



GWM 100

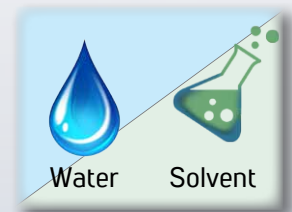


Floor stand (Optional)

Standard wall mounting shown

ACCESSORIES INCLUDED

- ✓ Air whip line
- ✓ Exhaust for solvent fume extraction (2)
- ✓ Wall brackets
- ✓ Fluid containers of 2L (4)
- ✓ Instruction manual



- Warranty
- Safety

- Operation
- Service Parts

- Accessory Information
- Registration Form

Part # 350100

CE $\text{\textcircled{Ex}}$ II 2G T6

INSTRUCTION MANUAL

2020-10-20



TABLE OF CONTENTS

	Page
SETTING THE MACHINE UP	3
MAINTENANCE SCHEDULE	3
FLUID CONTAINER INSTALLATION	4
EXHAUST INSTALLATION.....	4
WALL MOUNTING INSTALLATION	5
OPTIONAL ACCESSORIES.....	6
USING THE MACHINE.....	7
HEALTH & SAFETY DATA SHEET	8
OPTIONAL ACCESSORIES.....	9
AIR PIPING CIRCUIT.....	9
TECHNICAL SPECIFICATIONS	9
PARTS AVAILABLE.....	9
EXPLODED VIEW & PARTS LIST	10
ISTPAINT LIMITED WARRANTY	11
WARRANTY REGISTRATION	12



SETTING THE MACHINE UP

PLEASE NOTE

**It is advised that an air, dirt and water trap filter is fitted part as shown on the page 9
This will protect the valves and cylinder from dirt and water contamination.**

We recommend regular changing of the solvent to ensure absolute cleanliness of your spray gun.

1. Position machine in a well ventilated area. The extraction outlet will accept 3" (75mm) hose and should be connected to an existing system or taken to the external part of a building and vented via the atmosphere. Hose and a range of adaptors are available direct from ISTpaint.
2. Connect the machine to the air supply. All air connections are located on the right hand side of the machine when viewed from the front.
3. Connect ground wire on rear of machine to suitable earthing point.

Air supply pressure : 40 to 90 psi, thread size: 1/4" NPT

MAINTENANCE SCHEDULE

Frequency	DAILY OPERATION & MAINTENANCE
Action	<ul style="list-style-type: none"> ○ Clean the suction filter every time you replace the solvent drums. ○ Check the dirt and water trap and empty when necessary. DO NOT ALLOW THIS TO FILL AND BLOCK

Frequency	EVERY MONTH
Action	<ul style="list-style-type: none"> ○ Add two drops of air tool oil into the air side of the two pumps inside the machine.

Frequency	EVERY 6 MONTHS
Action	<ul style="list-style-type: none"> ○ Change the blue filter cartridge (inline filter) and O-Ring gasket or sooner depending on contamination.



FLUID CONTAINER INSTALLATION

WARNING : DO NOT SMOKE OR USE OPEN FLAME NEAR CABINET.



1. There are 4 containers inside the base of the machine. There are 2 containers with large holes in the lid (waste fluid) and two containers with small holes in the lid (clean fluid).
2. Take the two containers with small holes and fill with clean solvent or clean water.
3. Position the clean fluid containers under the fluid hood and push the small 1/4" nylon hose attached to the fluid hood inside the fluid container.
4. Now position the waste containers under each hood. Feed each piece of convoluted hose into each container.

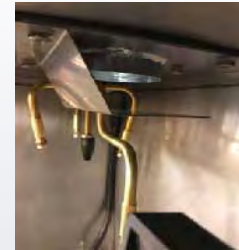
EXHAUST INSTALLATION

Follow this procedure to convert the waterborne station into a solvent station

Jets can be twisted toward the back of the tank or front for fitting and removal

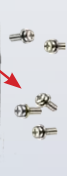
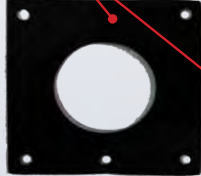
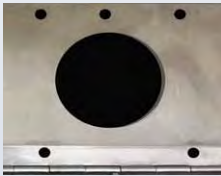


Mount exhaust as shown in this picture, dome nuts and spring washers on the top of the tank.



Inside the tank fit the neoprene gasket in between the exhaust and tank and fit the baffle last.

Gasket & hardware
Fig. 1



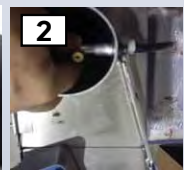
Exhaust pipe



1. Fix the exhaust pipe on top of the cabinet using supplied hardware and gasket (**Fig.1**).

Fig. 2

Fume extraction air jet

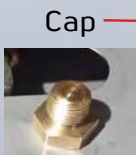


2. Insert the ventilation fume extraction air jet inside the exhaust pipe (**Fig.2-1**) and fix it to the air hose using a flat wrench (**Fig.2-2**) until it is firmly screwed in place (**Fig.2-3**).

Air hose

Solvent Cleaning Setup

By default, the cleaner is set for solvent cleaning. The ventilation fume extraction system will activate upon opening of the lid to prevent users from being exposed to solvent fumes. (**Fig.2-3**)



Cap



Waterborne Cleaning Setup

To set up the cleaner for waterborne cleaning, simply replace the air jet nozzle with the cap. This will disable the ventilation system and reduce power consumption and maintenance costs of the cleaner.



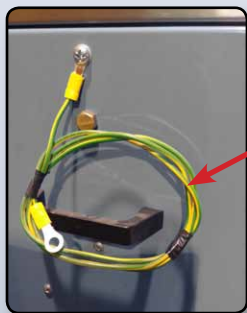
WALL MOUNTING INSTALLATION



1. Fix one mounting bracket to the wall with the bolt notches facing up. This bracket will be your upper bracket.
2. Fix all four mounting bolts to the back of the machine in the threaded holes. Do not tighten.
3. Hang the machine on the top bracket by inserting the top bolts in the bracket.
4. Take the second bracket and position it in place by fixing it to the bottom bolts, with the bolt notches facing up.
5. Mark the bracket position.
6. Remove the unit from the wall and drill the holes and fix the second bracket.
7. Once the two brackets are firmly fixed in the wall, hang the machine on all four bolt notches, and tighten the bolts to secure the unit.
8. Fix the ground wire to an earth point.
9. Our extraction exhaust is 3" in diameter. Attach suitable flexible/ or rigid hosing to the exhaust and ensure the exhaust then vents to atmosphere, this can be through existing extraction systems.

For Bench Mounting

Use the feet / bolts in the bottom of the machine to connect it to the bench.



Earth wire



Flexible hosing

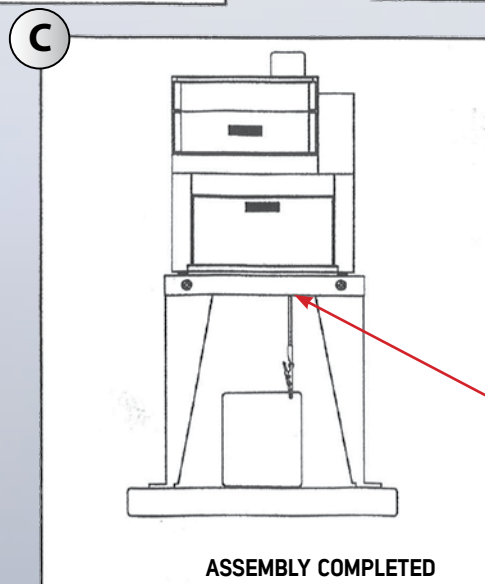
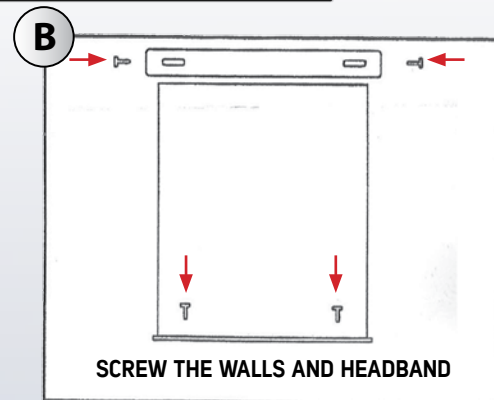
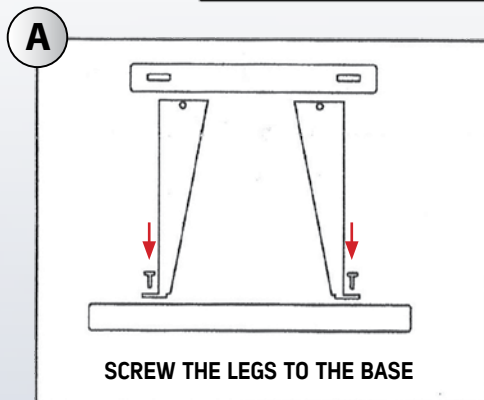
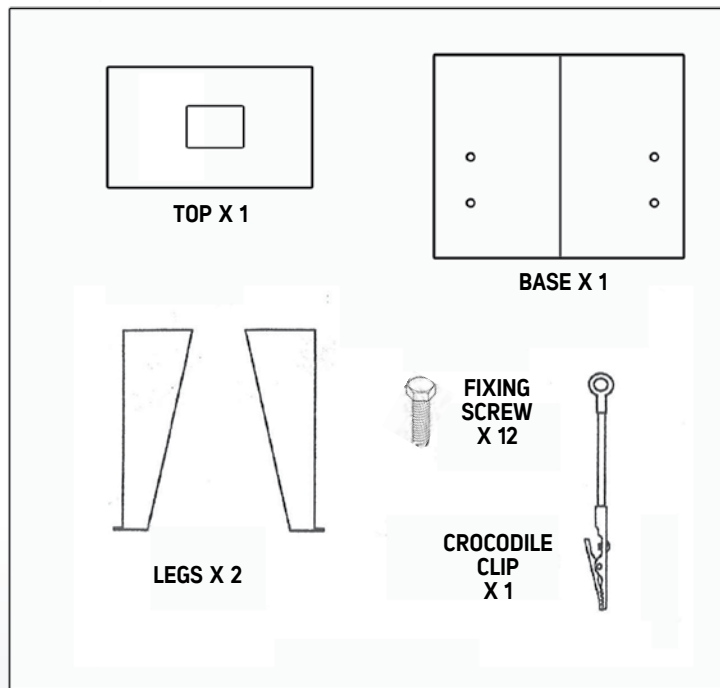
PLEASE NOTE

Ensure the machine is positioned in a well-ventilated area. If using the solvent option, ensure that there is suitable ventilation nearby to connect the exhaust system (The machine will self-vent to a maximum distance of 16,4').



OPTIONAL ACCESSORIES

WHAT'S INCLUDED :



SCREW THE CABLE LUG OF THE CROCODILE CLAMP



USING THE MACHINE

PLEASE NOTE

For best results spray guns should be cleaned as soon as possible after use.



Air rinse/Drying

FOR BEST CLEANING RESULTS PLEASE FOLLOW THESE STEPS.

1. Disconnect the spray gun from the airline.
2. Remove the paint cup.

Air Rinse

3. Position the spray gun over the air purge nozzle.
4. Turn on the air rinse lever pulling the trigger at the same time.
5. Blow air through the spray gun until all paint is removed.



Fluid rinse

Fluid Rinse

6. Connect the spray gun to the whip line.
7. Position the spray gun under the larger fluid nozzle.
8. Ensure the air cap is pushed into the brush, to reduce misting.
9. Turn on the rinse lever whilst pulling the trigger on the spray gun.
10. Rinse the fluid through the spray gun for 20-30 seconds or until the fluid runs clear.
11. The brush can then be used to clean the air cap.

Air Drying

12. Disconnect the spray gun from the whip line and repeat steps 3-5 to dry the gun.



Whip line



Air purge nozzle

Fluid nozzle

Brush

Inside view (One side only)



HEALTH & SAFETY DATA SHEET

PRODUCT NAME USES	Removal of paint from paint spray guns, cups and hoses.
GENERAL PRECAUTIONS	<p>Before operating this spray gun cleaner, operators must be familiar with the correct operating procedures as detailed in the manufacturer's Instruction Manual.</p> <p>Do not tamper with the safety lid switch, which prevents the unit operating in the cleaning mode when the lid is open.</p> <p>Close drain valve and close lid when the unit is not in use. All solvent should be drained from the cleaning tank before closing the drain valve.</p> <p>Inspect solvent storage compartment daily to ensure there is no leaks from the solvent containers.</p> <p>Replace solvent filter pad frequently (bimonthly replacement of the filter pad is recommended)</p> <p>Always disconnect the air source before performing maintenance tasks.</p>
FIRE HAZARDS	<p>Do not smoke or use other ignition sources near the cabinet. E.g. no hot work, such as welding.</p>
HEALTH HAZARDS	<p>The cleaning solvent used will contain substances hazardous to health, typically acetone, methanol, white spirit, xylene and toluene. Air monitoring carried out with a recommended cleaning thinner has shown that concentrations do not exceed exposure limits. Levels were less than 50% of the mixed short-term exposure limit when the lid was open for removal of the spray gun, cups and hoses and just 6% of the limit during the cleaning cycle. Substances in the solvent however can be absorbed through the skin, see personal protection equipment.</p>
VENTILATION	<p>A local exhaust ventilation system as supplied with the machines, should be installed so that vapours are safely vented to atmosphere away from windows and other air inlets.</p>
PERSONAL PROTECTION EQUIPMENT	<p>Suitable gloves must be worn when replacing and removing spray guns from the cleaning machine. Most glove manufacturers recommend Nitrile gloves for the solvent xylene and toluene, which can be absorbed through the skin.</p>
WASTE DISPOSAL	<p>Waste solvent must be removed by a registered carrier to a disposal or recovery facility licensed to receive waste solvent.</p>
EMERGENCY ACTION	<p>FIRE In case of fire, use a form of dry powder extinguishing agent. Cool solvent drums exposed to fire with water spray.</p> <p>FIRST AID Eye contact with solvent- irrigate with clean water. Skin contact with solvent remove contaminated clothing, wash skin thoroughly with soap and water. Excess inhalation of solvent vapours – Remove to fresh air, seek medical attention</p> <p>Accidental Ingestion – Do not induce vomiting, seek medical attention.</p> <p>SPILLAGE OF SOLVENT Contain and collect with non-combustible materials E.g. sand and earth. Do not allow to enter drains. Exclude sources of ignition. Ventilate area.</p>

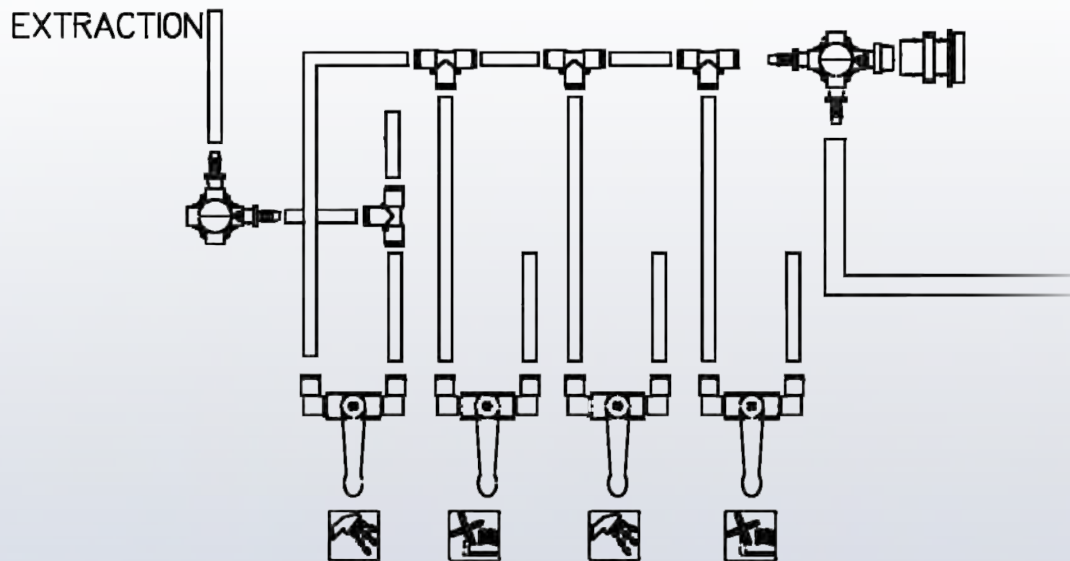


OPTIONAL ACCESSORIES

FLOOR STAND



AIR PIPING CIRCUIT



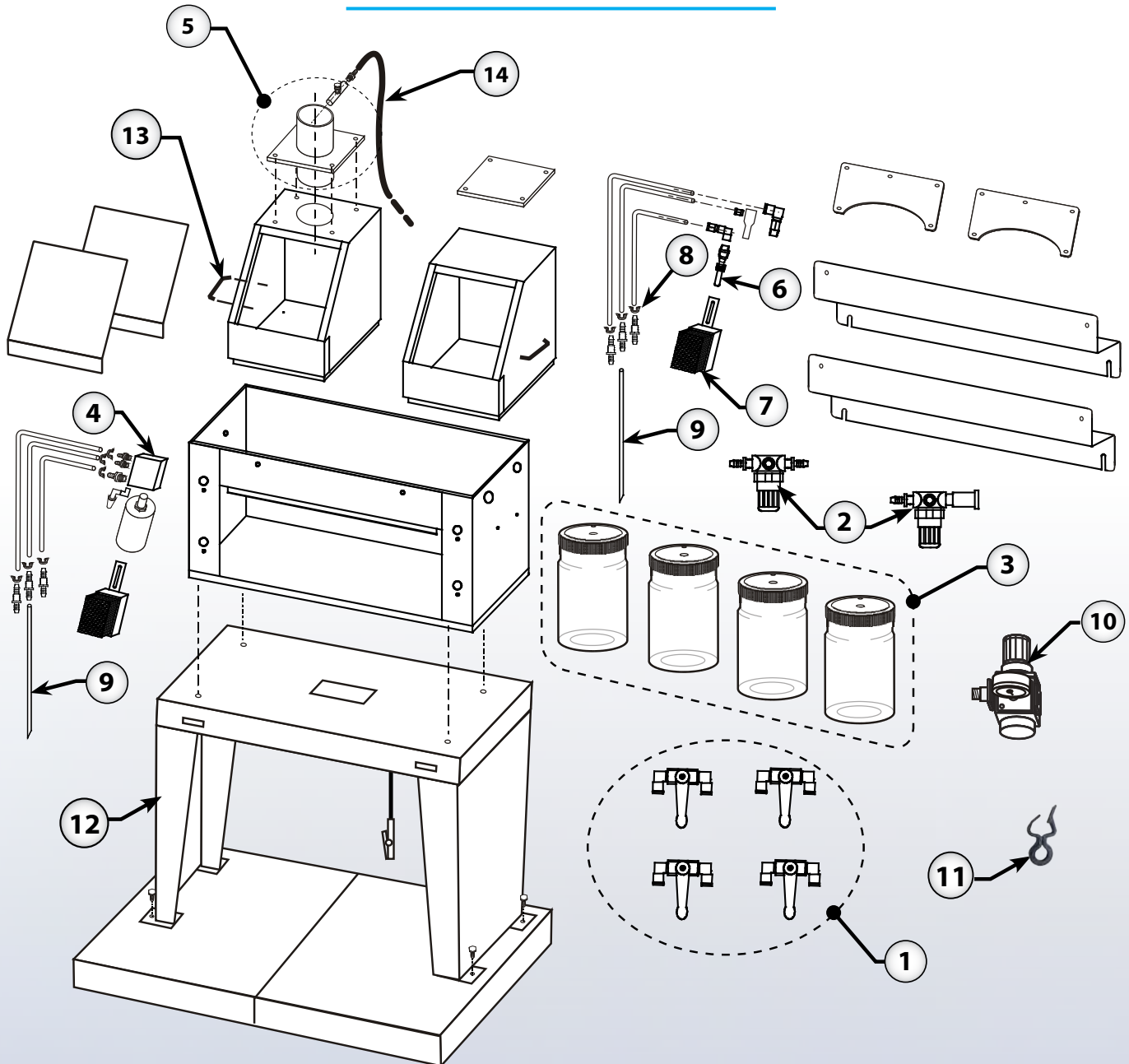
TECHNICAL SPECIFICATIONS

Washing Station(s)	2 Manual
Washing Station Capacity	1 Paint Gun / 2 Cups
Dimensions (H x W x D)	*34" X 19" X 12"
Weight	42 lb
Air input	40 / 90 psi
Air consumption	< 2 cfm
Air input connection	1/4" NPT
Warranty Parts	2 years
Product number	350100

**58" with floor stand*



EXPLODED VIEW & PARTS LIST



ID	# Pièce	Description
1	324830	ON/OFF Valve
2	324826	50 psi Pressure Regulator (for Blow Gun)
3	NPN	2 L Container
4	NPN	Wash Block
5	324824	Fume Extractor
6	NPN	Wash Nozzle
7	NPN	Crimp Nylon Brush

ID	# Pièce	Description
8	NPN	Plastic Nylon Clip
9	NPN	Nylon Tube
10	324843aa	Gunwash Pressure Regulator & Gauge
11	324806	Nylon Trigger Clip
12	324836	Floor Stand (Optional)
13	324822	Black Door Handle
14	324835	8 mm Air Hose for Fume Extractor (sold by foot)



IST LIMITED WARRANTY

IST warrants all equipment led in this manual which is manufactured by IST and bearing its name, to be free from defects in material and workmanship on the date of sale by an authorized IST distributor to the original purchaser for use. Not with standing any special, extended or limited warranty published by IST will, for a period of TWENTY FOUR (24) months for parts from the date of sale, repair or replace any part of the equipment determined by IST to be defective. This warranty applies only when the equipment is installed, operated and maintained in accordance with IST's written recommendations.

This warranty does not cover, and IST shall not be liable for general wear and tear, or any malfunction, damage or wear caused by faulty installation, misapplication, abrasion, corrosion, inadequate or improper maintenance, negligence, accident, tampering, or substitution of non-IST component parts. Nor shall IST be liable for malfunction, damage or wear caused by the incompatibility with IST equipment with structures, accessories, equipment or materials not supplied by IST, or the improper design, manufacture, installation, operation or maintenance of structures, accessories, equipment or materials not supplied by IST.

This warranty is conditioned upon the prepaid return of the equipment claimed to be defective to an authorized IST distributor for verification of the claimed defect. If the claimed defect is verified, IST will repair or replace free of charge any defective parts. The equipment will be returned to the original purchaser, transportation prepaid. If the inspection of the equipment does not disclose any defect in material or workmanship, repairs will be made at a reasonable charge, which charges may include the costs of parts, labor, and transportation.

THIS WARRANTY IS EXCLUSIVE, AND IS IN LIEU OF ANY OTHER WARRANTIES, EXPRESSED OR IMPLIED, INCLUDING BUT NOT LIMITED TO WARRANTY OF MERCHANTABILITY OR WARRANTY OF FITNESS FOR A PARTICULAR PURPOSE.

IST's sole obligation and the buyer's sole remedy for any breach of warranty shall be as set forth above. The buyer agrees that no other remedy (including, but not limited to, incidental or consequential damages for lost profits, lost sales, injury to person or property, or any other incidental or consequential loss) shall be available. Any action for breach of warranty must be brought forward within one (1) year of the date of sale.

IST MAKES NO WARRANTY, AND DISCLAIMS ALL IMPLIED WARRANTIES OF MERCHANTABILITY AND FITNESS FOR A PARTICULAR PURPOSE, IN CONNECTION WITH ACCESSORIES, EQUIPMENT, MATERIALS OR COMPONENTS SOLD BUT NOT MANUFACTURED BY IST. These items sold, but not manufactured by IST (such as electric motors, switches, hose, etc.), are subject to the warranty, if any, of their manufacturer. IST will provide the purchaser with reasonable assistance in making any claim for breach of these warranties.

LIMITATION OF LIABILITY

In no event will IST be liable for indirect, incidental, special or consequential damages resulting from IST supplying equipment hereunder, or the furnishing, performance, or use of any products or other goods sold hereto, whether due to a breach of contract, breach of warranty, the negligence of IST, or otherwise.

Report all accidents or "near misses" which involve IST products to :
- Technical Assistance

The following items are not covered under the IST warranty policy :
- Parts or chassis replacement due to normal wears.

Report all accidents or negligence involving IST products to our Service Department :

1 877 629-8202



WARRANTY REGISTRATION

ISTpaint would like to thank you for your recent purchase of our product line. Please complete the card below and either mail or fax it to our office so that we may start the warranty of your product and keep you up to date on the EPA regulations by fax. Again, thank you for your purchase and if you have any suggestions or comments, please feel free to contact our office.

COMPANY NAME : _____

ADDRESS : _____

CITY : _____ STATE/PROV. : _____

COUNTRY : _____ POSTAL/ZIP CODE : _____

CONTACT : _____

TEL. NUMBER: _____ - _____ FAX NUMBER: _____ - _____

PURCHASE FROM: _____

DATE OF PURCHASE: |_|_| |_|_| |_|_|_|
 Month Day Year

SERIAL NUMBER: |_|_| - |_|_|_| - |_|_|_| MODEL NUMBER: |3|5|0|1|0|0|

TYPE OF FLUID USED : _____

Which factors most influenced your decision to purchase this ISTpaint unit ?

SUGGESTIONS ABOUT THE EQUIPMENT:

IMPORTANT! Please complete and return within 30 days after purchase to activate the warranty.

PLEASE SEND THE COMPLETED FORM VIA EMAIL OR FAX TO :
INFO@ISTSURFACE.COM OR 450-963-5122

