



GWMA 600 TWIN



ACCESSORIES INCLUDED

- ✓ Air blow gun (2)
- ✓ Adapter tubes and fitters
- ✓ Cleaning nozzles
- ✓ Trigger holding clamp (2)
- ✓ Exhaust for solvent fume extraction (2)
- ✓ Blue Filter kit
- ✓ Instruction Manual



- Warranty
- Safety

- Operation
- Service Parts

- Accessory Information
- Registration Form

Complete cleaner # 350600

CE $\text{\textcircled{Ex}}$ II 2G T6

INSTRUCTION MANUAL

2020-10-20



TABLE OF CONTENTS

	Page
SETTING THE MACHINE UP	3
MAINTENANCE SCHEDULE	3
INSTALLATION OF CONTAINERS	4
EXHAUST INSTALLATION	5
AIR EXHAUST INSTALLATION	5
AIR INLET CONNECTION	5
USING THE MACHINE : OPERATION	6
OPERATING THE CLEANER	7
AUTOMATIC WASH.....	7
MANUAL WASH - USED SOLVENT/WATER.....	7
RINSING WITH CLEAN SOLVENT/WATER.....	7
AUTO WASH - GRAVITY SPRAY GUN	8
AUTO WASH - SUCTION SPRAY GUN.....	9
MANUAL WASH	10
BLUE FILTER.....	11
HEALTH & SAFETY DATA SHEET	12
AIR CIRCUIT PIPING, TECHNICAL SPECIFICATION	13
EXPLODED VIEW & PARTS LIST	14
IST LIMITED WARRANTY	15
WARRANTY REGISTRATION	16



SETTING THE MACHINE UP

PLEASE NOTE

We advise using an air, dirt and water trap filter at the air inlet at the cleaner. This will protect the valves and cylinder from dirt and water contamination.

It is possible to obtain 100/150 gun washes from a 5 gal drum of solvent but results may vary upon how much paint material is left in your spray gun cup. We recommend regular changing of the solvent to ensure absolute cleanliness of your spray gun.

- Position machine in a well ventilated area. The extraction outlet will accept 3” hose and should be connected to an existing system or taken to the external part of a building and vented via the atmosphere.
- Connect the machine to the air supply. All air connections are located on the right hand side of the machine when viewed from the front.
- Connect earth wire on rear of machine to suitable earthing point.

Air Supply Pressure: 76 to 100 psi. Thread size: 1/4” NPT

MAINTENANCE SCHEDULE

Frequency	DAILY OPERATION & MAINTENANCE
Action	<ul style="list-style-type: none"> ○ Clean the suction filter every time you replace the solvent drums. ○ Check the dirt and water trap and empty when necessary. DO NOT ALLOW THIS TO FILL AND BLOCK

Frequency	EVERY MONTH
Action	<ul style="list-style-type: none"> ○ Add two drops of air tool oil into the air side of the two pumps inside the machine.

Frequency	EVERY 6 MONTHS
Action	<ul style="list-style-type: none"> ○ Change the blue filter cartridge and O-Ring gasket (inline filter) or sooner depending on contamination.



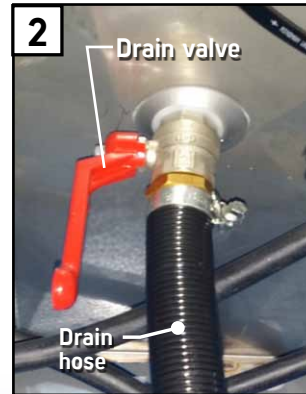
INSTALLATION OF CONTAINERS

WARNING
DO NOT SMOKE OR USE OPEN FLAME NEAR CABINET.

In order to use the clean rinse feature, you will need one 5 gal drum and one 1.3 gal empty container.

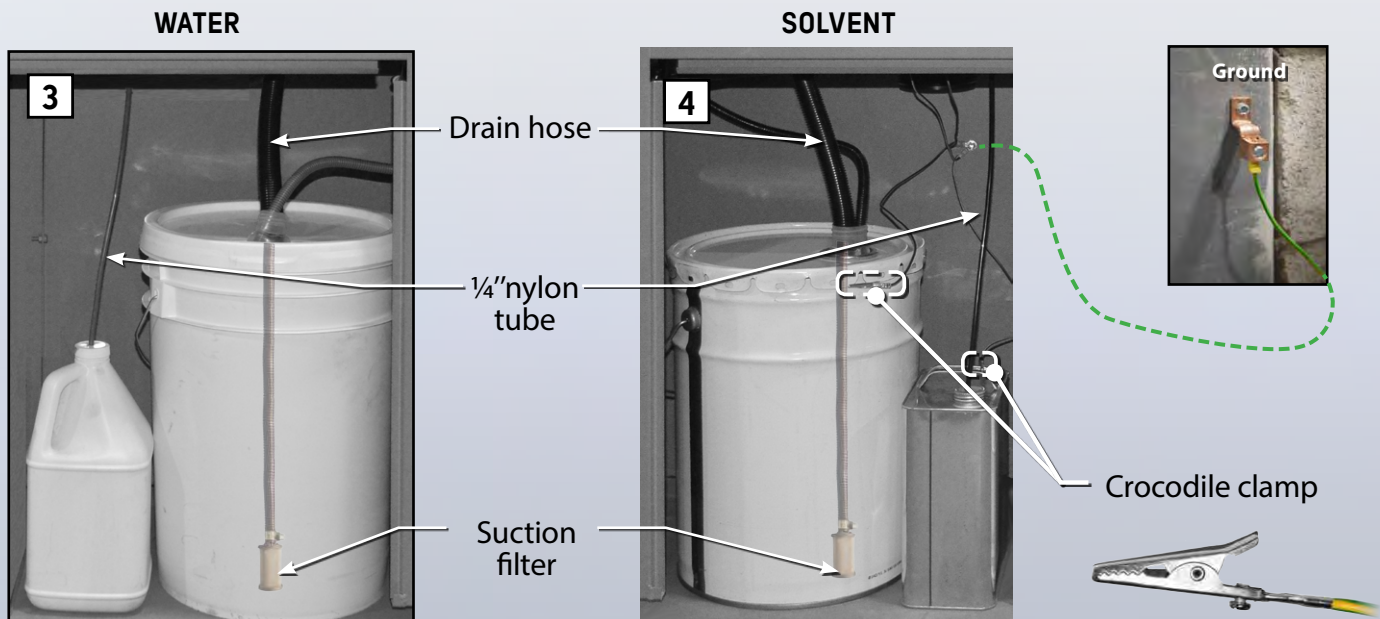


1. Fill a 5 gal drum with clean solvent or water, For waterborne cleaning, add 1 x 3.4 oz bottle of water-based cleaner in the drum
2. Transfer 1.3 gal of cleaning fluid from the drum into the 1.3 gal container [1]



3. Locate the drain valve lever under the machine and turn lever to vertical position [2]

4. Insert hose with suction filter into the 5 gal drum and enter drain tube [3-4].
5. Push the 5 gal drum under machine aligning filler neck with bottom part of flexible hose [3-4].
6. Place the full 1.3 gal container under the centre of the machine next to the 5 gal drum and insert the black 1/4" nylon tube [3-4].
7. For solvent-based cleaning, installation of ground wire is required. Connect ground wires equipped with crocodile clamp located inside the machine to any metal solvent containers if used. The machine must also be grounded on a metal structure using the green ground wire located at the back as shown on the picture below [3].





EXHAUST INSTALLATION

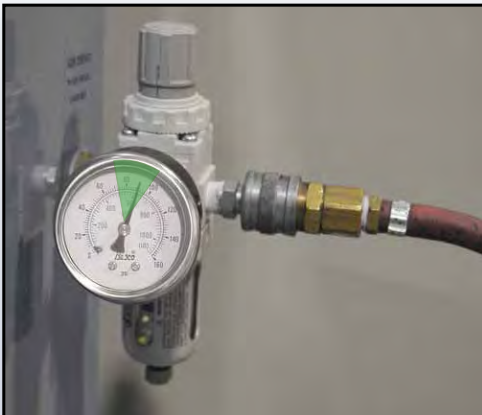
AIR EXHAUST INSTALLATION



Evacuate fume outside of the building or link the exhaust to the building air evacuation system using a 3" flexible aluminum duct.

No additional ventilation system required.

AIR INLET CONNECTION



We strongly recommend using a dirt / water trap and an air pressure regulator when using your GWMA600.

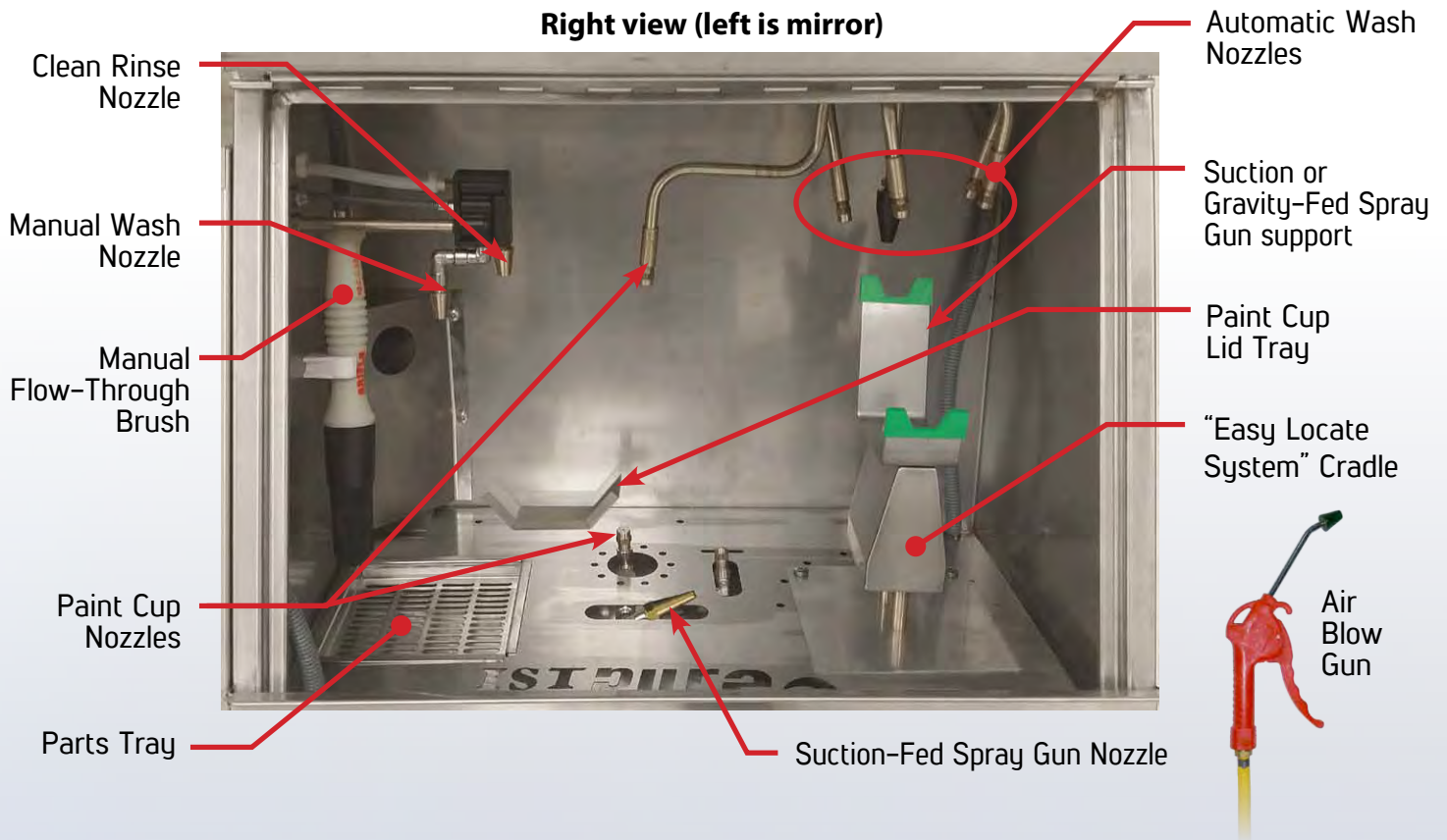
The pressure regulator and filter should be installed on the compressed air inlet of the cleaner as shown in the picture.

The air pressure should be set between **76 and 100 psi**.



USING THE MACHINE : OPERATION

For the most efficient clean, ensure the spray gun and cup are emptied from any residual paint prior to use the GWMA 600 cleaner. We recommend to keep a waste paint drum at the side of the machine to reclaim waste paint.



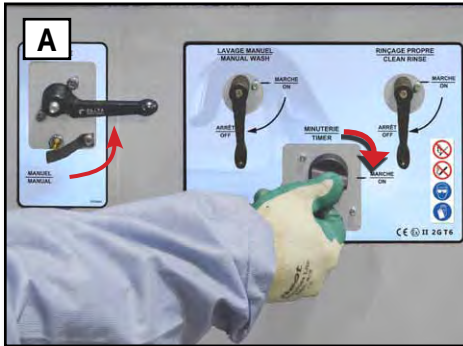
PLEASE NOTE

For best results spray guns should be cleaned as soon as possible after use.



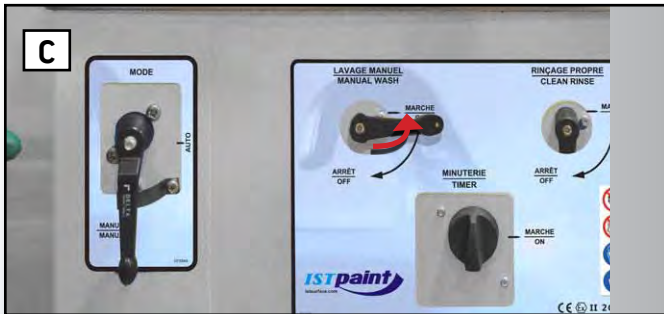
OPERATING THE CLEANER

AUTOMATIC WASH



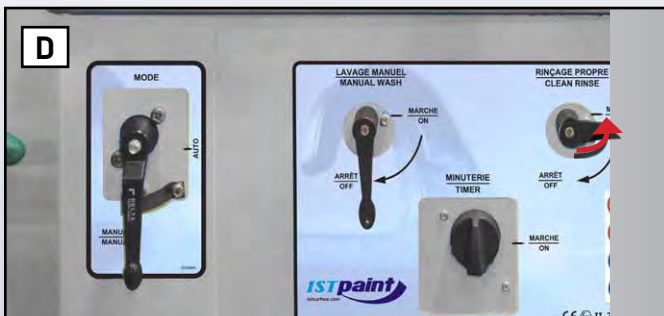
Close the lid, turn the wash MODE selection valve to AUTOMATIC and turn the timer knob clockwise to start the cycle (A). The cleaning process will stop automatically after 4 minutes. The lid of the cleaning station must be closed in order to deactivate the security system (B).

MANUAL WASH - USED SOLVENT/WATER



Turn the Wash Mode selection valve to Manual Wash and turn the Manual Wash valve to the horizontal position (C).

RINSING WITH CLEAN SOLVENT/WATER



Turn the Wash Mode selection valve to Manual Wash and turn the Clean Rinse valve to the horizontal position (D).



For an efficient cleaning, ensure the spray gun is well positioned under the cleaning nozzle (E).



AUTO WASH - GRAVITY SPRAY GUN

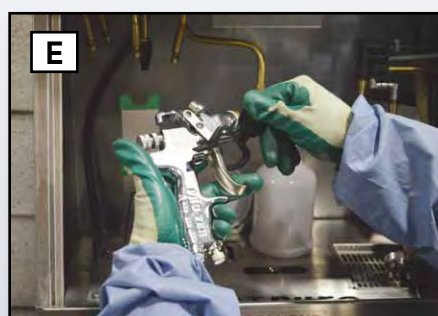


A prewash of the spray gun interior and exterior is strongly recommended prior to run an auto wash cycle. Refer to the manual wash process at page 10 of the manual.

1. Empty the paint cup and remove it from the spray gun (A).
2. Remove the air cap and disassemble small parts from the spray gun (B).
3. Blow air through the spray gun to remove any residual paint inside (C).



3. Place the paint cup on the nozzle and the lid on the tray as indicated on the picture (D)
4. Lock the trigger using the trigger clip (E).



5. Position the spray gun onto the "Easy Locate System" cradle. Push down the cradle with one hand (F), make sure the spray gun inlet is correctly positioned under the cleaning nozzle (G), and release the cradle to lock the spray gun in place (H).



6. Start AUTO WASH (see page 7, image A)



AUTO WASH - SUCTION SPRAY GUN



A prewash of the spray gun interior and exterior is strongly recommended prior to run an auto wash cycle. Refer to the manual wash process at page 10 of the manual.

1. Remove the cap of the inclined nozzle using an Allen key (A)
2. Fix the tapered nozzle on thread using a wrench or a flat spanner (B)



3. Remove the paint cup and empty residual paint in a waste container (C).
4. Remove the air cap and disassemble small parts from the spray gun (D)
5. Empty residual paint from spray gun in a waste container (E).



6. Lock the trigger using the trigger clip (F).
7. Mount the spray gun supply tube onto the tapered nozzle and the paint cup on the nozzle as indicated on the picture (G).

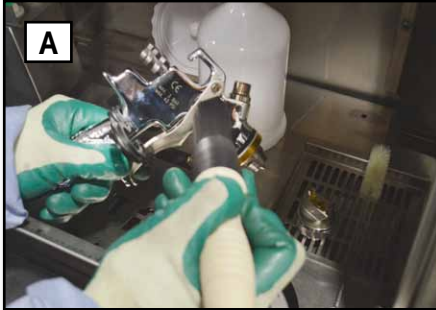


6. Start AUTO WASH (see page 7, image A)

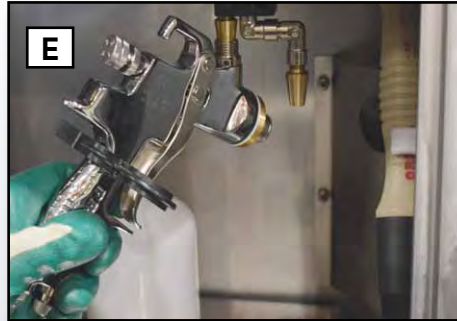


MANUAL WASH

1. Start MANUAL WASH (see page 7, image C)
2. Use the manual flow-through brush to clean the surface of the spray gun (A), the paint cup (B) and other disassembled parts (C).



3. Position the spray gun under the lower tap for cleaning with used solvent/water (D).
4. Start CLEAN RINSE (see page 7, image D) and position the spray gun under the higher tap for rinsing with clean water/solvent (E).



AIR BLOW DRY

Dry thoroughly the spray gun (A), the cup (B) and other disassembled parts (C) using the air blow gun.





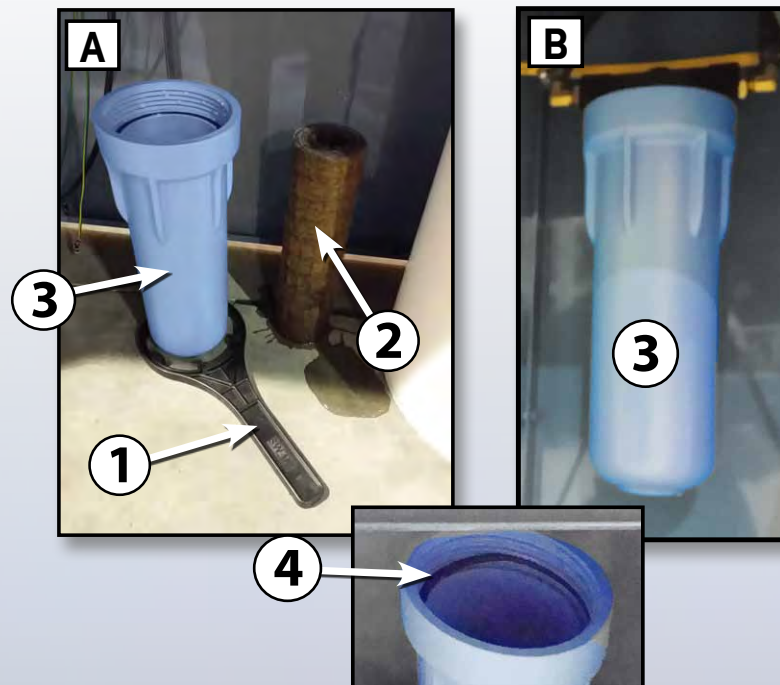
BLUE FILTER

« BLUE FILTER » FILTRATION SYSTEM



The **inline filtration system "Blue Filter"** enhances the cleaning performance of the washer, increases its life span, lower its maintenance, and reduces wastes by filtering out paint solids from washing fluid.

REPLACEMENT OF THE "BLUE FILTER" CARTRIDGE



- Take the cartridge key **(1)** and gently unscrew the blue cap off the filter.
- Remove the old cartridge and place a new one **(2)** it into the blue cap **(3)**.
- Ensure the O-ring seal **(4)** is properly in place and screw the blue cap on the thread and screw it firmly in place using the cartridge key.
- The cartridge **(3)** must be in place as shown on the picture **B**.

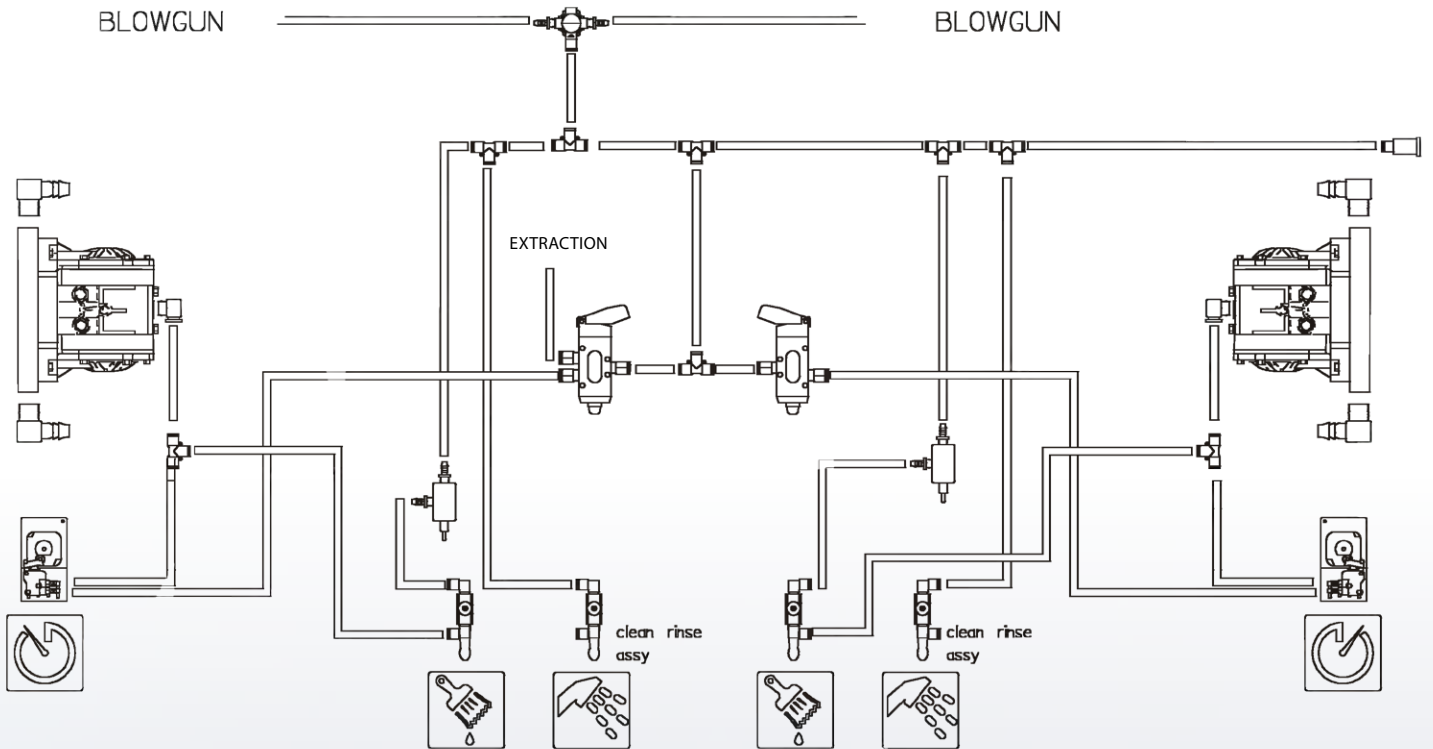


HEALTH & SAFETY DATA SHEET (HSDS)

PRODUCT NAME USES	Removal of paint from paint spray guns, cups and hoses.
GENERAL PRECAUTIONS	<p>Before operating this spray gun washer, operators must be familiar with the correct operating procedures as detailed in the manufacturer's Instruction Manual.</p> <p>Do not tamper with the safety lid switch, which prevents the unit operating in the cleaning mode when the lid is open.</p> <p>Close drain valve and close lid when the unit is not in use. All solvent should be drained from the cleaning tank before closing the drain valve.</p> <p>Inspect solvent storage compartment daily to ensure there is no leaks from the solvent containers.</p> <p>Replace solvent filter pad frequently (bimonthly replacement of the filter pad is recommended)</p> <p>Always disconnect the air source before performing maintenance tasks.</p>
FIRE HAZARDS	<p>Do not smoke or use other ignition sources near the cabinet. E.g. no hot work, such as welding.</p>
HEALTH HAZARDS	<p>The cleaning solvent used will contain substances hazardous to health, typically acetone, methanol, white spirit, xylene and toluene. Air monitoring carried out with a recommended cleaning thinner has shown that concentrations do not exceed exposure limits. Levels were less than 50% of the mixed short-term exposure limit when the lid was open for removal of the spray gun, cups and hoses and just 6% of the limit during the cleaning cycle. Substances in the solvent however can be absorbed through the skin, see personal protection equipment.</p>
VENTILATION	<p>A local exhaust ventilation system as supplied with the machines, should be installed so that vapours are safely vented to atmosphere away from windows and other air inlets.</p>
PERSONAL PROTECTION EQUIPMENT	<p>Suitable gloves must be worn when replacing and removing spray guns from the cleaning machine. Most glove manufacturers recommend Nitrile gloves for the solvent xylene and toluene, which can be absorbed through the skin.</p>
WASTE DISPOSAL	<p>Waste solvent must be removed by a registered carrier to a disposal or recovery facility licensed to receive waste solvent.</p>
EMERGENCY ACTION	<p>FIRE In case of fire, use a form of dry powder extinguishing agent. Cool solvent drums exposed to fire with water spray.</p> <p>FIRST AID Eye contact with solvent- irrigate with clean water. Skin contact with solvent remove contaminated clothing, wash skin thoroughly with soap and water. Excess inhalation of solvent vapours – Remove to fresh air, seek medical attention</p> <p>Accidental Ingestion – Do not induce vomiting, seek medical attention.</p> <p>SPILLAGE OF SOLVENT Contain and collect with non-combustible materials E.g. sand and earth. Do not allow to enter drains. Exclude sources of ignition. Ventilate area.</p>



AIR CIRCUIT PIPING

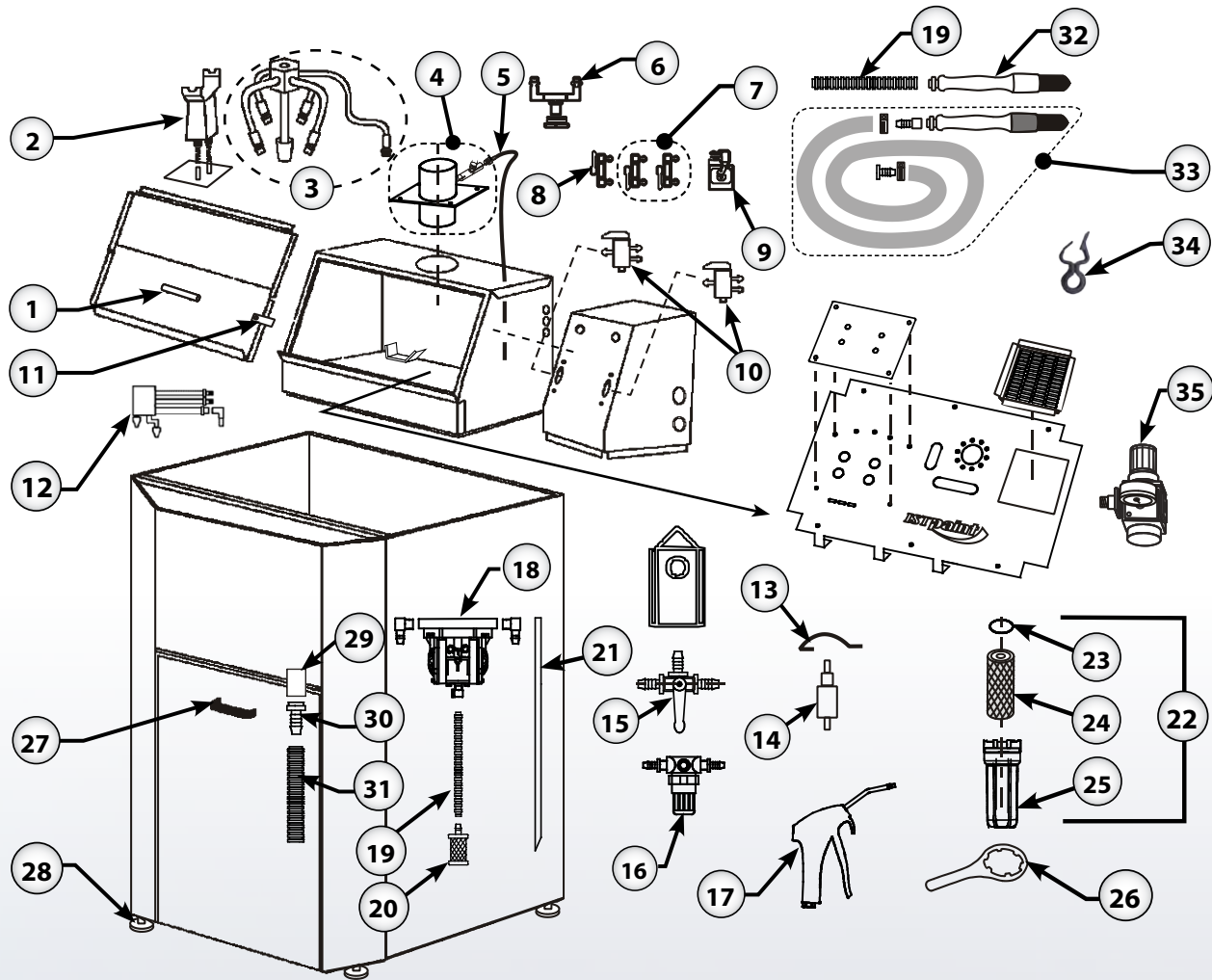


TECHNICAL SPECIFICATIONS

Washing Station(s)	2 Manual / 2 Automatic
Washing Station Capacity	2 Paint Guns / 2 Cups
Dimensions (H x W x D)	60" X 46" X 15 3/4"
Weight	154 lb
Air input	76/100 psi
Air input connection	1/4" NPT
Warranty Parts / Pump	2 years / 5 years
Product No.	350600



EXPLODED VIEW & PARTS LIST



ID	Part #	Description
1	NPN	Silver Door Handle
2	NPN	Gun Mounting Assembly
3	NPN	Spray Bar
4	324824	Fume Extractor
5	324835	8 mm Air Hose for Fume Extractor (sold by foot)
6	NPN	Pot Wash Lid Cap Assembly
7	324830	On/Off Valves
8	324827	Lid Safety Valve Assembly
9	324805	Timer Assembly
10	324825	Lid Lock Assembly
11	NPN	Plate for Safety Valve
12	324801	Manual Wash Block
13	NPN	Mode Valve Spring
14	324828	Front Air Valve Assembly
15	324831	Mode Valve Assembly
16	324826	50 psi Regulator (Blow Gun)
17	324821	Blow Gun with Tip

ID	# Pièce	Description
18	324800	Husky 205 Pump
19	324842	½" Corrugated Hose (sold by foot)
20	324803	Pail Suction Filter
21	NPN	Nylon Tube
22	324812	Blue Filter Kit with 2 Filter Cartridges
23	324840	O-Ring for Blue Filter 324812
24	324815	10 Micron Filter Cartridge (Pack of 5)
25	324834	Blue Filter Housing
26	324839	Clamping Tool for Blue Filter
27	324822	Black Door Handle
28	324838	48 mm Self Leveling Feet
29	NPN	½" FF Adaptor
30	NPN	½" BSP Hose Tail
31	324817	1" Corrugated Hose for Drain (sold by foot)
32	324614	Flow Through Brush
33	324611	Heavy-Duty Brush Upgrade Kit (includes brush, hose, and couplings)
34	324806	Trigger Clip (Pack of 5)
35	324843	Gunwash Pressure Regulator & Gauge



IST LIMITED WARRANTY

IST warrants all equipment led in this manual which is manufactured by IST and bearing its name, to be free from defects in material and workmanship on the date of sale by an authorized IST distributor to the original purchaser for use. Notwithstanding any special, extended or limited warranty published by IST will, for a period of TWENTY (24) months from the date of sale, and SIXTY (60) months from the date of sale for the pump to repair or replace any part of the equipment determined by IST to be defective. This warranty applies only when the equipment is installed, operated and maintained in accordance with IST's written recommendations.

This warranty does not cover, and IST shall not be liable for general wear and tear, or any malfunction, damage or wear caused by faulty installation, misapplication, abrasion, corrosion, inadequate or improper maintenance, negligence, accident, tampering, or substitution of non-IST component parts. Nor shall IST be liable for malfunction, damage or wear caused by the incompatibility with IST equipment with structures, accessories, equipment or materials not supplied by IST, or the improper design, manufacture, installation, operation or maintenance of structures, accessories, equipment or materials not supplied by IST.

This warranty is conditioned upon the prepaid return of the equipment claimed to be defective to an authorized IST distributor for verification of the claimed defect. If the claimed defect is verified, IST will repair or replace free of charge any defective parts. The equipment will be returned to the original purchaser, transportation prepaid. If the inspection of the equipment does not disclose any defect in material or workmanship, repairs will be made at a reasonable charge, which charges may include the costs of parts, labor, and transportation.

THIS WARRANTY IS EXCLUSIVE, AND IS IN LIEU OF ANY OTHER WARRANTIES, EXPRESSED OR IMPLIED, INCLUDING BUT NOT LIMITED TO WARRANTY OF MERCHANTABILITY OR WARRANTY OF FITNESS FOR A PARTICULAR PURPOSE.

IST's sole obligation and the buyer's sole remedy for any breach of warranty shall be as set forth above. The buyer agrees that no other remedy (including, but not limited to, incidental or consequential damages for lost profits, lost sales, injury to person or property, or any other incidental or consequential loss) shall be available. Any action for breach of warranty must be brought forward within one (1) year of the date of sale.

IST MAKES NO WARRANTY, AND DISCLAIMS ALL IMPLIED WARRANTIES OF MERCHANTABILITY AND FITNESS FOR A PARTICULAR PURPOSE, IN CONNECTION WITH ACCESSORIES, EQUIPMENT, MATERIALS OR COMPONENTS SOLD BUT NOT MANUFACTURED BY IST. These items sold, but not manufactured by IST (such as electric motors, switches, hose, etc.), are subject to the warranty, if any, of their manufacturer. IST will provide the purchaser with reasonable assistance in making any claim for breach of these warranties.

LIMITATION OF LIABILITY

In no event will IST be liable for indirect, incidental, special or consequential damages resulting from IST supplying equipment hereunder, or the furnishing, performance, or use of any products or other goods sold hereto, whether due to a breach of contract, breach of warranty, the negligence of IST, or otherwise.

Report all accidents or "near misses" which involve IST products to :
- Technical Assistance

The following items are not covered under the IST warranty policy :
- Parts or chassis replacement due to normal wears.

Report all accidents or negligence involving IST products to our Service Department :

1 877 629-8202



WARRANTY REGISTRATION

ISTpaint would like to thank you for your recent purchase of our product line. Please complete the card below and either mail or fax it to our office so that we may start the warranty of your product and keep you up to date on the EPA regulations by fax. Again, thank you for your purchase and if you have any suggestions or comments, please feel free to contact our office.

COMPANY NAME : _____

ADDRESS : _____

CITY : _____ STATE/PROV. : _____

COUNTRY : _____ POSTAL/ZIP CODE : _____

CONTACT : _____

TEL. NUMBER: _____ FAX NUMBER: _____

PURCHASE FROM: _____

DATE OF PURCHASE: ____ ____ ____
 Month Day Year

SERIAL NUMBER: _____ MODEL NUMBER: |3|5|0|6|0|0|

TYPE OF FLUID USED: _____

Which factors most influenced your decision to purchase this ISTpaint unit?

SUGGESTIONS ABOUT THE EQUIPMENT:

IMPORTANT! Please complete and return within 30 days after purchase to activate the warranty.

PLEASE SEND THE COMPLETED FORM VIA EMAIL OR FAX TO :
INFO@ISTSURFACE.COM

