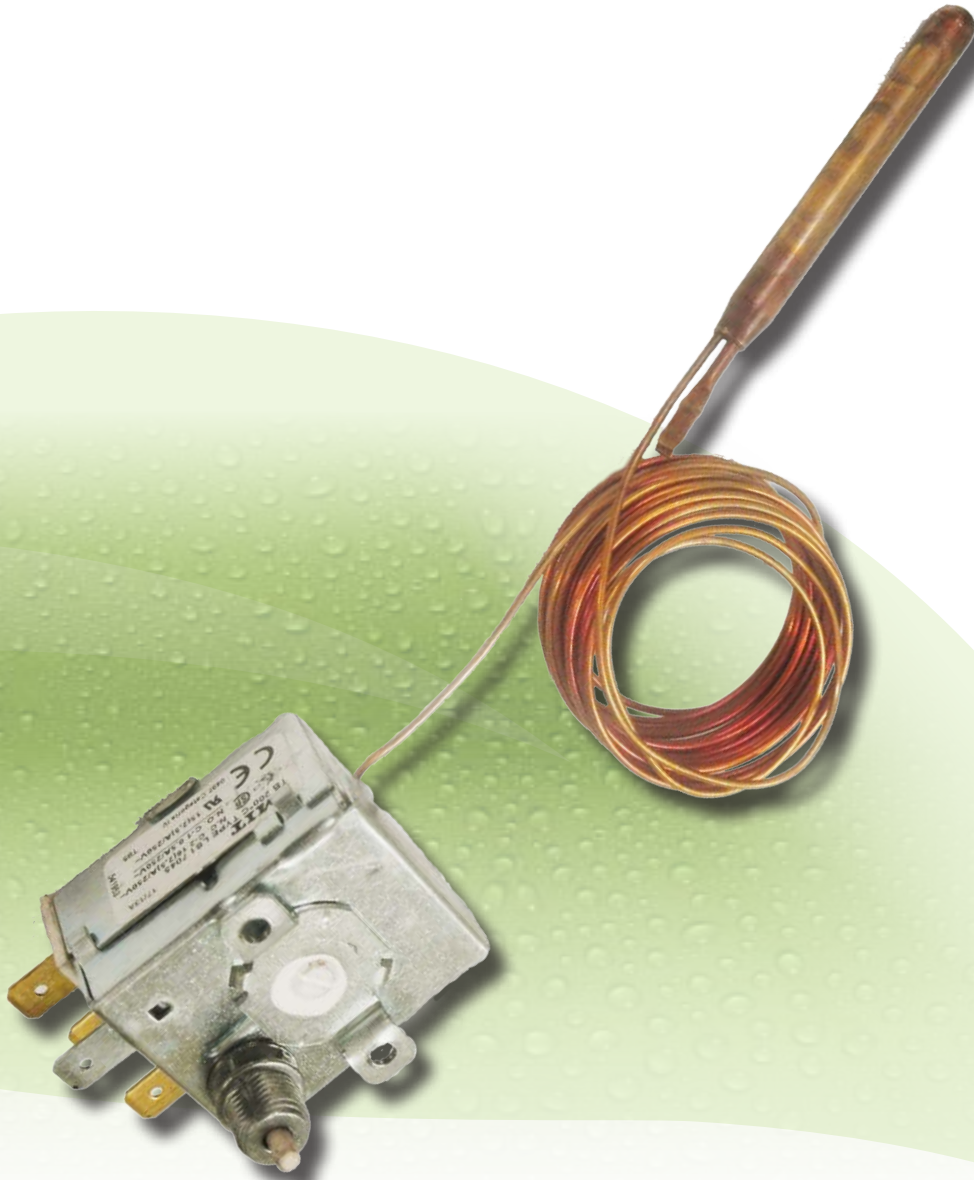


**SR30 & SR60**  
**NEW THERMOSTAT**



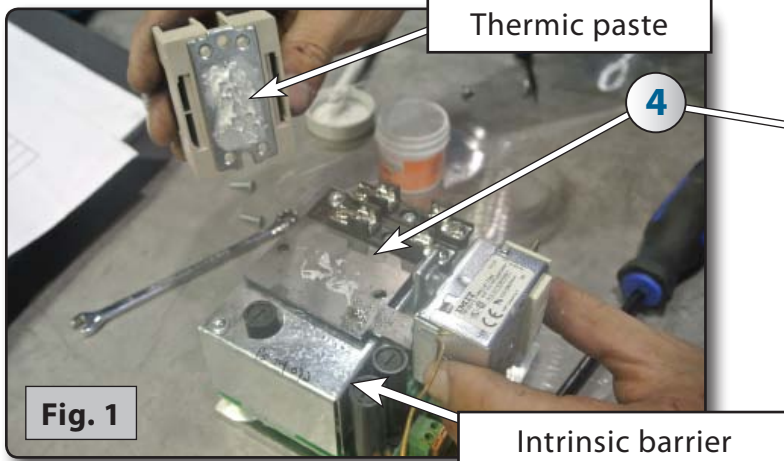
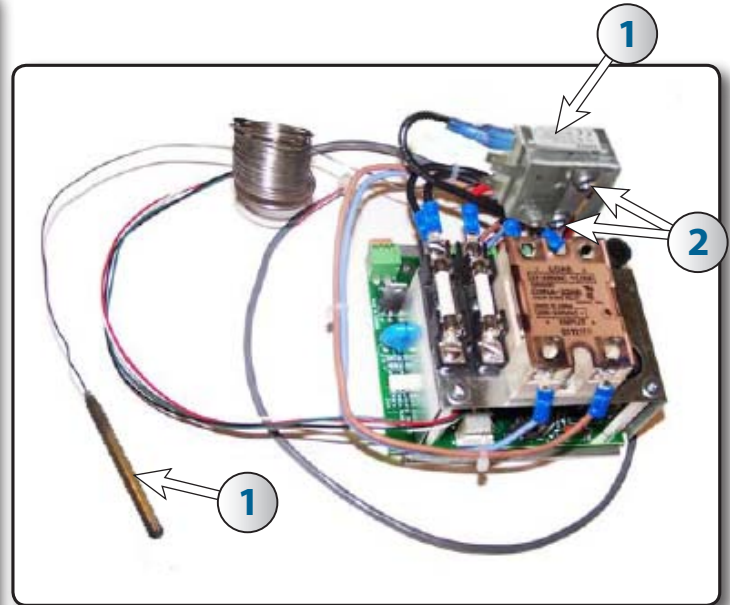
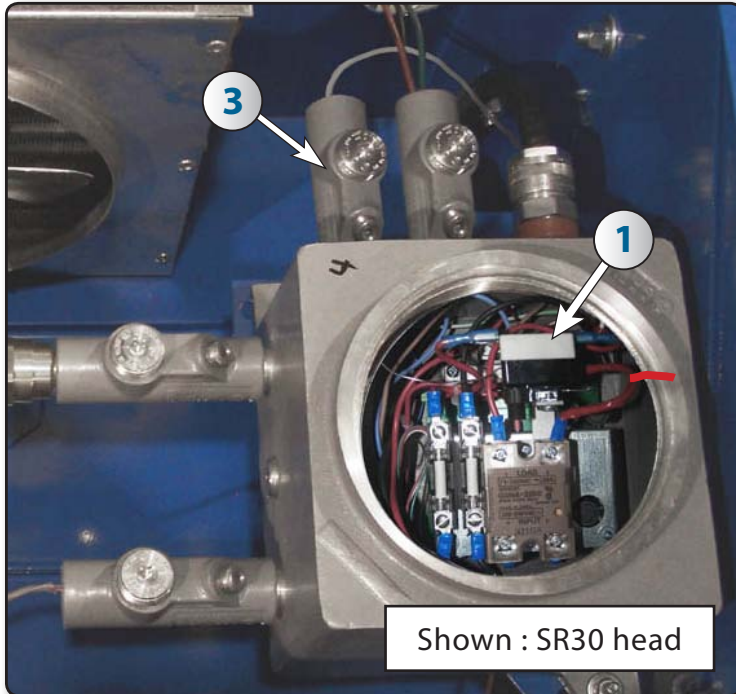
**INSTALLATION GUIDE**

For technical assistance call 1 877 629-8202

**1 - FIRST IS TO REMOVE OLD THERMOSTAT AND "EYS"**

**2 - INSTALLATION OF THERMOSTAT**

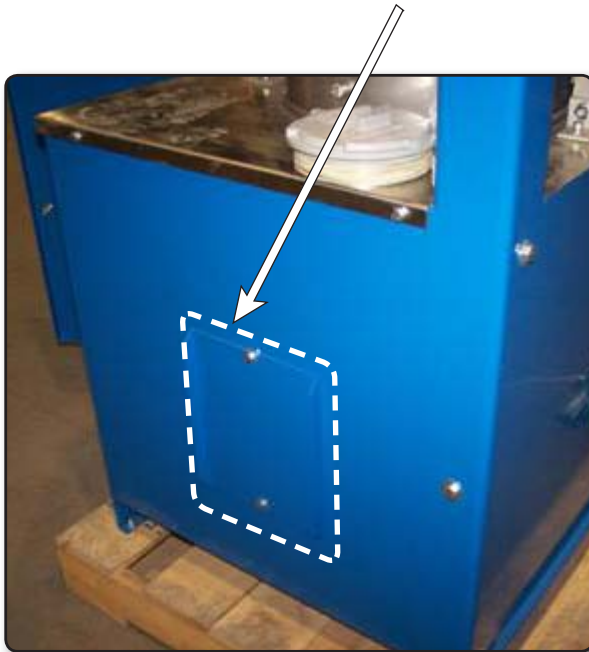
1. Install thermostat (1) with 2 screw (2) 10-24 x 1/2" on the plate (4) and fix them under the relay **Apply thermic paste under the relay before reinstalling it (fig 1) and rescrew them on the intrinsic barrier.**  
Install the new EYS. (3) See details page 6.



#	STOCK	DESCRIPTION	QTY
1	308005	NEW THERMOSTAT	1
2	NPN	SCREW 10-24 x 1/2"	2
3	322012	NEW EYS. CONNECTOR 1/2" MF	1
4	322020	RELAY PLATE	1

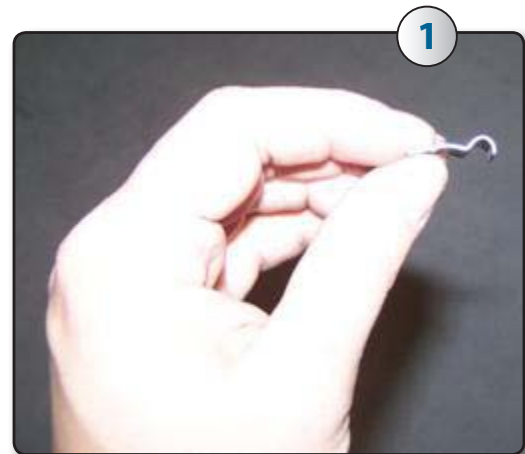
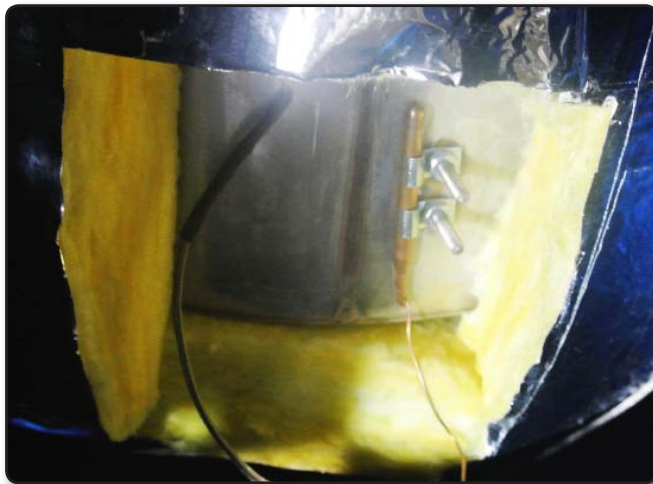


**3 - REMOVE SIDE DOOR**



**4 - FIX BULB TO SIDE OF BOILER**

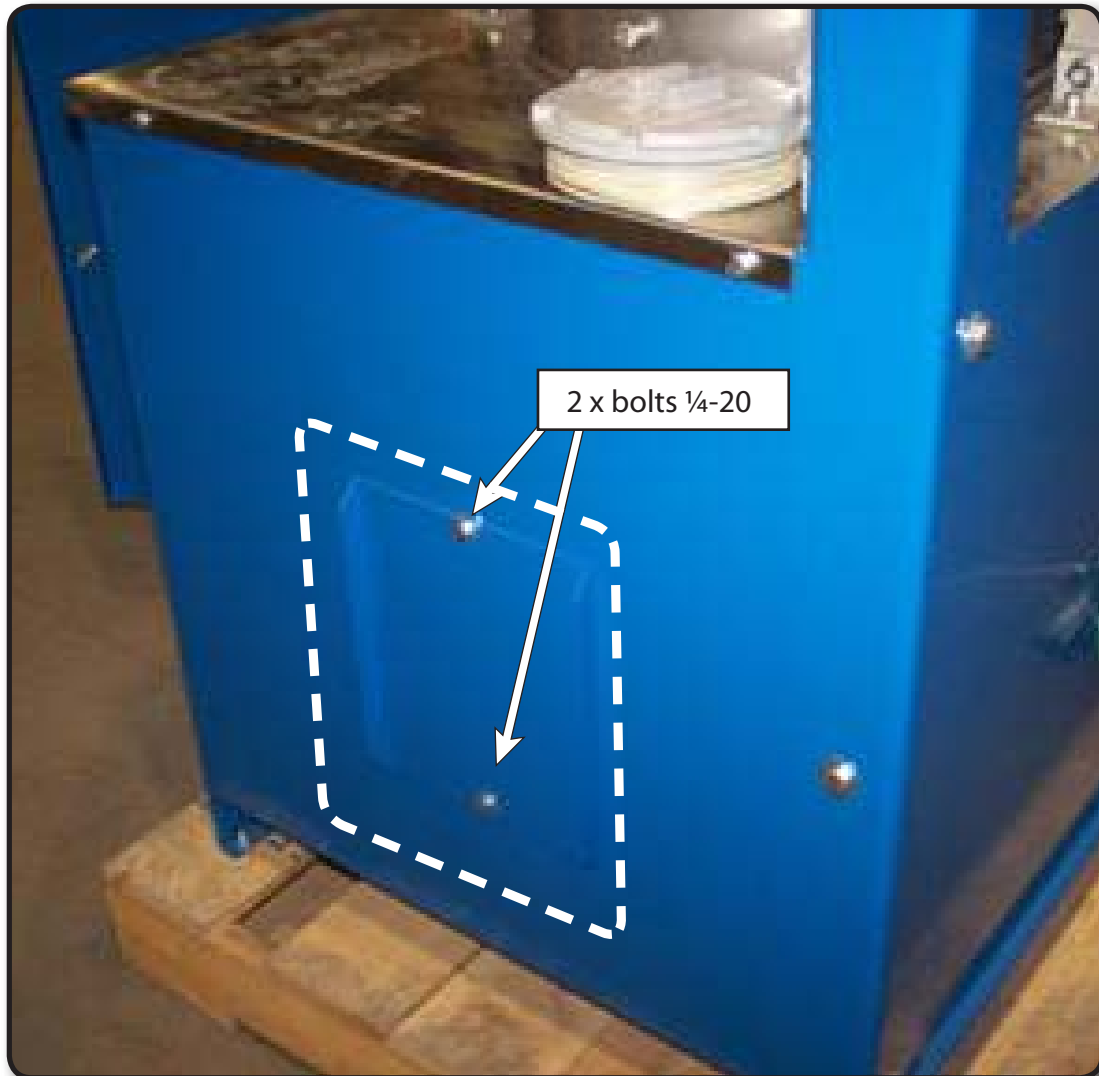
Place the thermostat probe (1) as shown and fix it with 2 clamps (2) on the existing screws with nuts and lock washers.



#	STOCK	DESCRIPTION	QTY
1	308005	NEW THERMOSTAT PROBE	1
2		CLAMP	2

### 5 - INSTALL SIDE DOOR

Reinstall the side door (#1) on right side with 2 x bolts 1/4-20.



### 6 - CEMENT FOR EYS FITTING

- Remove plug with Allen key from explosion proof "EYS" (Fig. 1).
- Insert cotton (1) on both ends of the fitting.
- Prepare cement SC-5 (2) as per instruction.
- Poor cement until EYS (3) is fill up but don't fill top section where plug is located.
- Put back hex. plugs on "EYS".

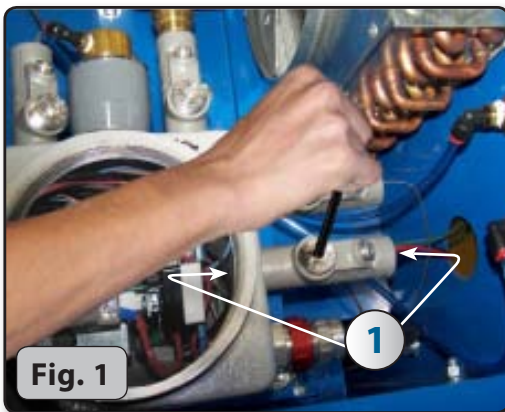
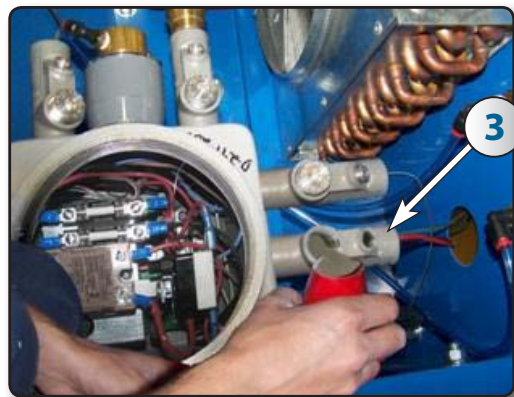


Fig. 1



#	STOCK	DESCRIPTION	QTY
1	321019	COTTON FOR "EYS"	-
2	323190	CEMENT "EYS" 800N'	-
3	322012	"EYS"	1



## ABOUT THE COMPANY

### WHO WE ARE

IST is a leading manufacturer of equipment for the surface treatment industry and the solvent recycling industry. Our extensive line of equipment includes batch units and automated machines designed to achieve the highest manufacturing standards.

### MISSION

IST works tightly with their customers to transform industrial processes to improve their quality, productivity, and environmental footprint.

### OUR SERVICES

- Custom Design & Fabrication
- Installation & Startup
- Preventative Maintenance Program
- Private Labels
- Testing Lab
- 24/7 Technical Support

### INDUSTRIES WE SERVE

- Aerospace & Aviation
- Aluminium Smelters
- Automotive
- Construction & Civil Engineering
- Flexography (labelling) & Lithography
- Foundry & Forge
- General Manufacturing
- Military
- Power & Energy
- Rail & Mass Transit
- Shipyards
- Wood finishing

