

WETBLAST SYSTEM



- Warranty
- Safety
- Operation
- Service Parts
- Accessory Information
- Registration Form

INSTRUCTION MANUAL

TABLE OF CONTENTS

	Page
ISTBLAST LIMITED WARRANTY	3
NOTICE TO PURCHASERS AND USERS OF OUR PRODUCTS AND THIS INFORMATIONAL MATERIAL	4
SAFETY AND WARNING.....	4
GENERAL SAFETY RULES	5
PERSONAL SAFETY	5
UNIT USE AND CARE	5
INTRODUCTION.....	6
INSTALLATION.....	6
ELECTRICAL CONNECTIONS.....	7
VERIFY INSTALLATION.....	7
ABRASIVE MEDIA LOADING	8
ABRASIVES	8
OPERATION	9
OPERATION (CONT'D).....	10
INSIDE VIEW - PARTS.....	11
INSIDE VIEW - PARTS (CONT'D).....	12
FRONT VIEW - PARTS.....	13
REAR VIEW - PARTS.....	14
COMPLETE G5 WITH BN2-5 NOZZLE ASS'Y - PARTS.....	15
COMPLETE FOOT PEDAL ASS'Y - PARTS.....	16
COMPLETE BLOW-OFF GUN ASS'Y - PARTS	16
JET DIAGRAM	17
ELECTRICAL DIAGRAM.....	18
NO CONTACT FOOT PEDAL ELECTRICAL DIAGRAM	19
RESERVOIR LIQUID	20
PNEUMATIC DIAGRAM	21
SEMI ELLIPTIC HEAD	22
SEMI ELLIPTIC HEAD PNEUMATIC DIAGRAM.....	23
ISTBLAST WARRANTY REGISTRATION	24

ISTBLAST LIMITED WARRANTY

ISTblast warrants all equipment led in this manual which is manufactured by ISTblast and bearing its name, to be free from defects in material and workmanship on the date of sale by an authorized ISTblast distributor to the original purchaser for use. Notwithstanding any special, extended or limited warranty published by ISTblast will, for a period of TWELVE (12) months from the date of sale, repair or replace any part of the equipment determined by ISTblast to be defective. This warranty applies only when the equipment is installed, operated and maintained in accordance with ISTblast's written recommendations.

This warranty does not cover, and ISTblast shall not be liable for general wear and tear, or any malfunction, damage or wear caused by faulty installation, misapplication, abrasion, corrosion, inadequate or improper maintenance, negligence, accident, tampering, or substitution of non- ISTblast component parts. Nor shall ISTblast be liable for malfunction, damage or wear caused by the incompatibility with ISTblast equipment with structures, accessories, equipment or materials not supplied by ISTblast, or the improper design, manufacture, installation, operation or maintenance of structures, accessories, equipment or materials not supplied by ISTblast.

This warranty is conditioned upon the prepaid return of the equipment claimed to be defective to an authorized ISTblast distributor for verification of the claimed defect. If the claimed defect is verified, ISTblast will repair or replace free of charge any defective parts. The equipment will be returned to the original purchaser, transportation prepaid. If the inspection of the equipment does not disclose any defect in material or workmanship, repairs will be made at a reasonable charge, which charges may include the costs of parts, labor, and transportation.

THIS WARRANTY IS EXCLUSIVE, AND IS IN LIEU OF ANY OTHER WARRANTIES, EXPRESSED OR IMPLIED, INCLUDING BUT NOT LIMITED TO WARRANTY OF MERCHANTABILITY OR WARRANTY OF FITNESS FOR A PARTICULAR PURPOSE.

ISTblast's sole obligation and the buyer's sole remedy for any breach of warranty shall be as set forth above. The buyer agrees that no other remedy (including, but not limited to, incidental or consequential damages for lost profits, lost sales, injury to person or property, or any other incidental or consequential loss) shall be available. Any action for breach of warranty must be brought forward within one (1) year of the date of sale.

ISTblast MAKES NO WARRANTY, AND DISCLAIMS ALL IMPLIED WARRANTIES OF MERCHANTABILITY AND FITNESS FOR A PARTICULAR PURPOSE, IN CONNECTION WITH ACCESSORIES, EQUIPMENT, MATERIALS OR COMPONENTS SOLD BUT NOT MANUFACTURED BY ISTblast. These items sold, but not manufactured by ISTblast (such as electric motors, switches, hose, etc.), are subject to the warranty, if any, of their manufacturer. ISTblast will provide the purchaser with reasonable assistance in making any claim for breach of these warranties.

LIMITATION OF LIABILITY

In no event will ISTblast be liable for indirect, incidental, special or consequential damages resulting from ISTblast supplying equipment hereunder, or the furnishing, performance, or use of any products or other goods sold hereto, whether due to a breach of contract, breach of warranty, the negligence of ISTblast, or otherwise.

Report all accidents or "near misses" which involve ISTblast products to:
- Technical Assistance

The following items are not covered under the ISTblast warranty policy:
- Parts or chassis replacement due to normal wears.

Defective material or workmanship is not considered normal wear

NOTICE TO PURCHASERS AND USERS OF OUR PRODUCTS AND THIS INFORMATIONAL MATERIAL

The products described in this material, and the information relating to those products, is intended for knowledgeable, experienced users of abrasive blasting equipment.

No representation is intended or made as to the suitability of the products described herein for any particular purpose of application. No representations are intended or made as to the efficiency, production rate, or the useful life of the products described herein. Any estimate regarding production rates or production finishes are the responsibility of the user and must be derived solely from the user's experience and expertise, and must not be based on information in this material.

The products described in this material may be combined by the user in a variety of ways for purposes determined solely by the user. No representations are intended or made as to the suitability or engineering balance of the combination of products determined by the user in his selection, nor as to the compliance with regulations or standard practice of such combinations of components or products.

It is the responsibility of the knowledgeable, experienced users of the products mentioned in this material to familiarize themselves with the appropriate laws, regulations and safe practices that apply to these products, equipment that is connected to these products and materials that may be used with these products.

It is the responsibility of the user to insure that proper training of operators has been performed and a safe work environment is provided.

Our company is proud to provide a variety of products to the abrasive blasting industry, and we have confidence that the professionals in our industry will utilize their knowledge and expertise in the safe efficient use of these products.

SAFETY AND WARNING

GENERAL SAFETY

1. Carefully inspect the shipping carton for any signs of transport damage. The damage to the carton often indicates possibility of transport damage to the equipment inside.
2. Carefully remove your ISTblast SANDBLASTING CABINET from the shipping carton and skid.
3. Check your equipment immediately to ensure that it is free of transport damage. Report any transport damage to the carrier without delay for possible claim procedures. International Surface Technologies inc. is not responsible for damage to equipment after it leaves our warehouse.
4. Check the equipment I and compare it with the parts you have received. If any parts are missing, contact the supplier you purchased the equipment from.

Before operating the ISTblast SANDBLASTING CABINET, read this Instruction Manual completely. All ISTblast products are engineered and manufactured to the highest performance standards and have been subjected to detail testing before shipment from the factory.

GENERAL SAFETY RULES

- **KEEP WORK AREA CLEAN.**
- **KEEP CHILDREN AWAY.** Do not let visitors come in contact with the equipment. All visitors should be kept away from the work area.

PERSONAL SAFETY

- **GUARD AGAINST ELECTRIC SHOCK.** Non-skid footwear is recommended where damp or wet ground may be encountered. A ground fault circuit interrupter protected power line must be used for these conditions.
- **DRESS PROPERLY.** Do not wear loose clothing or jewelry. They can be caught in the moving parts. Wear protective hair covering to contain long hair.
- **USE SAFETY EQUIPMENT. WEAR SAFETY GOGGLES** or glasses with side shields.
- **WEAR A DUST PROOF MASK.**
- **STAY ALERT. USE YOUR COMMON SENSE.** Concentrate on what you are doing. Do not operate the unit when you are tired or under the influence of drugs.
- **DO NOT OVERREACH.** Keep proper footing and balance at all times.
- **BEFORE CONNECTING THE UNIT** be sure the power is the same as that specified on the nameplate of the Sand Blasting Cabinet. With power greater than that specified on the Nameplate can seriously injure the user – as well as damage the Unit.

UNIT USE AND CARE

- **DO NOT FORCE THE UNIT.** It will perform better and safer at the rate for which it was designed.
 - **THE USE OF ANY OTHER ACCESSORIES** not specified in this manual may create a hazard.
 - **CLOSE THE MAIN BREAKER SWITCH BEFORE SERVICING** or when not in use.
 - **DO NOT ALTER OR MISUSE THE UNIT.** These units are precision built. Any alteration or modification not specified is misuse and may result in a dangerous situation.
- Only trained repairmen should attempt (●) **ALL REPAIRS**, electrical or mechanical. Contact the nearest ISTblast a repair service facility. Use only ISTblast replacement parts; any other parts may create a hazard.

INTRODUCTION

Welcome to the ISTblast family of sandblasting products. This booklet contains helpful information and acquaints you with the operation and maintenance of your equipment. Please read carefully and follow our recommendations to assure trouble free operation. If you have any questions, please do not hesitate to contact your distributor or our technical service.

INSTALLATION

1. Make sure the cabinet is leveled and well grounded. Do not place on a wooden floor or a rubber mat, unless a ground wire has been installed. Check with a qualified electrician.
2. Place the system to the installation location
3. Unwrap and remove the cabinet from the pallet
4. Insure there is adequate space on both sides of the cabinet for full opening of part loading/unloading and maintenance access doors.
5. Insure that there is adequate space at both sides of the system for easy access to components such as the reclaimer and dust collector
6. The dust collector should be located on a leveled area near the back of the cabinet, on the right side (while facing cabinet). Attach one end of the corrugated discharge hose to the outlet of the reclaimer and the other end to the inlet located at the bottom of the dust collector. Secure both ends with the supplied clamps. See dust collector section for more details

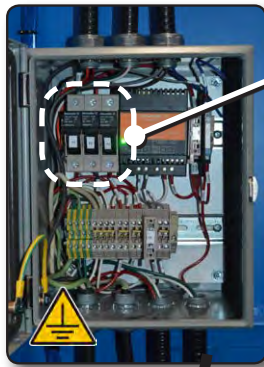
Connect your shop's air supply line to the air inlet. The hose should have a minimum of 1/2 inch inside diameter. Never use male-female quick couplings. **Choose couplings that offer as little restriction to the airflow as possible.** Compressed air must be clean, dry, and oil free

Air consumption - Suction System

PROPER JET/NOZZLE COMBINATIONS		
JET	NOZZLE	AIR CONSUMPTION
1/8"	1/4"	21 CFM * @ 80 PSI *
5/32"	5/16" standard	34 CFM * @ 80 PSI *
3/16"	3/8"	48 CFM * @ 80 PSI *

- CFM: Cubic Feet / Minute * PSI : Pounds / Square Inch

ELECTRICAL CONNECTIONS



Fuses



Connect cabinet power supply cord to standard 120 V / 20 A outlet.

All electrical connections to the ISTblast cabinet should be made by a qualified electrician and must comply to the codes, standards, and procedures specified by the local authority having jurisdiction.

The customer is responsible for providing appropriate disconnecting means adjacent to the equipment for each incoming power circuit.



It is important to connect the ISTblast system to an Earth Ground to bleed off static electricity, which may be generated while blasting. The Earth Ground may also reduce the discomfort an operator may experience when static electricity is discharged.

VERIFY INSTALLATION

1. Check that all pipe and hose connections are tightly fastened and air tight.
2. Check that all electrical box covers are securely installed.



Disable and lock out power sources before performing service or maintenance work. Do not look into the fan outlet to determine the correct motor rotation. Check that the fan exhaust is clear of tools and free of debris before checking fan rotation. To avoid personal injury, stay clear of the fan exhaust.

ABRASIVE MEDIA LOADING

Start the electric motor. Open the cabinet door and slowly pour about 25 pounds of abrasive inside the cabinet.

Important note : Your suction cabinet is designed to operate efficiently with most **recyclable abrasive media** on the market. However, certain types such as sand, recycled glass or silica are not recommended and should not be used in our blast cabinet. These abrasives generate very fine dust that may block the bag's pores, obstruct the ventilation system and cause dust accumulation inside the cabinet while in use. Instead, use reclaimable abrasives such as glass beads, aluminum oxide steel grit or plastic media. **For better results** for the reclaiming process, **please call one of your technical representatives** if you have to use a different **type of abrasive** from the one your equipment has been set for at the factory.

ABRASIVES

Natural abrasives

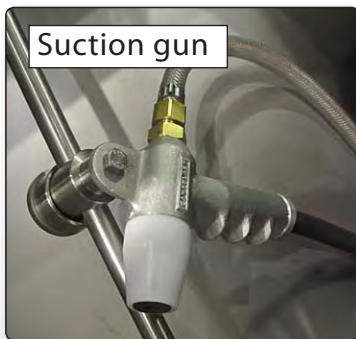
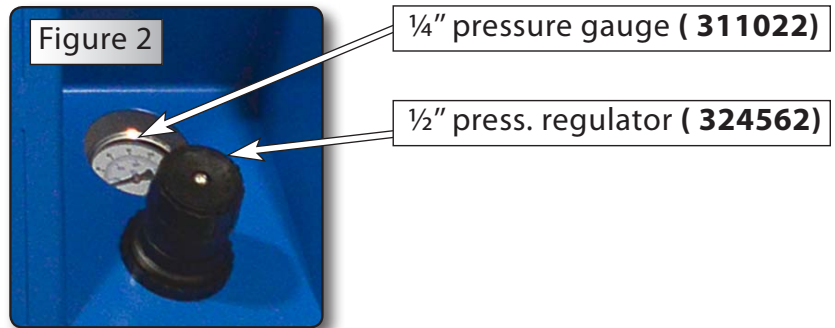
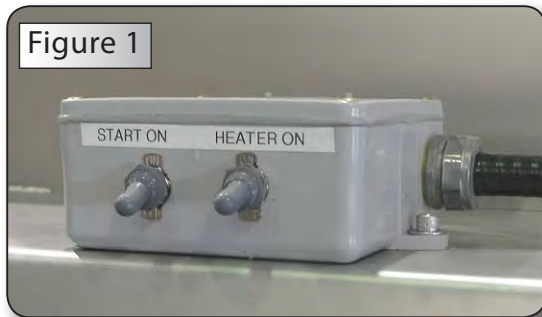
NAME	TYPE	SHAPE	HARDNESS SCALE	DENSITY PDS/CUFT	CONTENT SILICA	DUST FACTOR	MESH SIZE	REUSE FACTOR	AVAILABILITY
Silica Sands	Silica	Rounded Irregular	5-6 Mohs	100	+90%	High	6-270	Poor	Good
Minerai Sands	Oxide	Irregular	7 Mohs	128	-5%	Moderate	55-90	Fair	Limited
Industrial Garnet	Oxide	Sub-Angular	7-8 Mohs	130-147	-1%	Moderate	8-300	Fair	Limited
Flint	Silica	Angular	6.5-7 Mohs	74-90	+90%	Moderate	6-300	Fair	Limited

OPERATION

The cabinet is entirely built out of stainless steel and has a loading door on the right or left.

During the blasting of the surface by suction in a liquid environment, the compressed air propels a mixture at high velocity directly onto the part being stripped. In this case the mixture is a combination of abrasive and water. It is continuously agitated to prevent the separation of the abrasive and the water. **(volume 8 liters : 6 liters of water and 2 liters of abrasive)**

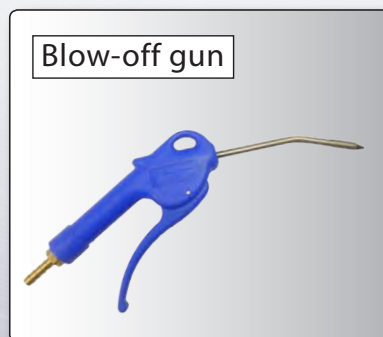
1. Turn the cabinet snap switch to the "START ON" position. The cabinet lights and motor will power on. **(Fig. 1)**
2. Turn the cabinet snap switch to the "HEATHER ON" position. The heather will power on. **(Fig. 1)**
3. Set the blast air pressure regulator to the desired pressure. **(Fig. 2)**
4. Insert both hands into the cabinet gloves, take the gun and press the foot pedal : blasting will start, wait a few second and the blast flow will stabilize, and you can place your part under the blast nozzle and water jets.



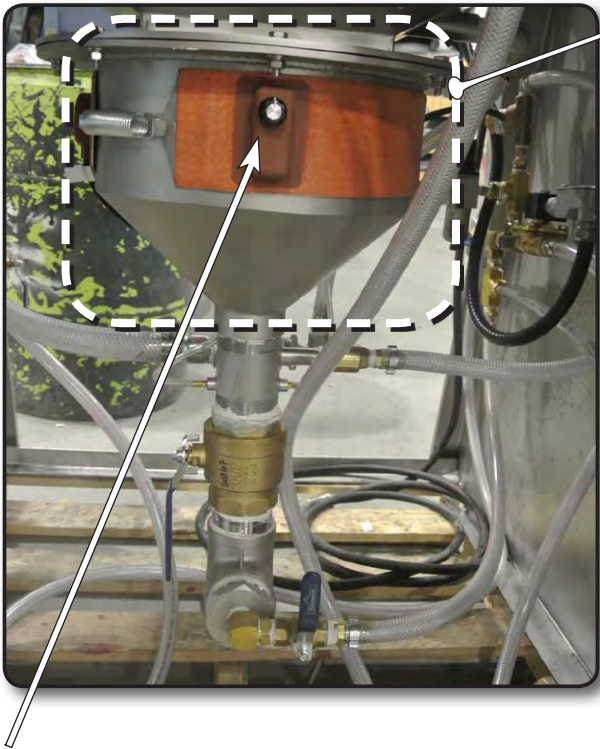
A G5-BN2-5 suction gun (see parts ass'y p. 15) with a wet-blast type head equipped with a boron carbide nozzle is mounted on an adjustable arm.

The rinse gun allows the part being cleaned and free of the mixture of abrasive.

The blow-off gun (see parts ass'y p. 16) allows the part being blasted to be cleaned and free of the mixture of abrasive/water.



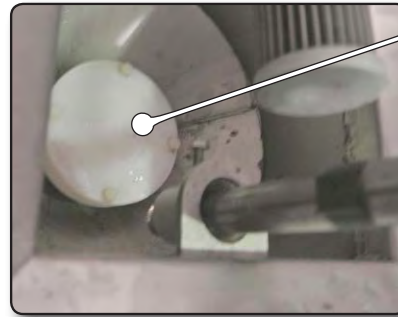
OPERATION (CONT'D)



Semi-elliptic Head

The semi-elliptic head is entirely designed and manufactured in our plant. The head is made of stainless steel, is directly connected to the cabinet's recovery pit and is surrounded by a 300 W heating band (901904) connected to an 120 volt electrical source.

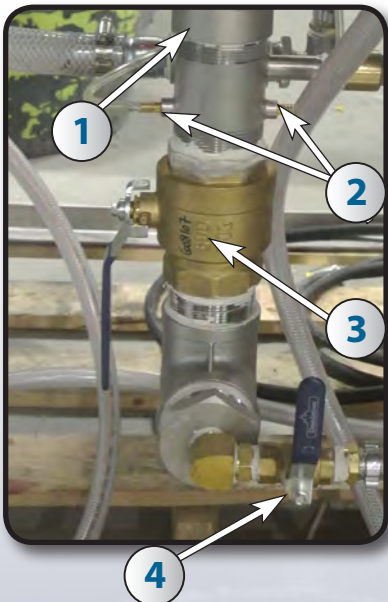
The semi-elliptic head provides a homogenous mixture of the abrasive and the hot water due to an **agitator** being located inside it, which maximizes the blasting performance.



AGITATOR

The adjustment of the temperature with the heating band and knob is only needed for the comfort of the operator.

IMPORTANT NOTICE

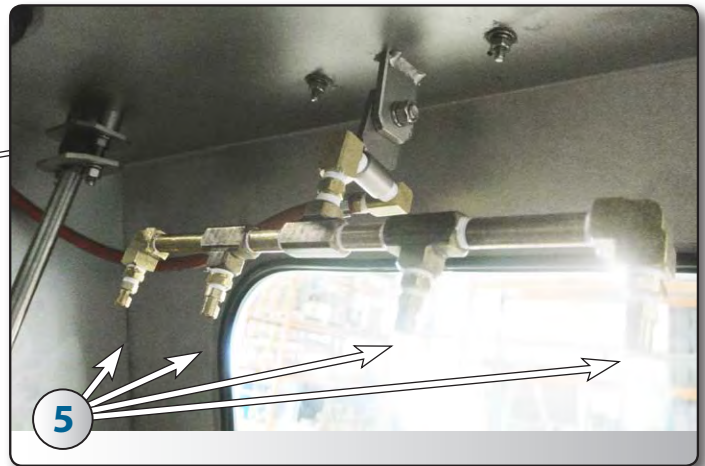


If the machine is stopped for more than 2 days and to prevent the formation of a plug between the reservoir base (1) and the superior part of the valve drain (3), 2 solutions are proposed :

1. Keep the air injectors (2) at a constant pressure of 5 to 10 PSI, OR
2. Completely empty and rinse the machine of the abrasive/water mixture.

The ½" ball valve (4) allows the cleaning of the drain with air impulses.

INSIDE VIEW - PARTS



The interior of the window is equipped with a window washer system activated by a switch. The pneumatic diagram of this system is shown page 17.

BLOW-OFF GUN (SEE DETAILS P. 16)

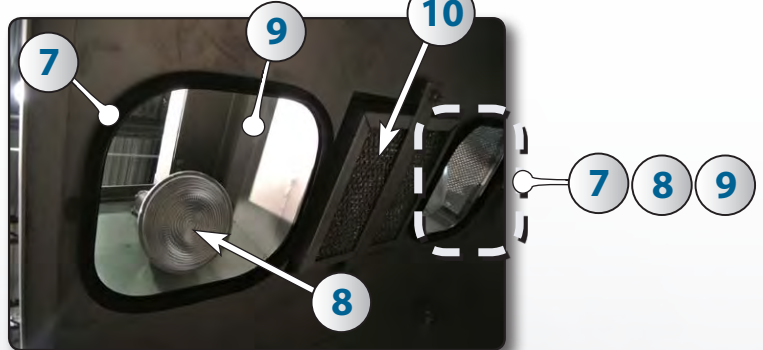


SEE COMPLETE ASS'Y P. 14



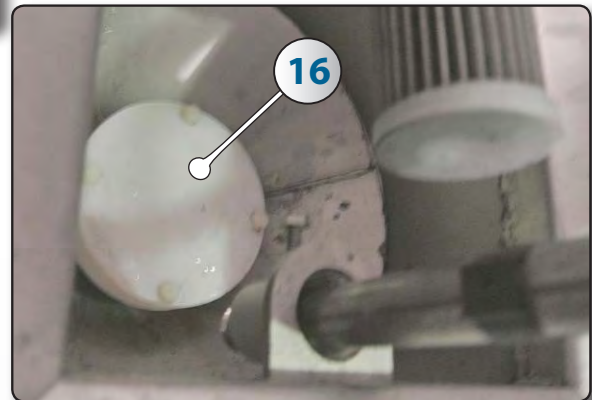
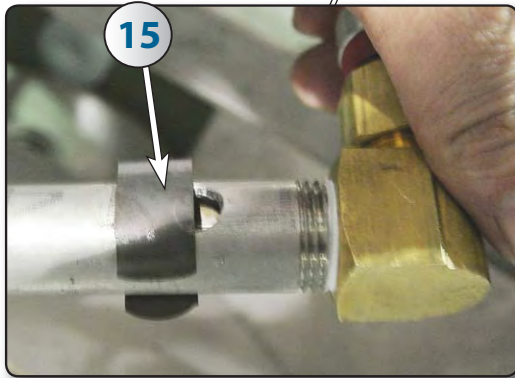
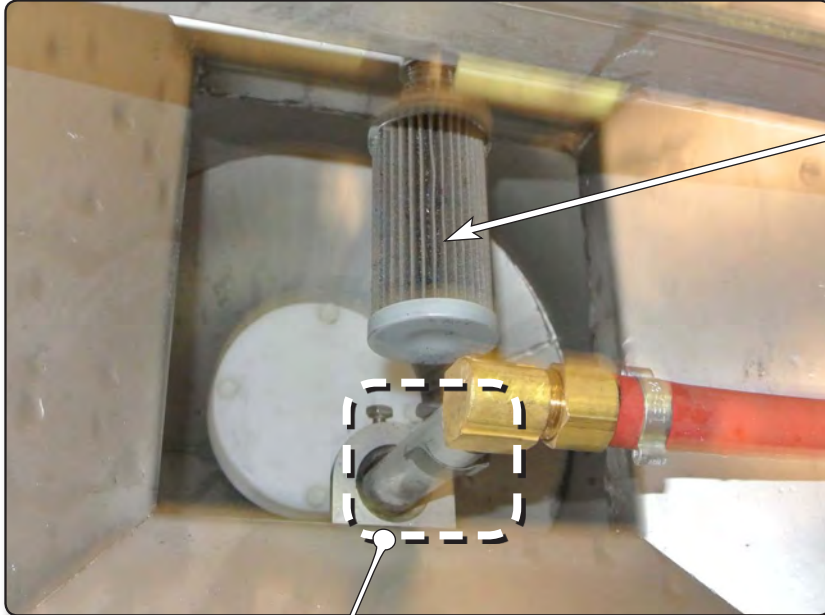
A G5-BN2-5 suction gun (1) with a wet-blast type head equipped with a boron carbide nozzle is mounted on an optional adjustable arm. The blow-off gun (6) allows the part being blasted to be cleaned and free of the mixture of abrasive/water.

LIGHTINGS



INSIDE VIEW - PARTS (CONT'D)

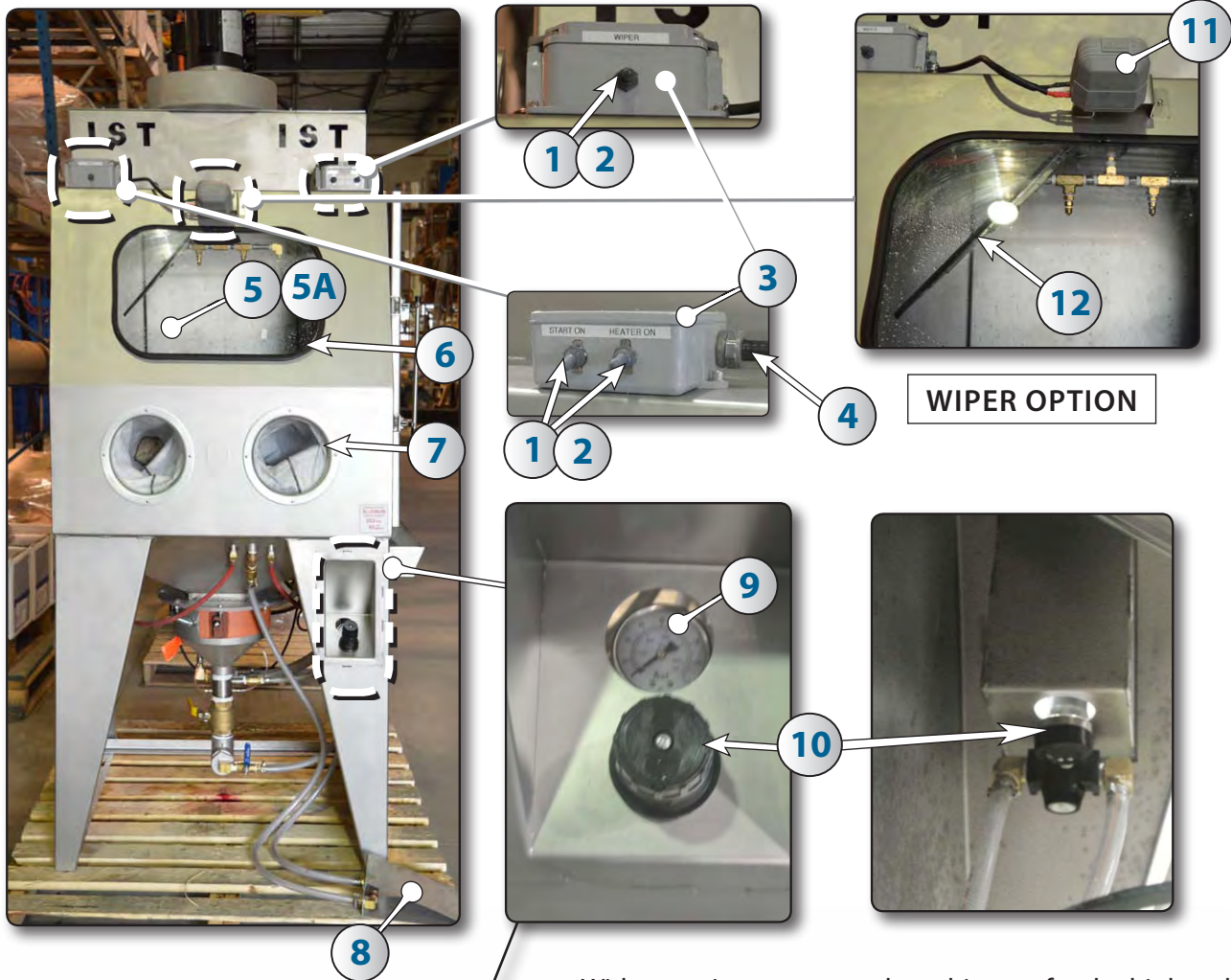
PARTS UNDER THE FLOOR GRID



#	STOCK	DESCRIPTION
1	-/-	SEE DETAILS P. 15
2	603222	WETBLAST GLOVES
3	910471	FLOOR GRID
4	618321	TYPE "D" RUBBER DOOR
5	910102	WATER JET (4)
6	-/-	SEE DETAILS P. 16
7	618300	WINDOW RUBBER LINING
8	916852	DEL SPOT LIGHT

#	STOCK	DESCRIPTION
9	910226	LAMINATED WINDOW
10	911114	FILTER
11	606104	½" CLEAR PVC HOSE
12	632730	½" @ 90° STREET ELBOW
13	632760	½" CONNECTOR
14	911027	FILTER
15	608011	FLOW ADJUSTEMENT RING
16	908112	WATER AGITATOR

FRONT VIEW - PARTS



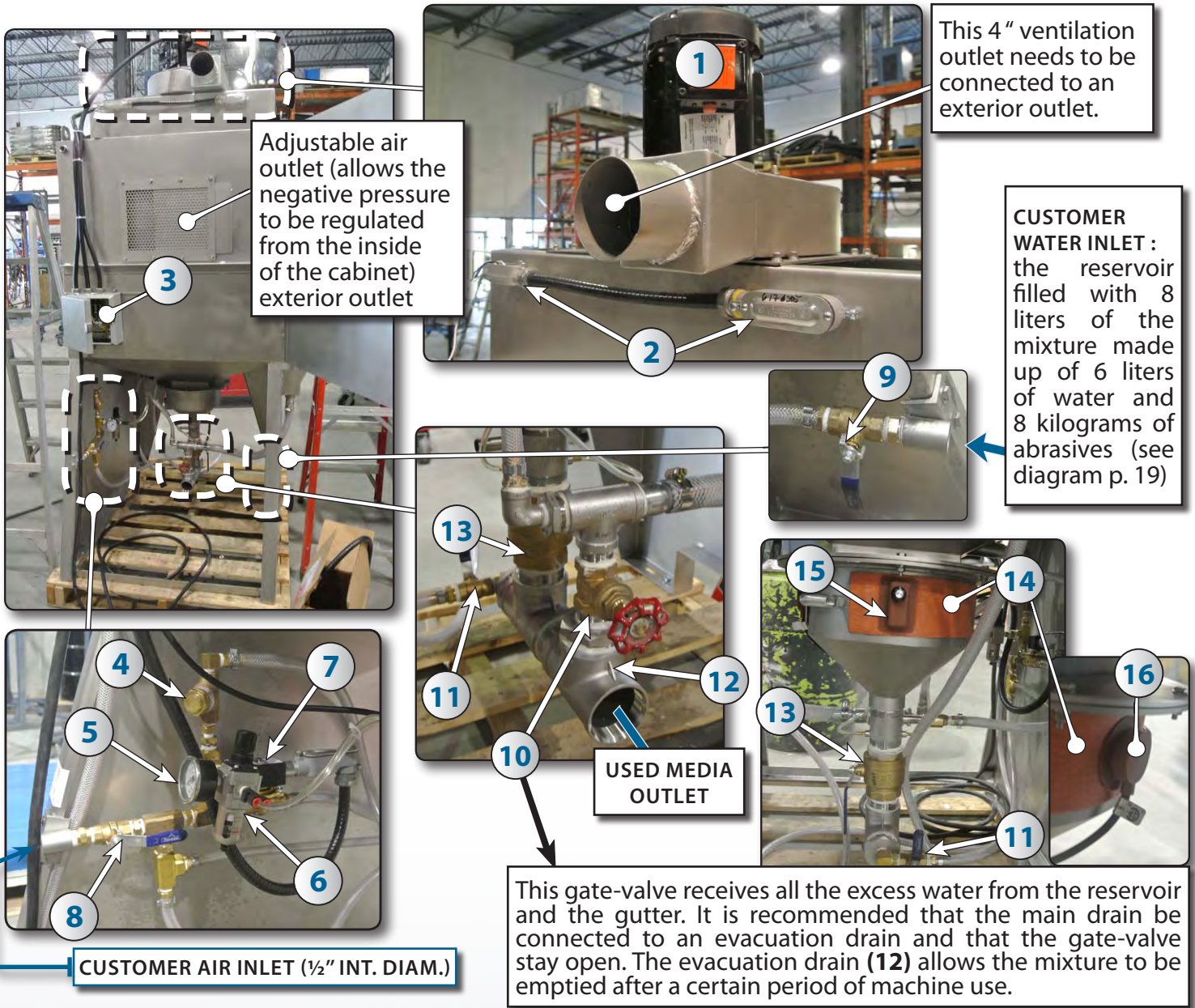
With a suction system such as this one, for the highest blasting performance **it is recommended not to exceed a pressure of 80 psi.**

#	STOCK	DESCRIPTION
1	617014	SWITCH
2	617019	SWITCH PROTECTOR
3	617326	PVC JUNCT. BOX 5 x 5 x 2
4	616535	LIQUID TIGHT CABLE
5	610205	LAMINATED GLASS 22" X 14"
5A	613026	SELF ADHESIVE PLASTIC PROTECTION
6	610207	RUBBER WINDOW FRAME
7	624137	"T" ATTACHMENT #188 (11 1/4")

#	STOCK	DESCRIPTION
8	610270	SUCTION PEDAL S/S
9	611022	1/4" PRESSURE GAUGE
10	608022	1/2" PRESSURE REGULATOR
11	918400	WIPER MOTOR
12		WIPER

During the blasting of the surface by suction in a liquid environment, the compressed air propels a mixture at high velocity directly onto the part being stripped. In this case the mixture is a combination of abrasive media and water. It is continuously agitated to prevent the separation of the abrasive and the water.

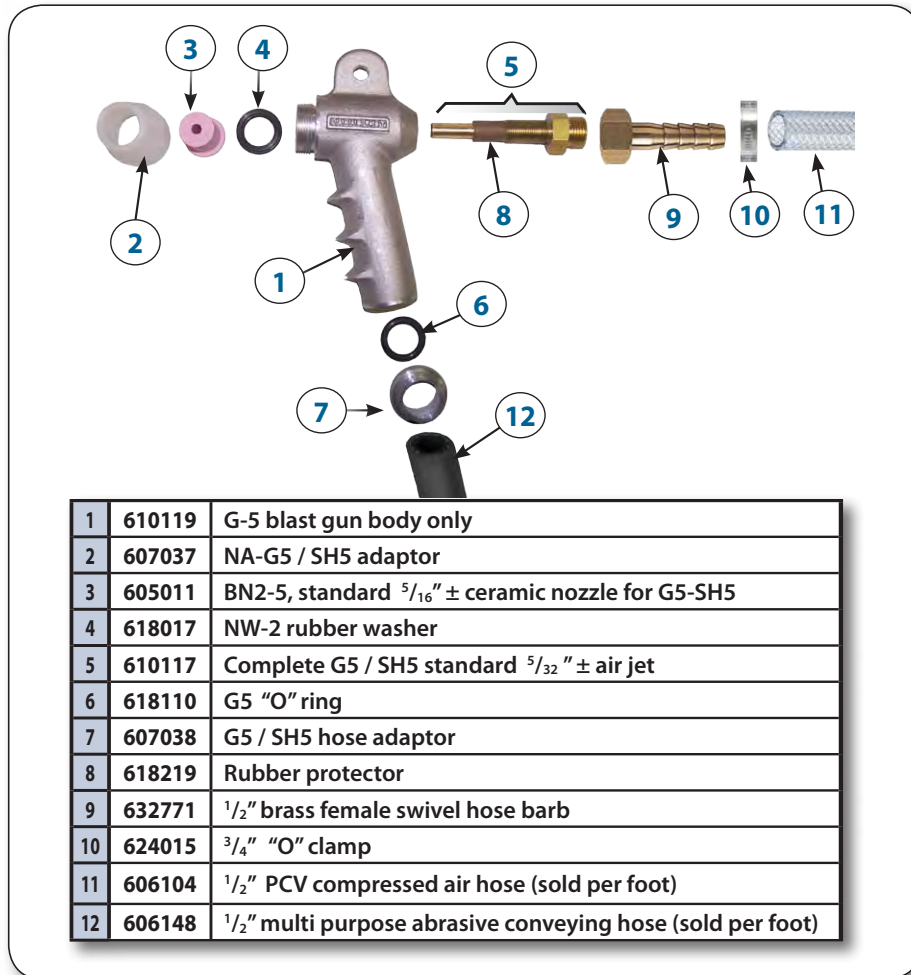
REAR VIEW - PARTS



#	STOCK	DESCRIPTION
1	616311	½ HP MOTOR 120V -8 A
2	617305	½" - 90° JUNCTION BOX
2A	617304	"T" ½"
3	-/-	FUSES ELECTRICAL BOX
4	908525	3/8" FLOW CONTROL
5	311002	¼" PRESSURE GAUGE
6	324562	PRESSURE REGULATOR
7	908576	SOLENOID VALVE
8	608102	½" BALL VALVE

#	STOCK	DESCRIPTION
9	608102	½" BALL VALVE
10	608154	GATE VALVE
11	608102	½" BALL VALVE
12	930070	"T" 2"
13	608107	2" BALL-VALVE DRAIN
14	901442	500W HEATING BAND
15	-/-	HEATING BAND KNOB
16	-/-	HEATING BAND SENSOR

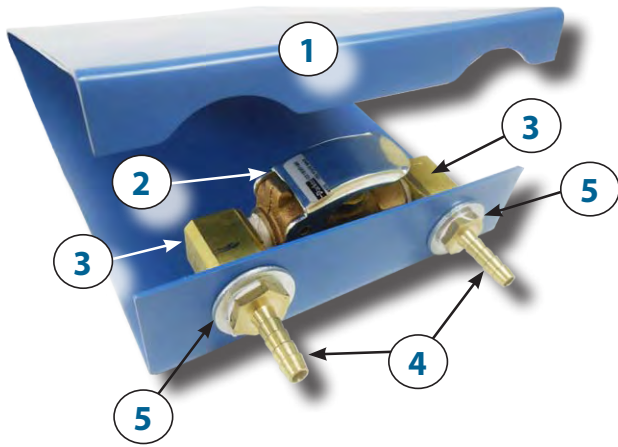
COMPLETE G5 WITH BN2-5 NOZZLE ASS'Y - PARTS



PROPER AIR JET/NOZZLE COMBINATIONS							
Complete blast guns (pre-assembled*)			NOZZLES			Air jet (Complete)	Orifices ±
G5	SH-5	Nozzles	Type	Orifice	Code		
610121	610135	Ceramic	CN2-4	1/4"	605004	610116	1/8"
610120	610136	Ceramic (Standard)	CN2-5	5/16"	605005	610117	5/32"
610166	610144	Ceramic	CN2-6	3/8"	605015	610109	3/16"
610122	610137	Ceramic	CN2-7	7/16"	605006	610118	7/32"
610123	610138	Tungsten	TN2-4	1/4"	605007	610116	1/8"
610124	610139	Tungsten	TN2-5	5/16"	605008	610117	5/32"
610167	610145	Tungsten	TN2-6	3/8"	605018	610109	3/16"
610125	610140	Tungsten	TN2-7	7/16"	605009	610118	7/32"
610126	610141	Boron carbide	BN2-4	1/4"	605010	610116	1/8"
610127	610142	Boron carbide	BN2-5	5/16"	605011	610117	5/32"
610168	610146	Boron carbide	BN2-6	3/8"	605021	610109	3/16"
610128	610143	Boron carbide	BN2-7	7/16"	605012	610118	7/32"

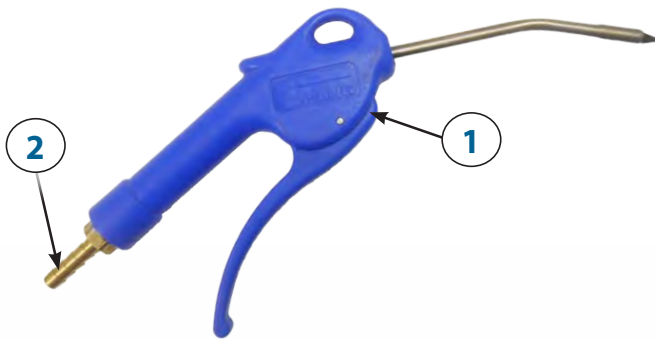
* A pre-assembled gun includes parts 1 to 8.

COMPLETE FOOT PEDAL ASS'Y - PARTS



#	STOCK	DESCRIPTION	Qty
/	610270	COMPLETE FOOT PEDAL	1
1	610268	PEDAL BODY	1
2	608604	TWO (2) WAYS VALVE	1
3	632551	3/8" @ 90° STREET ELBOW	2
4	632761	3/8" MTP X 1/2" HOSE MENDER	2
5	610274	FLAT WASHER	2

COMPLETE BLOW-OFF GUN ASS'Y - PARTS



#	STOCK	DESCRIPTION	Qty
/	610275	COMPLETE AIR GUN	1
1	610277	AIR GUN	1
2	632270	1/4" PL ADAPTOR	1

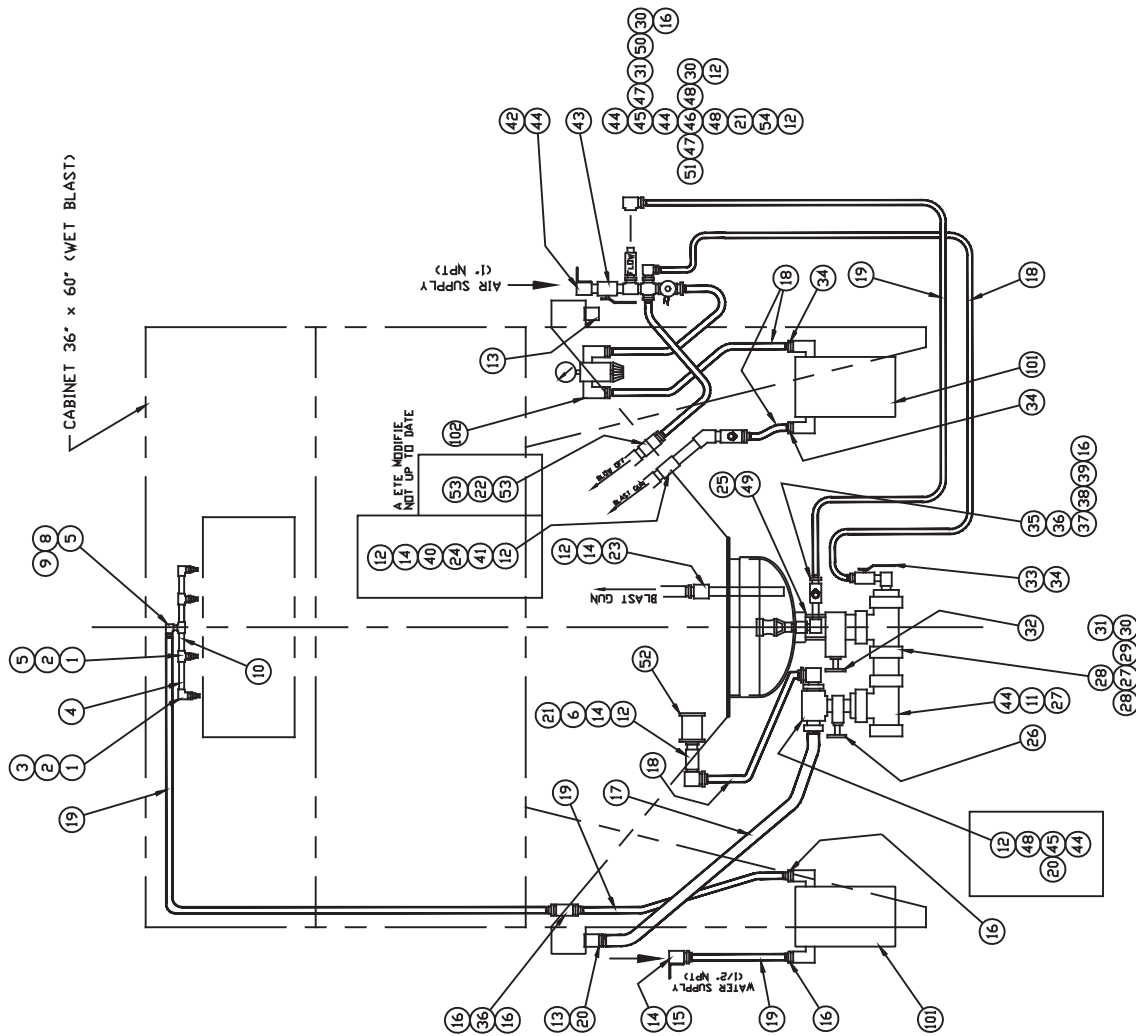
COMPLETE RINCE GUN ASS'Y - PARTS



#	STOCK	DESCRIPTION	Qty
1	910270	COMPLETE "IPEX" GUN	1
2	632273	NOZZLE GUN 1/8" HOSE BARB	1

JET DIAGRAM

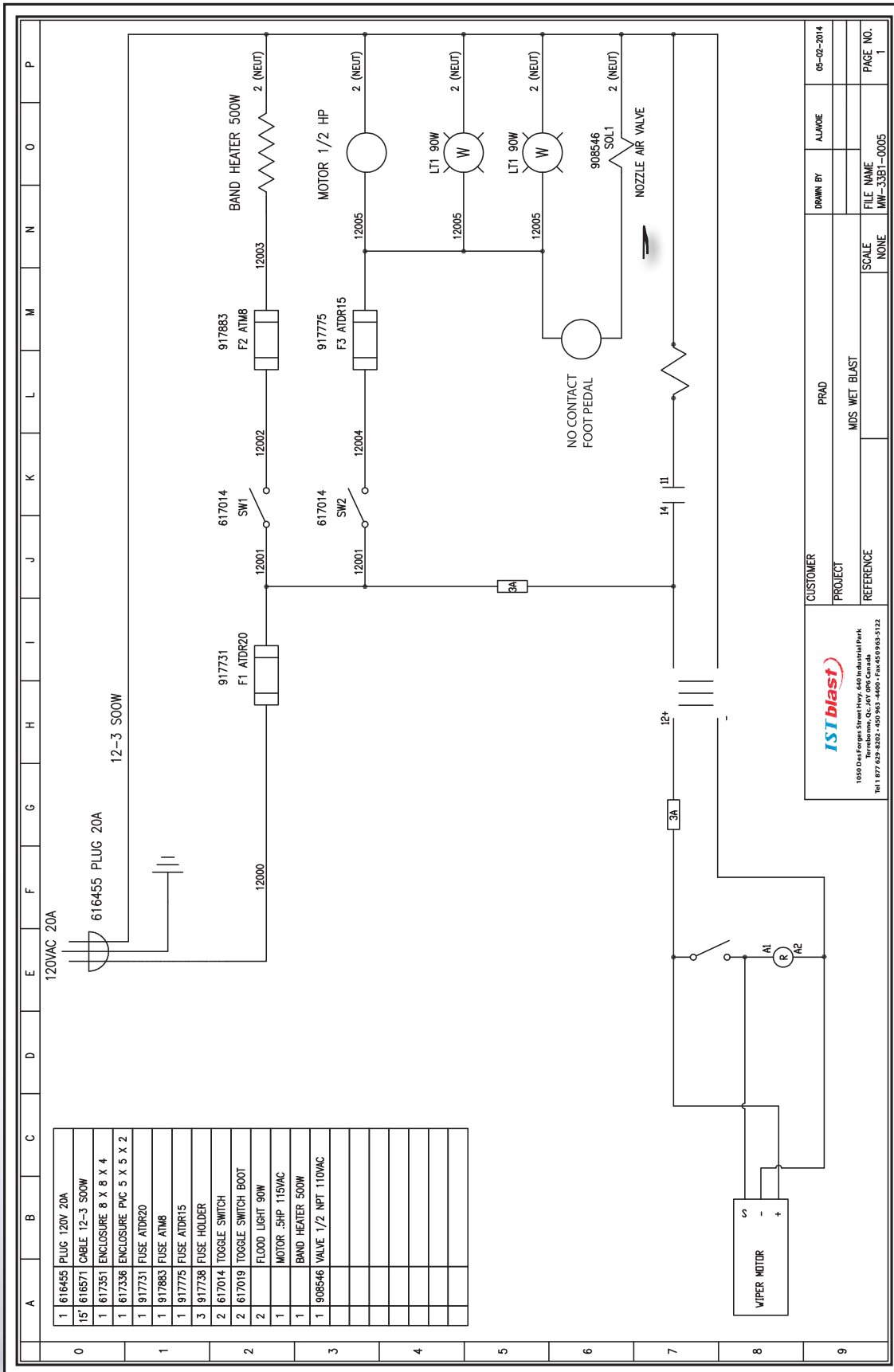
NUM	DESCRIPTION	MAT'L
1	FLAT .1/8 NPT (0811683)	BRASS
2	1/4 x 1/8 BUSHING	...
3	1/4 x 90° ELBOW	...
4	1/4 x 3 NIPPLE	...
5	1/2 TEE	...
6	1/2 x 90° STREET ELBOW	...
8	1/4 x 90° STREET ELBOW	...
9	1/4 NPT x 3/8 HOSE MENDER	...
10	1/4 x 2 NIPPLE	...
11	2 x 1 BUSHING	...
12	1/2 NPT x 1/2 HOSE MENDER	S/S
13	1 NPT HALF COUPLING	S/S
14	1/2 COUPLING	BRASS
15	1/2 NPT x 3/8 HOSE MENDER	...
16	3/8 NPT x 3/8 HOSE MENDER	...
17	1/8 HOSE	MULTI-PUR
18	1/2 90 HOSE	MULTI-PUR
19	3/8 90 HOSE	BRASS
20	1 NPT x 1 HOSE MENDER	BRASS
21	1/2 COUPLING	S/S
22	1/2 COUPLING	S/S
23	1/2 x 3 NIPPLE	BRASS
24	1/2 x 45° STREET ELBOW	S/S
25	1/2 x 45° STREET ELBOW	BRASS
26	1/2 HALF COUPLING	S/S
27	2 TEE	BRASS
28	2 CLOSE NIPPLE	...
29	1/2 x 3/8 BUSHING	...
30	3/8 x 90° STREET ELBOW	...
31	3/8 CLOSE NIPPLE	...
32	2 GATE VALVE	...
33	1/2 BALL VALVE	...
34	3/8 NPT x 1/2 HOSE MENDER	...
35	3/8 COUPLING (0810285)	...
36	1/2 x 3 NIPPLE	S/S
37	1/2 x 3 NIPPLE	S/S
38	1/2 x 3 NIPPLE	BRASS
39	1/2 x 3 NIPPLE	BRASS
40	1/2 x 3 NIPPLE	BRASS
41	CHECK VALVE 1/2 SPRING TYPE (0812841)	BRASS
42	1 COUPLING	BRASS
43	1 BALL VALVE	BRASS
44	1 CLOSE NIPPLE	...
45	2 TEE	...
46	1 CROSS	...
47	1 x 3/8 BUSHING	...
48	1 x 1/2 BUSHING	...
49	2 x 3 NIPPLE	...
50	1 FLOW CONTROL 3/8 (0812841)	BRASS
51	3/8 NPT x 1/4 HOSE MENDER	BRASS
52	SUCTION STRAINER 1/2 (0812841)	BRASS
53	1/4 NPT x 1/4 HOSE MENDER	BRASS
54	1/4 NPT x 1/4 HOSE MENDER	BRASS
101	PNEUMATIC REGULATOR ASSEMBLY (SUCTION)	...
102	PNEUMATIC REGULATOR ASSEMBLY (SUCTION)	610315 666501



NUM	DATE	DESCRIPTION	BY/PAR
		REVISIONS	

TITLE/TITRE:		WATER & AIR PIPING	
DESIGNED BY:	Equipe Conablast	SCALE:	1/8"=1'
DRAWN BY:		PROJECT:	13768
CHECKED BY:		DATE:	
APPROVED BY:		ISSUE:	
			P & W
			PLUMBER-C

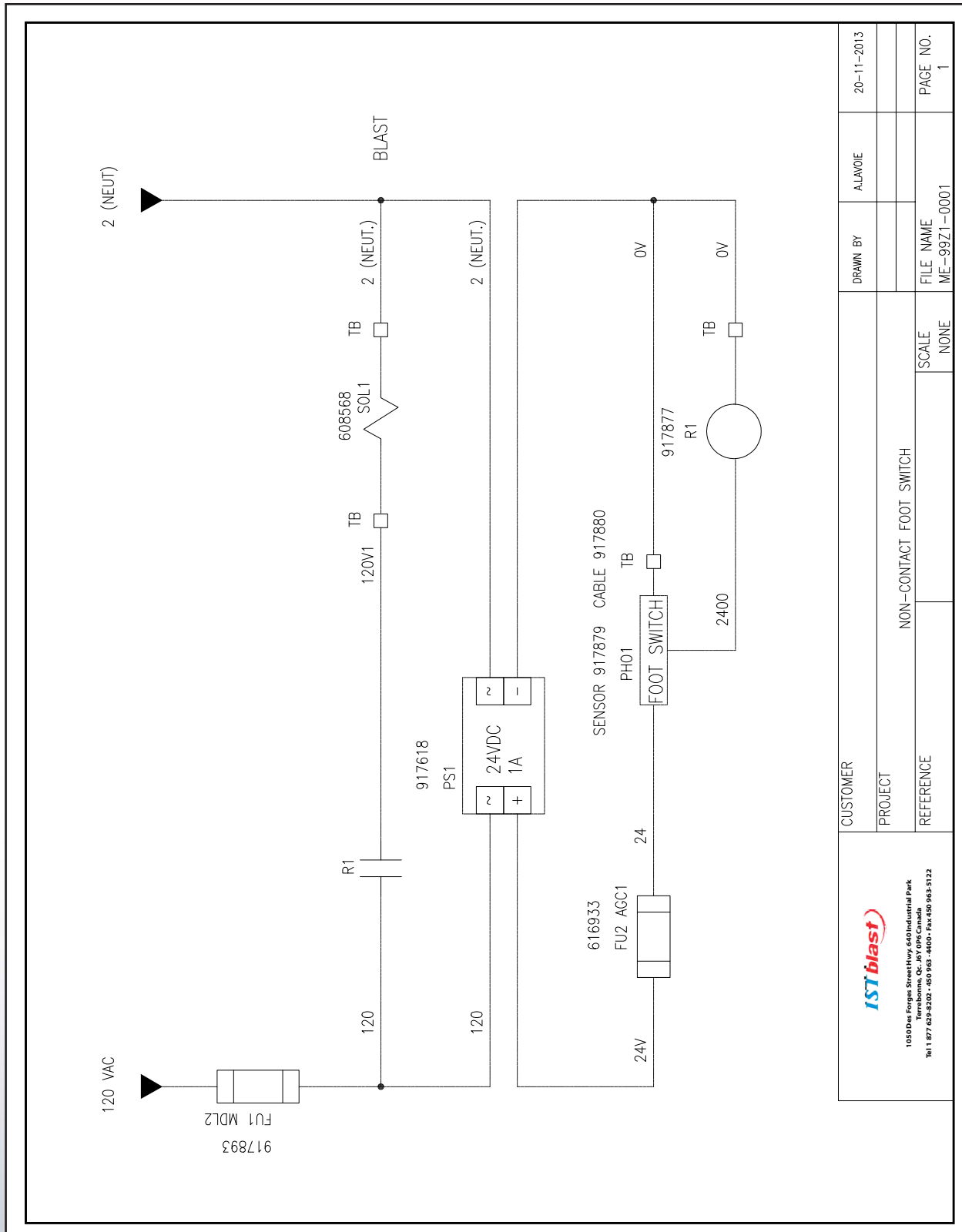
ELECTRICAL DIAGRAM



CUSTOMER	PPAD	DRAWN BY	ALMOE	DATE	06-02-2014
PROJECT	MDS WET BLAST	FILE NAME	MW-33B1-0005	SCALE	NONE
REFERENCE					PAGE NO. 1

1000 Forger Street Hwy 400 Industrial Park
 Tel 1 877 629-8202 • Fax 250 963-4400 • E-mail 250 963-5122

NO CONTACT FOOT PEDAL ELECTRICAL DIAGRAM



 10900 us Ensign Street Hwy, 460 Industrial Park Terrebonne, QC J8Y 0P6 Canada Tel 1 877 629-8202 - 460 963 -4400 - Fax 450 963-5122	CUSTOMER	ALAWOIE	20-11-2013
	PROJECT		
	REFERENCE	NON-CONTACT FOOT SWITCH	SCALE
		NONE	ME-9971-0001
			PAGE NO.
			1

LIQUID TANK

ITEM QTY	LISTE DE MATERIEL / MATERIAL LIST	DESCRIPTION	MAT'L

LIQUID LEVEL

VOLUME: 8 L.

COMPOSITION:
WATER - 6 L.
ABRASIVE - 2 L. (8 KG)

VIEW A

NO	DATE	DESCRIPTION	BY/PAR
REVISIONS			
GENERAL VIEW			
M3636-WET BLASTER			
DESIGNED BY	ANDREI	DATE	2004/01/14
DRAWN BY	ANDREI	SCALE	1:1
CHECKED BY		REV. NO	
VERIFIED BY		ISSUE/REV	
		3636-VB	929002-C

ISTblast

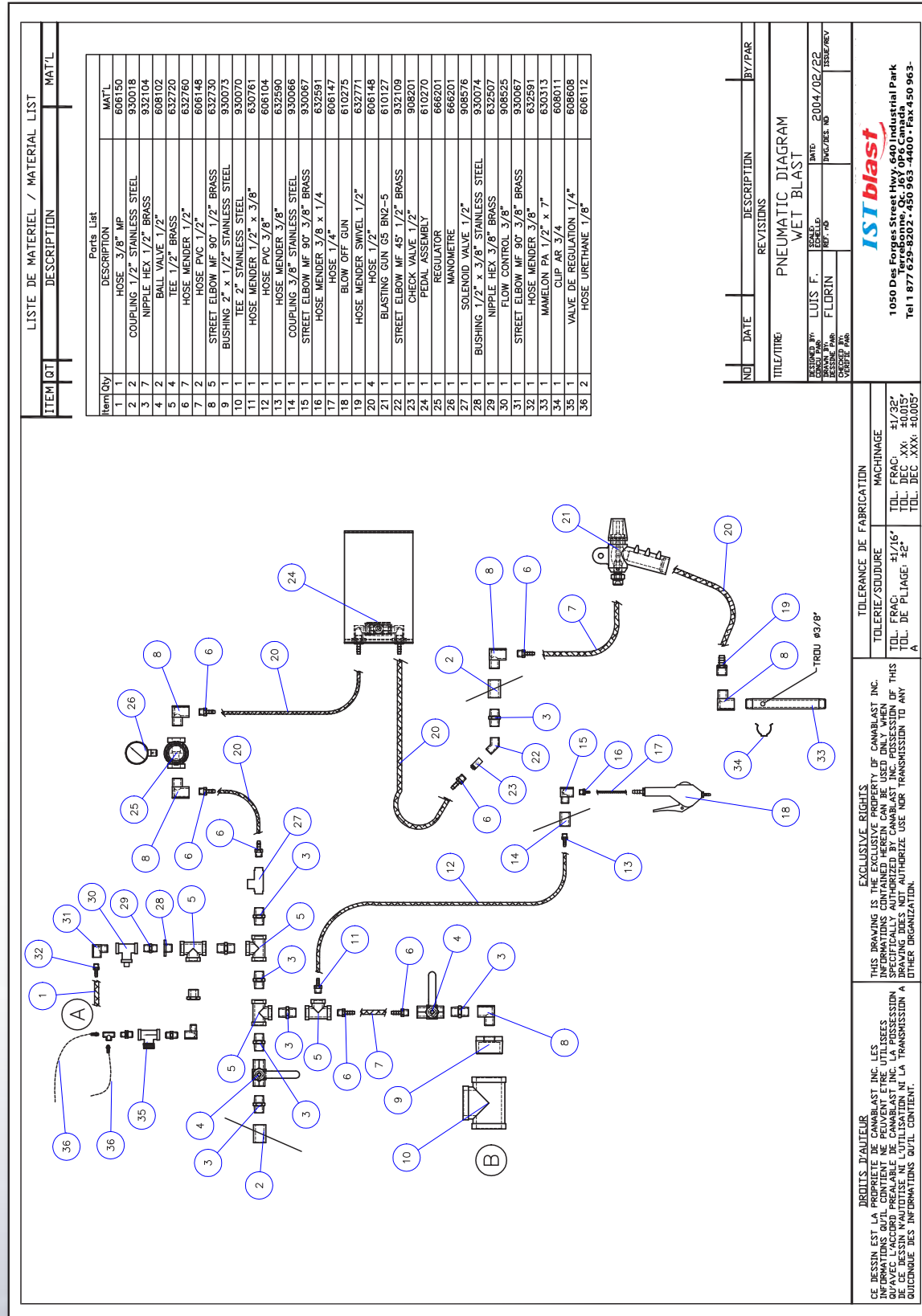
1050 Des Forges Street Hwy. 640 Industrial Park
Tel 1 877 625-8202 • 450 963 4400 • Fax 450 963-

TOLERANCE DE FABRICATION	MACHINAGE
TOLERIE/SOUDURE	TOL. FRAC. ±1/16"
TOL. FRAC.	TOL. DEC. XX. ±0.015"
TOL. DE PLOAGE: ±2°	TOL. DEC. XXX. ±0.005"
A	A

EXCLUSIVE RIGHTS
THIS DRAWING IS THE EXCLUSIVE PROPERTY OF CANABLAST INC. INFORMATION CONTAINED HEREIN CAN BE USED ONLY WHEN AUTHORIZED BY CANABLAST INC. THIS DRAWING DOES NOT AUTHORIZE USE NOR TRANSMISSION TO ANY OTHER ORGANIZATION.

DRONTS D'AUTEUR
CE DESSIN EST LA PROPRIETE DE CANABLAST INC. LES INFORMATIONS QUI SONT CONTENUES ICI NE PEUVENT ETRE UTILISEES SANS LA PERMISSION DE CANABLAST INC. CE DESSIN N'AUTORISE NI L'UTILISATION NI LA TRANSMISSION A QUICUNQUE DES INFORMATIONS QUI SONT CONTENUES ICI.

PNEUMATIC DIAGRAM



EXCLUSIVE RIGHTS
THIS DRAWING IS THE EXCLUSIVE PROPERTY OF CANABLAST INC. NO PARTS OR INFORMATION CONTAINED HEREIN CAN BE REPRODUCED OR TRANSMITTED IN ANY FORM OR BY ANY MEANS, ELECTRONIC OR MECHANICAL, WITHOUT THE WRITTEN PERMISSION OF CANABLAST INC. THIS DRAWING IS THE PROPERTY OF CANABLAST INC. NO PARTS OR INFORMATION CONTAINED HEREIN CAN BE REPRODUCED OR TRANSMITTED IN ANY FORM OR BY ANY MEANS, ELECTRONIC OR MECHANICAL, WITHOUT THE WRITTEN PERMISSION OF CANABLAST INC.

TOLERANCE DE FABRICATION
TOLERANCE DE FABRICATION: MACHINAGE
TOL. FRAC. ±1/32"
TOL. DEC. XX: ±0.015"
TOL. DEC. XXX: ±0.005"

NO	DATE	REVISIONS	BY/PAR
PNEUMATIC DIAGRAM			
WET BLAST			
DESIGNED BY	LUIS F.	SCALE	DATE: 2004/02/22
DRAWN BY	FLORIN	REV. NO	ISSUE/REV
CHECKED BY			
VERIFIED BY			

ISTblast
1050 Des Forges Street Hwy 640 Industrial Park
Terrebonne, QC J6Y 0P6 Canada
Tel 1 877 629-8202 • 450 963-4400 • Fax 450 963-

SEMI ELLIPTIC HEAD

ITEM	QTY	DESCRIPTION	MATERIAL
Parts List			
1	1	FLANGE	3/16 PL SS
2	1	CYLINDRE	11 GA SS
3	1	CONE	11 GA SS
50	1	DISQUE MELANGEUR	ALUMINIUM
51	1	COUVERCLE MELANGEUR	ALUMINIUM
52	2	GICLEUR MELANGEUR	ROS SS
53	1	MAMELON 2"NPT x 4"	930120
200	1	MAMELON 3/8" x 2 1/2" LG	930075
201	1	COUDE 90° FF 3/8" SS	930076
202	2	"TE" 2" GALVANISE	950043
203	2	MAMELON 2" GALVANISE	930090
204	1	REDUIT HEX 2" x 1" GALVANISE	930121
205	2	MAMELON 1" GALVANISE	930096
206	1	GATE VALVE 1" BRASS	608154
207	1	"TE" 1" GALVANISE	930122
208	1	DEMI RACCORD 2"	323516
209	1	RACCORD PA 3/4"	930045
210	1	BALL VALVE 2"	608107
211	1	ADAPTEUR 1" GALVANISE	630690

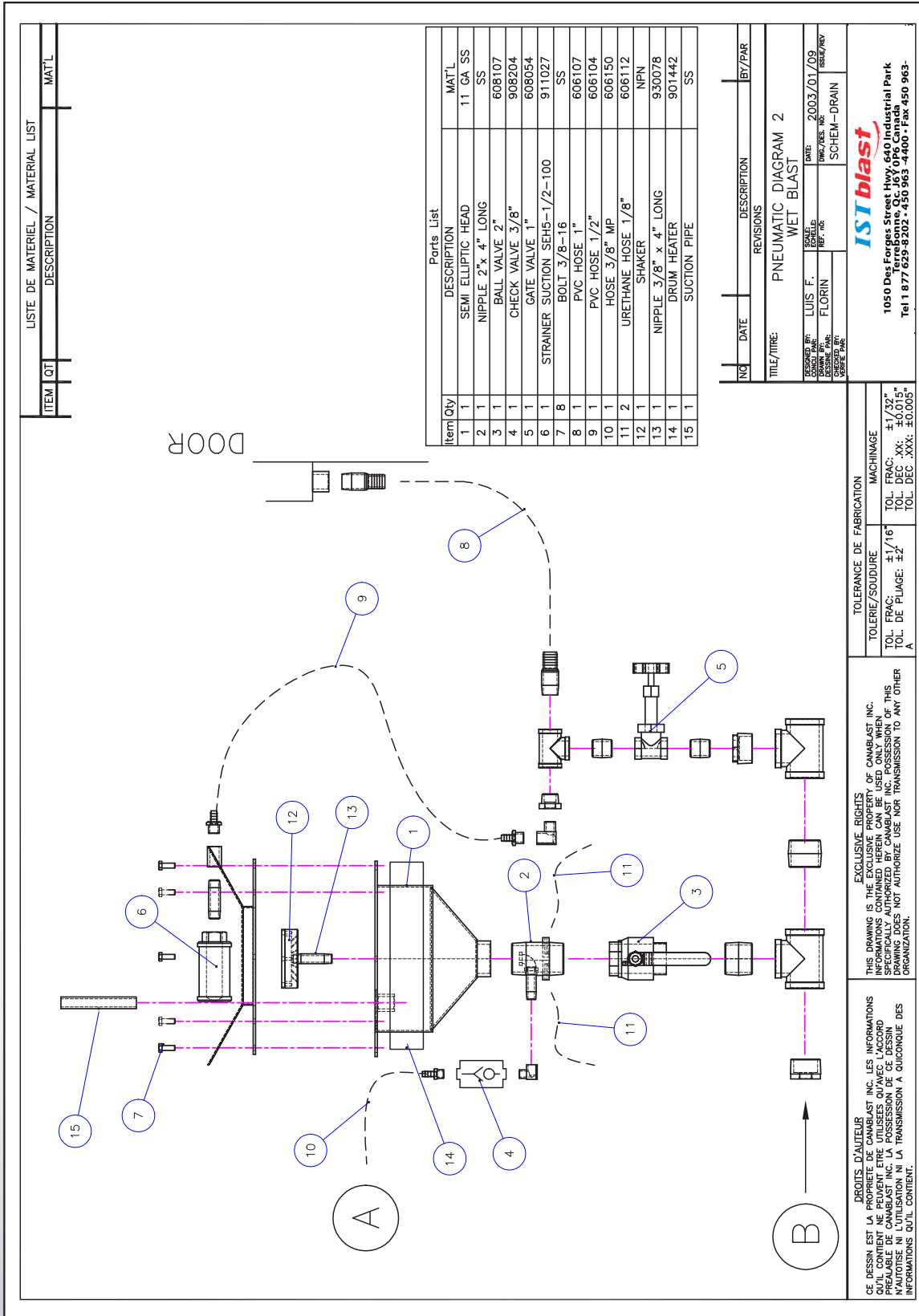
NO	DATE	DESCRIPTION	BY/PAR
REVISIONS			
ASSEMBLAGE			
TETE SEMIELIPTIQUE WB			
DESIGNEUR	ANDREI	DATE	2004/01/12
DESSIN PAR	ANDREI	PROGRES NO	
REVISEUR	ANDREI	REV. NO	3636-WB
DATE		REVISEUR	912121-D

TOLERANCE DE FABRICATION	
TOLERIE/SOUDURE	MACHINAGE
TOL. FRAC: ±1/16"	TOL. FRAC: ±1/32"
TOL. DE PLIAGE: ±2"	TOL. DEC. XX: ±0.015"
TOL. DEC. XXX: ±0.005"	TOL. DEC. XXX: ±0.005"

EXCLUSIVE RIGHTS:
THIS DRAWING IS THE EXCLUSIVE PROPERTY OF CANABLAST INC. INFORMATION CONTAINED HEREIN CAN BE USED ONLY WHEN SPECIFICALLY AUTHORIZED BY CANABLAST INC. POSSESSION OF THIS DRAWING DOES NOT CONSTITUTE AN AUTHORIZATION TO REPRODUCE OR TRANSMIT TO ANY OTHER ORGANIZATION.

DROITS EXCLUSIFS:
CE DESSIN EST LA PROPRIETE DE CANABLAST INC. LES INFORMATIONS QUI Y SONT CONTENUES NE PEUVENT ETRE UTILISEES QU'AVEC L'ACCORD PREALABLE DE CANABLAST INC. LA POSSESSION D'UN DESSIN NE CONSTITUE PAS LA TRANSMISSION D'UN DROIT NI LA PERMISSION A UN AUTRE ORGANISME D'UTILISER LES INFORMATIONS QUI Y SONT CONTENUES.

SEMI ELLIPTIC HEAD PNEUMATIC DIAGRAM



LISTE DE MATERIEL / MATERIAL LIST		
ITEM	QTY	DESCRIPTION
		MAT'L

Parts List		
Item Qty	DESCRIPTION	MAT'L
1	SEMI ELLIPTIC HEAD	11 GA SS
2	NIPPLE 2" x 4" LONG	SS
3	BALL VALVE 2"	608107
4	CHECK VALVE 3/8"	908204
5	GATE VALVE 1"	608054
6	STRAINER SUCTION SEH5-1/2-100	911027
7	BOLT 3/8-16	SS
8	PVC HOSE 1"	606107
9	PVC HOSE 1/2"	606104
10	HOSE 3/8" MP	606150
11	URETHANE HOSE 1/8"	606112
12	SHAKER	NPN
13	NIPPLE 3/8" x 4" LONG	930078
14	DRUM HEATER	901442
15	SUCTION PIPE	SS

NO	DATE	DESCRIPTION	BY/PAR
REVISIONS			
PNEUMATIC DIAGRAM 2			
WET BLAST			
DESIGNED BY	LUIS F.	DATE	2003/01/09
DRAWN BY	FLORIN	CHK/ISS. NR.	ISSUE/REV
CHECKED BY		REF. NR.	
SCALE		SCHEM-DRAIN	

ISTblast
1050 Dug Forges Street Hwy. 640 Industrial Park
Terrebonne, Q.C. J0P 6P6 Canada
Tel 1 877 625-9282 - 450 363 - 4400 - Fax 450 963-

TOLERANCE DE FABRICATION	
TOLERIE/SOUDURE	MACHINAGE
TOL. FRAC: ±1/16"	TOL. FRAC: ±1/32"
TOL. DE PLIAGE: ±2"	TOL. DEC. XX: ±0.015"
	TOL. DEC. XXX: ±0.005"

EXCLUSIVE RIGHTS
THIS DRAWING IS THE PROPERTY OF CANBLAST INC. NO REPRODUCTION OR TRANSMISSION OF ANY INFORMATION CONTAINED HEREIN CAN BE USED WITHOUT SPECIFICALLY AUTHORIZED BY CANBLAST INC. POSSESSION OF THIS DRAWING DOES NOT AUTHORIZE USE NOR TRANSMISSION TO ANY OTHER ORGANIZATION.

DROITS D'AUTEUR
CE DESSIN EST LA PROPRIETE DE CANBLAST INC. LES INFORMATIONS CONTENUES ICI NE PEUVENT ETRE REPRODUITES NI TRANSMISEES A UN TIERCE SANS LE PREALABLE DE CANBLAST INC. LA POSSESSION DE CE DESSIN N'AUTORISE NI L'UTILISATION NI LA TRANSMISSION A QUICUNQUE DES INFORMATIONS QU'IL CONTIENT.

