



BREATHABLE AIR SYSTEMS

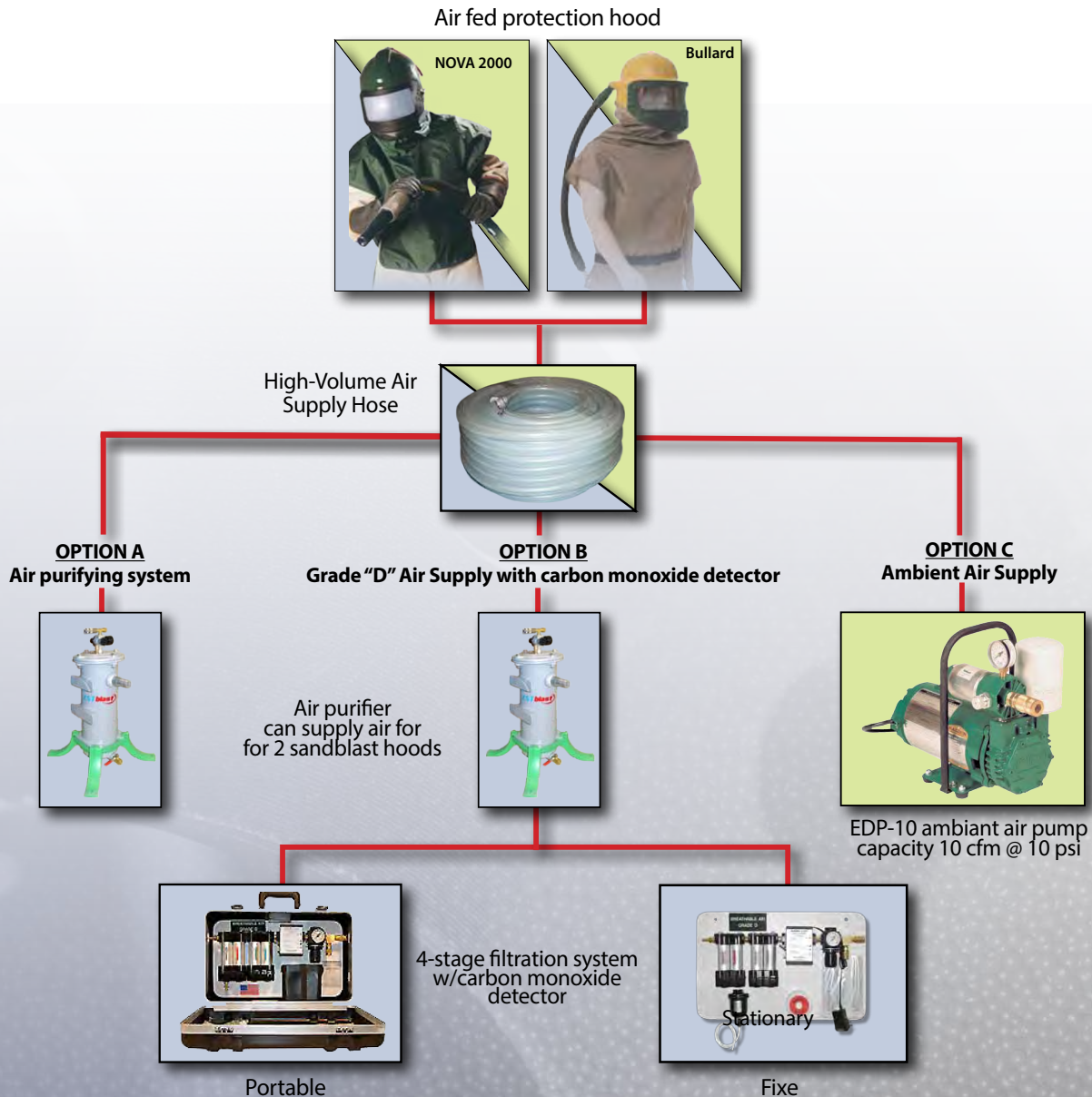
The airline respirator Series offer comfortable, reliable respiratory protection for abrasive blasters and painters. Our systems are NIOSH approved as Type C or CE Continuous Flow Class Respirator (Approval No. TC-19C-293).

Basically, there are three types of air feeding system to supply your air fed protective hood:

- **Option A - Air purifying system:** A Radex filtration system using a carbon filter and activated alumina will remove 98% of particles down to 0,5 micron size. Does not remove carbon monoxide or other gases from airlines.
- **Option B - Grade "D"* Air Supply with carbon monoxide detector:** A Radex filtration system combined with a 4-step filtration system will efficiently remove oil, dust, odors, organic vapors, water and other contaminants, and provide Grade "D" Air according to OSHA. This system is also equipped with a carbon monoxide detector and warning signal.
- **Option C- Ambient Air Supply:** A breathing air system using a room air pump model EDP-10 to supply ambient air to the hood. The pump is activated by an electric motor with a power of 3/4 hp and 10 cubic feet @ 10 lb / pc.

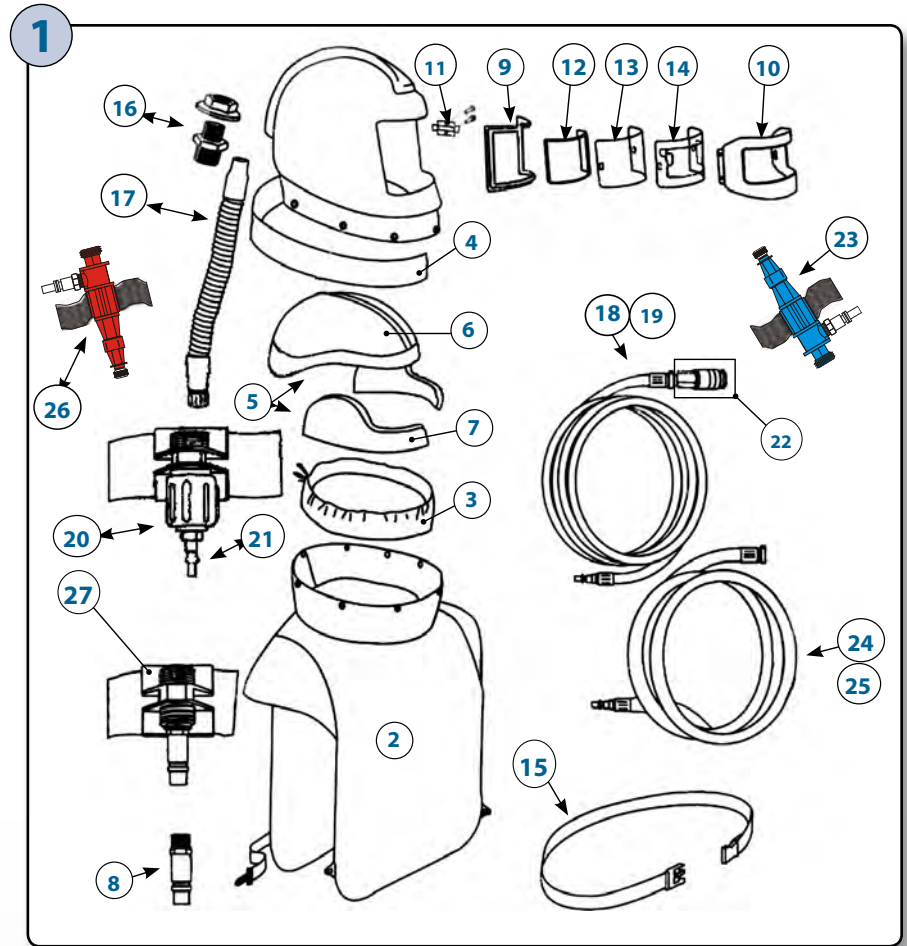
These three assemblies are provided with pressure regulator for controlling supplied air to blasting hood and are considered the safest means to provide quality breathing air to the operator.

* Compressed breathing air shall meet at least the requirements for Grade D breathing air described in ANSI/Compressed Gas Association Commodity Specification for Air, G-7.1-1989





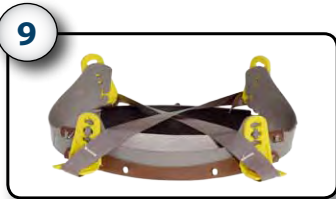
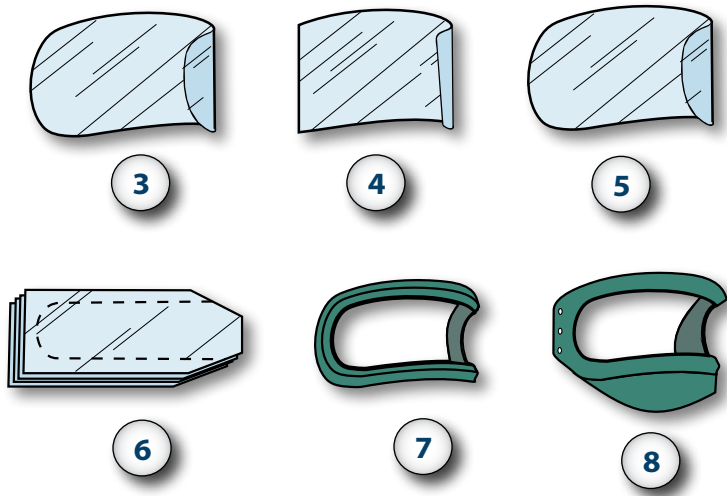
NOVA 2000 HOOD



#	STOCK	DESCRIPTION	#	STOCK	DESCRIPTION
1	603500	NOVA 2000 KIT	15	603521	BELT & LOOP
2	603520	NYLON CAPE 28	16	603522	AIR INLET KIT
3	603502	INNER SHUTTLE	17	603515	BREATHING HOSE
4	603503	CAPE STRIP	18	603523	AIR BREATHER HOSE 25' x 3/8"
5	603517	CONE FOR HAT & SIDE PADDING (LARGE)	19	603524	50' BREATHING AIR SUPPLY HOSE, 3/8"
6	603504	CONE FOR HAT	20	603516	FLOW CONTROL VALVE WITH BELT
7	603505	SIDE PADDING	21	603519	QUICK CONNECT 1/4" MNPT
8	603506	QUICK CONNECT 3/8" MNPT	22	603525	QUICK CONNECT 1/4" MNPT
9	603507	DOOR SEAL	23	603510	COLD AIR TUBE WITH MBSP THREAD & BELT
10	603508	VISOR	24	603526	AIR BREATHING HOSE 50' X 1/2"
11	603509	BRACKET & NUTSS	25	603527	AIR BREATHING HOSE 100' X 1/2"
12	603514	INNER VISORS (PACK OF 10)	26	603511	HOT AIR TUBE WITH MBSP THREAD & BELT
13	603512	OUTER VISORS (PACK OF 50)	27	603528	FLOW CONTROL VALVE 1/2"
14	603513	REMOVABLE VISORS (50 PAQUETS)	28		



BULLARD (88 VX) HOOD



1	603070	88VX BULLARD INCLUDE AIR FED HOOD, CAPE & BELT (2-11-15)
2	613211	Nylon cape (standard 28" length)
		Cape length 38"
	613237	Hibernia nylon cape (38" length)
3	613009	RPW6 inner shield (oval 4 1/2" x 12 3/4")
4	613010	RPW6 - outer shield (rectangular 5" x 14")
5	913004	RPW6 - outer shield oval (4 1/2" x 14")
6	631234	BH8/BH6 77LC perfor. visor shield (pack of 25)
7	613205	Window gasket including seal and visor
8	613254	Outer window frame kit

9	613132	Standard headband suspension
	613134	Ratchet headband suspension
10	613139	Chin strap
11	613226	Breathing tube only
12	613232	F30 1/2" belt adaptor
13	613229	Flow control valve and adaptor
14	613238	BH8/BH30 FA35 1/2" belt adaptor
15	613212	Belt
16	613235	Respiratory tube connector



HOT OR COLD AIR TUBES

Maximize worker comfort and increase productivity by cooling or heating breathable air respirator inlet.



1
Warms compressed breathing air coming into respirators by as much as 30°F (17°C). The NV4000-20 Hot Air Tube Assembly helps to maximize worker comfort and increase productivity when working in cold climates.

The NV4000-01 is manufactured from non toxic engineering plastics which are extremely robust and easily withstand the rigors of the workplace.

* Not for use with low pressure systems

2
Cools the breathing air coming into a respirator by as much as 32°F (18°C). The NV4000-01 Cold Air Tube Assembly helps to maximize worker comfort and increase productivity when working in warm climates

The NV4000-01 is manufactured from non toxic engineering plastics which are extremely robust and easily withstand the rigors of the workplace.

* Not for use with low pressure systems

OTHER TUBES ACCESSORIES



1	603510	COLD AIR TUBE WITH MBSP THREAD &
2	603511	HOT AIR TUBE WITH MBSP THREAD &
3	613155	COLD AIR TUBE "AC1000"
4	613233	COLD AND HOT AIR TUBE HC2400
5	613160	CONTROL VALVE AND MUFFLER

HIGH-VOLUME AIR SUPPLY

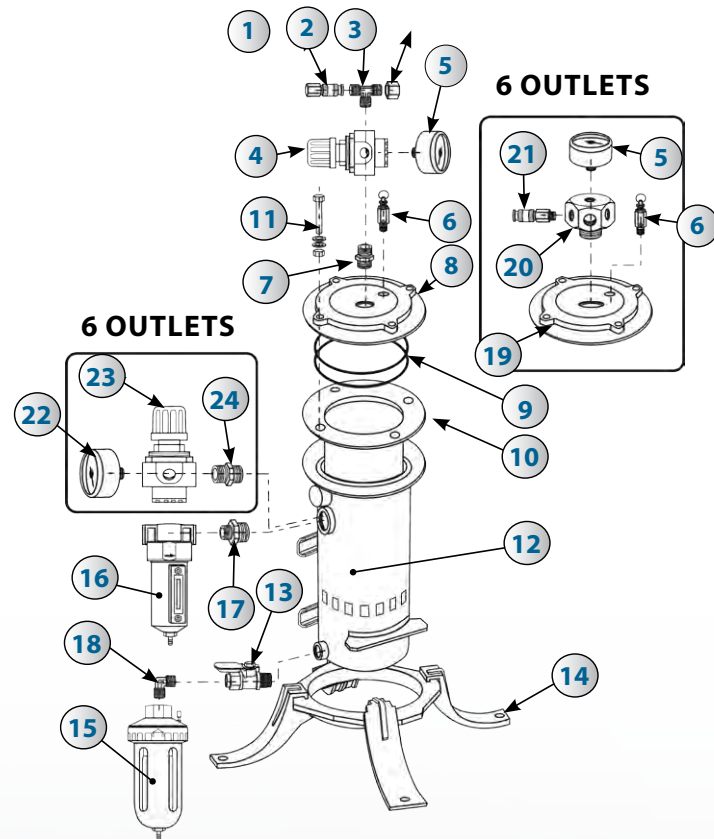


613144	25' START HOSE "ISTBLAST" W/COUPLINGS
606145	50' START HOSE "ISTBLAST" W/COUPLINGS
606142	50' EXTENSION HOSE "ISTBLAST" W/COUPLING
606143	100' EXTENSION HOSE "ISTBLAST" W/COUPLING
603526	50' - 1/2" HOSE W. COUPLINGS FOR AMBIENT AIR PUMP
603527	100' - 1/2" HOSE W. COUPLINGS FOR AMBIENT AIR PUMP



RADEX AIR PURIFIER

The Radex Air Purifier Model is designed to remove 98 % of particles down to 0.5 micron size. ISTblast breathing equipment purifier can be used in combination with other safeguards to supply cleaner air to airline respirators as well as many pneumatic tools and systems. Does not remove carbon monoxide or other gases from airlines.



#	STOCK	DESCRIPTION
A	603600	COMPLETE RADEX PURIFIER
1	603601	3/8" FEMALE QUICK CONNECT
2	603602	3/8" BRASS "T"
3	603603	3/8" BRASS PLUG
4	603604	PRESSURE REGULATOR (WITHOUT GAUGE)
5	603605	GAUGE
6	603606	SAFETY VALVE 125 PSI 1/4" NPT
7	603607	3/8" BRASS HEX. NIPPLE
8	603608	FILTER COVER
9	603609	"O"- RING, KIT OF 2
10	603050	FILTER CARTRIDGE

#	STOCK	DESCRIPTION
13	603613	1/4" NPT BRASS DRAIN VALVE
14	603614	BASE
15	603615	1/4" NPT AUTOMATIC DRAIN
16	603616	1/2" MIST FILTER, ASSEMBLED
17	603617	1" X 1/2" BRASS REDUCER NIPPLE
18	603618	1/4" BRASS ELBOW
19	603619	6 OUTLETS FILTER COVER
20	603620	6 OUTLETS MANIFOLD
21	603621	FITTINGS
22	603622	GAUGE
23	603623	HIGH FLOW REGULATOR
24	603624	CONNECTEUR 1", NPT



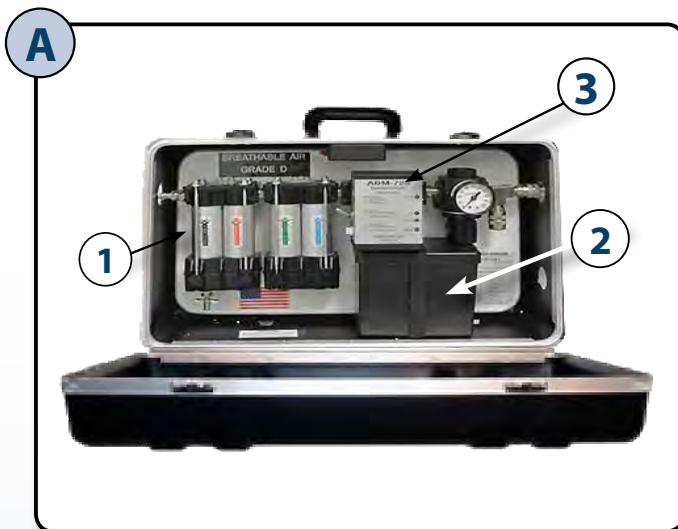
AIR RESPIRATOR SYSTEM 4-STAGE FILTRATION SYSTEM MODELS

Models 50 to 150 breathing systems outfitted with broad range monitor, four-stage filtration, and auto float drain, designed to provide 50 to 150 scfm of Grade D purified air from your existing compressed air supply.

Complete panel mounted systems available in stationary and portable versions. Rapidly ready to use: warm up purge cycle time of just one minute. Built in audible horn and warning lamps alert users if hazardous gases exceed preset OSHA limits.

FEATURES

- ✓ Compressed air option
- ✓ Designed to provide grade "D" air
- ✓ Accessory option : hood, mask, etc.



Portable



Stationnary

A	603116	50 cfm PORTABLE FILTRATION KIT
B	903104	50 cfm STATIONNARY FILTRATION KIT
1	603117	REPLACEMENT FILTER KIT
2	603123	RECHARGEABLE BATTERY
3	603118	CARBON MONOXIDE DETECTOR
*	603119	(NOT ILLUSTRATED) CALIBRATION KIT





AIR RESPIRATOR SYSTEM 4-STAGE FILTRATION SYSTEM MODELS (CONT'D)

The Model 50 Systems are designed to provide 50 SCFM of Grade "D" Breathable Air, from your existing compressed air supply. These complete systems are panel mounted and available in both stationary and portable versions. All Model 50 Systems are outfitted with a broad range monitor, four-stage filtration, and auto float drain. With warm up purge cycle time of only one minute, these systems are ready, quickly. Built in warning lamps and audible horn alert users if hazardous gases exceed the preset OSHA limits.

MODEL 50-2

Is designed to support two supplied air respirators at the same time. This affordable panel mounted system comes complete with two output quick couplers. The pressure regulator is user set in the NIOSH approved respirator guidelines. These systems are available with electronic air powered audible horns.



MODEL 50-4

Is designed to support up to four supplied air respirators at the same time. This affordable panel mounted system comes complete with a larger pressure regulator and four output quick couplers, manifold mounted. These systems are available with electronic or air powered audible horns.

MODEL 50-P

Is available in two and four output versions. These affordable portable systems are mounted in a lockable, rugged case made of strong materials to withstand rough handling. These battery-operated systems can provide service whenever compressed air is available. These systems are available with electronic, or air powered audible horns. Both internal and external indicator lamps are a standard feature.





AIR RESPIRATOR SYSTEM 4-STAGE FILTRATION SYSTEM MODELS (CONT'D)

The **Model 80 Systems** are designed to provide 80 SCFM of Grade "D" Breathable Air, from your existing compressed air supply. These complete systems are panel mounted and are available with two types of on-board monitors to choose from. Both monitors provide a warm up purge cycle time of only one minute. The four-stage filtration and automatic moisture discharger are standard. Built in warning lamps and audible horn alert users if hazardous Bases exceed preset OSHA limits.

MODEL 80-B

is available with either no output quick couplers, for onsite plumbing, or up to eight output quick couplers. This "B" style monitor system provides broad range protection, with both audible horn and analog display. User friendly indicator lamps will advise operator the status of the system at a glance.



MODEL 80-E

is available with either no output quick couplers, for on site plumbing, or up to eight output quick couplers. This "E" style monitor system provides electro chemical cell sensor technology, with both audible horn and digital display. Userfriendly indicator lamps will advise operator the status of the system at a glance.



AIR RESPIRATOR SYSTEM 4-STAGE FILTRATION SYSTEM MODELS (CONT'D)

The Model 150 Systems are designed to provide 150 scfm of Grade "D" Breathable Air, from you existing compressed air supply. These complete systems are panel mounted and are available with two types of on-board monitors to choose from. Both monitors provide a warm up purge cycle time of only one minute. The four-stage filtration and automatic moisture discharge are standard. Built in warning lamps and audible horn alert users if hazardous gases exceed the present OSHA limits.

MODEL 150-B

System is available with either no output quick couplers, for on-site plumbing, or up to twelve output quick coupler s- This "B" style monitor system provides broad range protection, with both audible horn and analog display. User-friendly indicator lamps will advise operator the status of the system at a glance.



MODEL 150-E

Is available with either no output quick couplers. for on-site plumbing, or up to twelve output quick couplers. This "E" style monitor system provides electro chemical cell sensor technology, with both audible horn and digital display- Userfriendly indicator lamps will advise operator the status of the system at a glance.

OSHA & CSA REGULATIONS :

This table will show the maximum allowable contaminant levels as regulated by OSHA and CSA. All ISTblast Services Company's systems are designed to comply with these regulations.

CONTAMINANT	OSHA	CSA
Carbon Monoxide (CO) by volume	10 ppm	5 ppm
Carbon Dioxide (CO2) by volume	1000 ppm	500 ppm
Hydrocarbons (condensed) by weight	5 mg/m ³	1 mg/m ³
Hydrocarbons (gaseous) by volume	N/A	55 ml/m ³
Odor	Slight	not detectable



AIR RESPIRATOR SYSTEM 4-STAGE FILTRATION SYSTEM MODELS (CONT'D)

Carbon monoxide (CO) when compressed, becomes a very toxic air contaminant. It reduces the ability of the red blood cells to carry the necessary oxygen to the body tissues. This potentially dangerous condition is extremely hazardous. When you consider that carbon monoxide is absorbed twice as fast as oxygen. This is true even when the supply of oxygen is abundant. Air breathing air compressors can intake carbon monoxide and other contaminants. Therefore, it is imperative and required that air supplied breathing air be properly monitored.



MODEL 50 SL SYSTEM

is a complete panel mounted system. This system is designed to provide a single user with Grade "D" Breathable Air, and comes with a 35' single line hose assembly that includes a 54" tool hose. The broad range monitor along with the four-stage filtration and auto float drain are standard features. This system is also available with a 50' single line hose assembly.



THE P-20, PABU

is a belt-mounted filter and monitor system designed to provide Grade "D" Breathable Air protection for one person. This lightweight unit works in conjunction with clean compressed air. The built in pressure regulator and gauge shows the user to set the appropriate pressure for a NIOSH approved respirator. A 54" tool hose is shipped with the unit to show for a single line hose system.

THE PAINTERS CHOICE

One person Unit comes in kit form. This kit allows the user to complete an already existing compressed air filter system to take clean spray air and filter and monitor for Grade "D" Breathable Air. This kit comes complete with filters, monitor, air sampling fittings installation instructions and a 35' single line hose assembly.



MONITORS

are available for specific applications. We offer a complete line of broad range and electro chemical cell monitors. All monitors come complete with both audible and visual alarms. These monitors can be used to provide the required monitoring for supplied air breathing systems. Air sample kits to connect the monitors to the filtered air supply are available. Monitors are available to operate with either 110 V AC or 12 V DC power supply.



FILTER SYSTEMS

for pre filtration and breathing air filtration are available in 50 SCFM, 80 SCFM, and 150 SCFM sizes. As a part of the Your System...Your Way products, we call offer custom filters to fill specific needs. Standard filters are designed to work with the needs of air



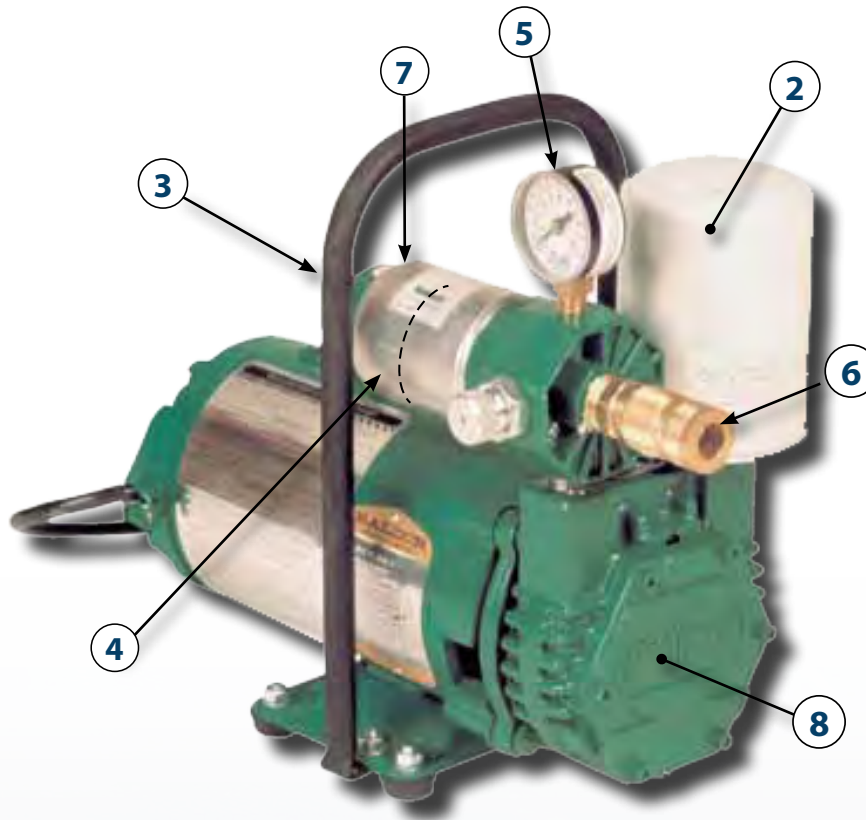
YOUR SYSTEM... YOUR WAY!!

The Your System... Your Way products allow the end user to design a custom system to fit a specific need or situation. These products can be selected as needed to put together a complete system, or start with components and then add to them as time and money permit. Also, these products can be used to complete a system that does not currently meet the required OSHA standards. Products are available in 50 SCFM, 80 SCFM, and 150 SCFM sizes. Total flexibility with these products will make it possible to provide the right equipment for almost every situation.



EDP-10 AMBIENT AIR PUMP

EDP-10 pump transfers ambient air from a clean air location to workers wearing C or CE type continuous flow supplied-air respirator hoods or tight-fitting half or full face masks, to ensure breathable air at all times.



1	603101	COMPLETE EDP-10 PUMP
2	603152	INLET FILTER
3	603150	OUTLET FILTER
4	613284	"O" RING (NOT ILLUSTRATED)
5	603156	GAUGE
6	603153	QUICK CONNECT COUPLER
7	613281	FILTER BOWL
8	603175	SERVICE KIT (NOT ILLUSTRATED)



ABOUT THE COMPANY

WHO WE ARE

IST is a leading industrial manufacturer of standard and custom engineered equipment for the surface treatment industry and the solvent recycling industry.

MISSION

IST is dedicated to being an innovative and trusted supplier in the conception, fabrication and distribution of surface treatment equipment and recycling equipment.

The products, technologies and industry expertise of IST are used in a wide range of manufacturing and industrial applications, including but not limited to :

- General Manufacturing
- Industrial Equipment
- Metal forming
- Aerospace and Aviation
- Rail and Transit
- Marine
- Automotive
- Petroleum
- Flexography (labelling) & Lithography
- Wood finishing
- Power & Energy
- Pharmaceutical

