



DUST COLLECTOR

SERIE DC/ DCM 100 to 330



Shown : DCM type

- **Warranty**
- **Safety**
- **Operation**
- **Service Parts**
- **Accessory Information**
- **Registration Form**



INSTRUCTION MANUAL



TABLE OF CONTENTS

	Page
INTRODUCTION.....	3
NOTICE TO PURCHASERS AND USERS OF OUR PRODUCTS AND THIS INFORMATIONAL MATERIAL.....	4
USE AND EQUIPMENT MAINTENANCE.....	5
GENERAL SAFETY RULES – PERSONALSAFETY – UNIT USE AND.....	5
PERSONAL SAFETY	5
MUFFLER (OPTIONAL).....	6
INSTALLATION.....	6
INSTALLATION.....	7
INSTALLATION (CON'D).....	8
MAINTENANCE	8
MAINTENANCE (CON'D).....	9
SCHEMATIC OF DC/DCM MODEL.....	10
SCHEMATIC OF INTERIOR OF DCM / DC.....	11
SCHEMATIC OF ELECTRIC BOX AND INTERIOR OF DC/DCM.....	12
SPARE PARTS FOR DC 100 / DCM 100.....	13
SPARE PARTS FOR DC 160 / DCM 160.....	13
SPARE PARTS FOR DC 230 / DCM 230	14
SPARE PARTS FOR DC 330 / DCM 330	14
ISTBLAST LIMITED WARRANTY	16



INTRODUCTION

Welcome to the ISTblast® family of sandblasting products. This booklet contains helpful information and acquaints you with the operation and maintenance of your equipment. Please read carefully and follow our recommendations to assure trouble free operation. If you have any questions, please do not hesitate to contact your distributor or our technical service.

1. Carefully inspect the shipping carton for any signs of transport damage. The damage to the carton often indicates possibility of transport damage to the equipment inside.
2. Carefully remove your ISTblast dust collector from the shipping carton and skid.
3. Check your equipment immediately to ensure that it is free of transport damage. Report any transport damage to the carrier without delay for possible claim procedures. ISTblast is not responsible for damage to equipment after it leaves our warehouse.
4. Check the equipment received and compare it with the parts you have received. If any parts are missing, contact the supplier you purchased the equipment from.

Before operating the ISTblast dust collector, read this Instruction Manual completely. All ISTblast products are engineered and manufactured to the highest performance standards and have been subjected to detail testing before shipment from the factory.



NOTICE TO PURCHASERS AND USERS OF OUR PRODUCTS AND THIS INFORMATIONAL MATERIAL

The products described in this material, and the information relating to those products, is intended for knowledgeable, experienced users of abrasive blasting equipment.

No representation is intended or made as to the suitability of the products described herein for any particular purpose of application. No representations are intended or made as to the efficiency, production rate, or the useful life of the products described herein.

Any estimate regarding production rates or production finishes are the responsibility of the user and must be derived solely from the user's experience and expertise, and must not be based on information in this material.

The products described in this material may be combined by the user in a variety of ways for purposes determined solely by the user. No representations are intended or made as to the suitability or engineering balance of the combination of products determined by the user in his selection, nor as to the compliance with regulations or standard practice of such combinations of components or products.

It is the responsibility of the knowledgeable, experienced users of the products mentioned in this material to familiarize themselves with the appropriate laws, regulations and safe practices that apply to these products, equipment that is connected to these products and materials that may be used with these products.

It is the responsibility of the user to insure that proper training of operators has been performed and a safe work environment is provided.

Our company is proud to provide a variety of products to the abrasive blasting industry, and we have confidence that the professionals in our industry will utilize their knowledge and expertise in the safe efficient use of these products.



WARNING



« READ ALL INSTRUCTIONS » Failure to follow the SAFETY RULES identified by a BULLET (○) symbol listed BELOW and other safety precautions may result in serious personal injury.

« SAVE THESE INSTRUCTIONS »

GENERAL SAFETY RULES

- **KEEP WORK AREA CLEAN.**
- **KEEP CHILDREN AWAY.** Do not let visitors come in contact with the equipment. All visitors should be kept away from the work area.

PERSONAL SAFETY

- **GUARD AGAINST ELECTRIC SHOCK.** Non-skid footwear is recommended where damp or wet ground may be encountered. A ground fault circuit interrupter protected power line must be used for these conditions.
- **DRESS PROPERLY.** Do not wear loose clothing or jewelry. They can be caught in the moving parts. Wear protective hair covering to contain long hair.
- **USE SAFETY EQUIPMENT. WEAR SAFETY GOGGLES** or glasses with side shields.
- **WEAR A DUST PROOF MASK.**
- **STAY ALERT. USE YOUR COMMON SENSE.** Concentrate on what you are doing. Do not operate the unit when you are tired or under the influence of drugs or alcohol.
- **DO NOT OVERREACH.** Keep proper footing and balance at all times.

USE AND EQUIPMENT MAINTENANCE

- **BEFORE CONNECTING THE UNIT** to an electric current, make sure that the current is the same as that indicated on the identification plate of the collector. An electric current higher than indicated that could seriously injure the user and also damage the collector. If you have any doubts, do not connect the unit.
- **DO NOT FORCE THE EQUIPMENT.** It will perform better and more safely if it performs his duties the way it was designed.
- **USE OF ANY OTHER ACCESSORIES** not specified in this manual may be dangerous.
- **DISCONNECT THE UNIT** on its maintenance.
- **DO NOT ALTER OR IMPROPERLY USE THE UNIT.** These units are precision equipment. Alteration unspecified or modification can lead to a dangerous situation. Only a qualified technician should make all repairs (+), whether electrical or mechanical. Contact your nearest repair ISTblast service. Use only ISTblast original parts, the use of other parts carries a risk.



INSTALLATION

1. Make sure your dust collector is installed level, on a solid surface. Do not put it on a wood floor or rubber without first giving a grounding.
2. For your dust collector DCM model, an electrical connection is required. Consult an electrician.
3. For dust collectors having the dust barrel option, make sure the barrel is placed under the dust collector and securely connected to it.
4. For electric motors operating on 3 phases, ensure the rotation will be the same as that indicated by the arrow red and black on the motor casing.
5. For dust collectors equipped with **a muffler option** you must install it directly to the air outlet of the fan. Simply bolt it on the adapter. To ensure right air circulation, it is essential to keep 18 inches of clearance in front of the air outlet of the muffler.

MUFFLER (OPTIONAL)



Horizontal muffler

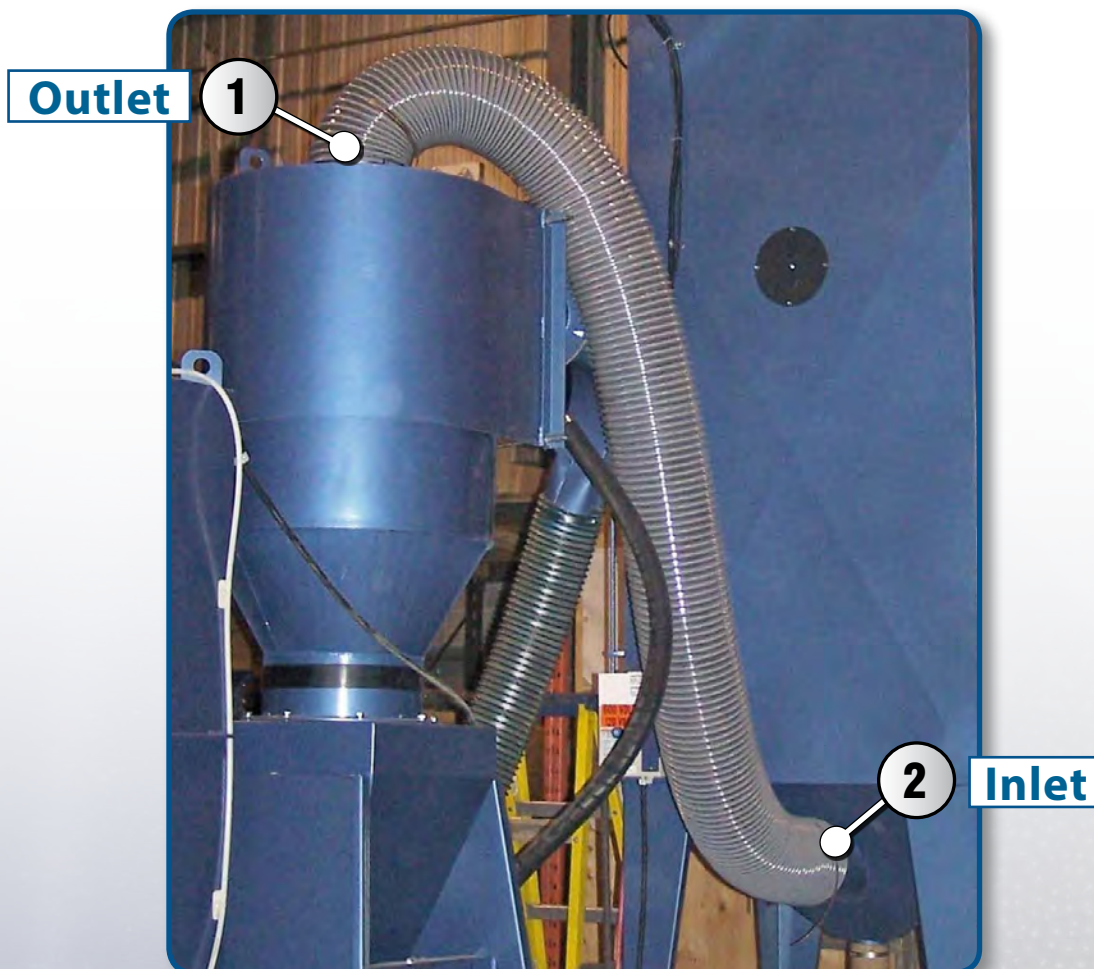


Vertical muffler



INSTALLATION

1. Make sure the equipment is leveled and well grounded. Do not place on a wooden floor or a rubber mat, unless a ground wire has been installed. Check with a qualified electrician.
2. If your dust collector is a "DC" model (without motor), please go to step 4 "DCM" models, with electric motor, requires wiring. Check with a qualified electrician.
3. For 3 phases electric motor, make sure that the rotor's direction is the same as the black and red arrow located on the motor's case.
4. For dust collector with the dust collecting drum option, make sure that the drum is properly located under the dust collector and that it has been correctly secured to it.
5. Sound silencer (muffler) (optional) is to be installed directly to the air outlet on top of the dust collector. Use the screws included with the silencer adaptor. To allow sufficient air circulation, be sure to have at least 18 inches of room around air outlet or muffler.
6. The dust collector should be located on a leveled area near the back of the cabinet, at the right side. Attach one end of the corrugated discharge hose to the outlet of the reclaimer (1) and the other end to the inlet located at the bottom of the dust collector (2). Secure both ends with the supplied clamps.

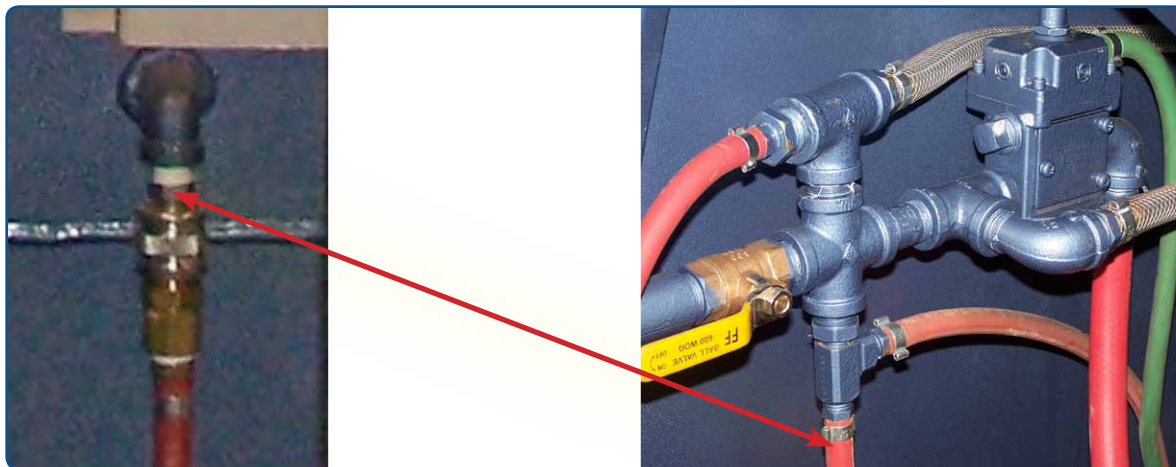


7. Connect dust collector power supply cord to standard 120 Volts (DCM 100 model only) and 600 Volts (DCM 160 / 230 / 330 models)



INSTALLATION (CON'D)

8. Connect to air supply



All electrical connections to the ISTblast equipment should be made by a qualified electrician and must adhere to the codes, standards, and procedures specified by the authority having jurisdiction.

The customer is responsible for providing appropriate disconnecting means adjacent to the equipment for each incoming power circuit.

MAINTENANCE

1. For the first two weeks of use, you should not shake the dust collector's bags. This will allow the dust to create a thin layer on the inside of the bag, increasing the filtering efficiency. It also explains why new bags may leak for the first hours of use.
2. Bags cleaning

- a. For DC 50 dust collector, shake the bags manually with the handle on the side of the equipment (**picture 1**).

Picture 1



- b. For DC/DCM 100, 160, 230, 330, you need an 80 psi maximum air supply for the standard, push button, pneumatic dust bag shaker of your equipment. Your air supply must be coupled to the air inlet with a 1/4 inch male coupling. Just press (more or less 10 times) the button on the side of the service door (**picture 2**).

Picture 2





MAINTENANCE (CON'D)

c. If your dust collector is equipped with the automatic shaker option (part number 601429) 120 volts or (part number 601427) 600 volts, the action will occur automatically at motor's shut down

2. Remove dust from the dust collector on a regular basis. Before opening the door, make sure to have a container under the trap to collect the dust. **(picture 3)**



Picture 3

If you are equipped with the dust drum option simply open the lid with the ring's lever **(picture 4)** and empty dust.



Picture 4

3. Never wash dust bags. If you have to clean them, use compressed air only, blowing from the outside to the inside of the bag (the opposite would clog the bag's pores and make it unusable). Replace torn bags as needed. For replacement parts, see diagrams and parts lists at pages 11 to 18.

IMPORTANT : Bag's shacking should never be done while the electric motor is running. Always wait for complete stop of electric motor to avoid bag's tearing.



SCHEMATIC OF DC/DCM MODEL



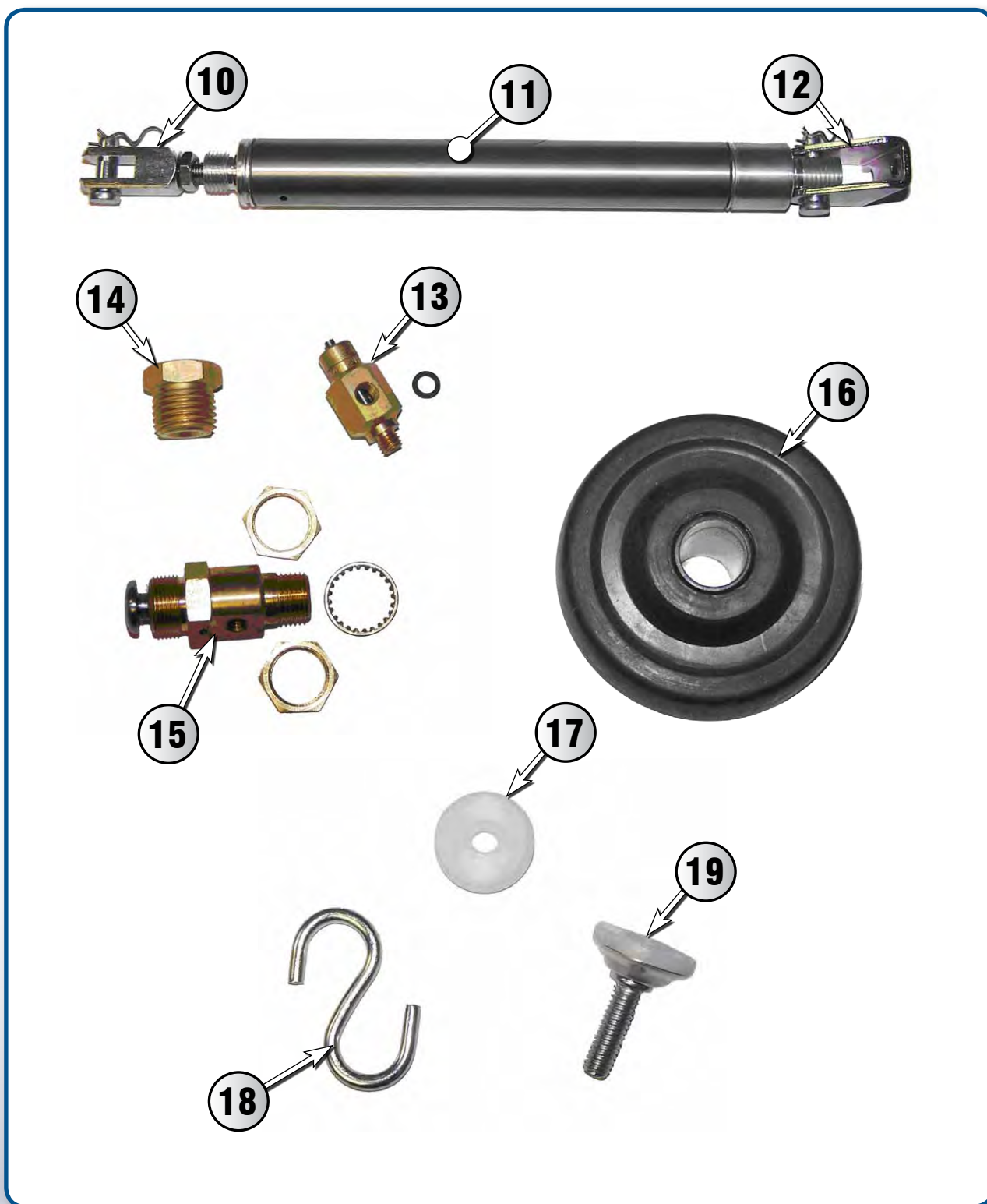
Front side



Back side



SCHEMATIC OF INTERIOR OF DCM / DC





SCHEMATIC OF ELECTRIC BOX AND INTERIOR OF DC/DCM



Non-standard voltage is available



SPARE PARTS FOR DC 100 / DCM 100

#	STOCK	DESCRIPTION (ALL SOLD PER FOOT OR PER UNIT)	#	STOCK	DESCRIPTION (ALL SOLD PER FOOT OR PER UNIT)
1	616313	1 hp 120 V motor (DCM 100 only) Standard model : If different, contact your distributor.	10	608406	Clevis rod
2	610526	1 hp impeller (DCM 100 only)	11	608405	3/4" Ø x 3" stroke cylinder
3	NPN	Name plate	12	608407	Bracket for cylinder
4	608508	Pneumatic shaker button	13	608408	Flow adjust 10-32
5	NPN	Air inlet (quick connect 1/4" M # 607222, & 1/4" F # 607219)	14	608409	1/4" adaptor
5A	606112	Urethane hose 1/8"	15	608508	Pneumatic shaker button
6	601371	Dust trap	16	619005	2" wheel
6A	618305	1/2" x 1" self-adhesive rubber foam (sold per foot)	18	601309	"S" hook
7	610280	8" adjustable air inlet	21	616575	Electric cable
8	618318	1/4" x 1/2" self-adhesive rubber foam	22	616405	Male plug 15A 125V 2P 3F
9	As cabinet	Dust conveying hose, sold per foot (Ø in accordance with cabinet)	23	601316	DB 6 hp dust bags (Qty : 16)
9A	As cabinet	Clamp	24	618306	1/2" x 1/2" self-adhesive rubber foam
9B	601429	120 V Automatic shacker (DCM 100)	25	610287	Complete door handle
			26	610223	Door latch
			27	606112	1/8" Ø urethane hose

SPARE PARTS FOR DC 160 / DCM 160

#	STOCK	DESCRIPTION (ALL SOLD PER FOOT OR PER UNIT)	#	STOCK	DESCRIPTION (ALL SOLD PER FOOT OR PER UNIT)
1	616324	2 hp 575 V motor (DCM 160 only) Standard model : If different, contact your distributor.	10	608406	Clevis rod
2	610527	2 hp impeller (DCM 160 only)	11	608405	3/4" Ø X 3" stroke cylinder
3	NPN	Name plate	12	608407	Bracket for cylinder
4	608508	Pneumatic shaker button	13	608408	Flow adjust 10-32
5	NPN	Air inlet (quick connect 1/4" M # 607222, & 1/4" F # 607219)	14	608409	1/4" adaptor
5A	606112	Urethane hose 1/8"	15	608508	Pneumatic shaker button
6	601371	Dust trap	16	619005	2" wheel
6A	618305	1/2" x 1" self-adhesive rubber foam (sold per foot)	18	601309	"S" hook
7	610280	8" adjustable air inlet	21	616575	Electric cable
8	618318	1/4" x 1/2" self-adhesive rubber foam	22	616405	Male plug 15A 125V 2P 3F
9	As cabinet	Dust conveying hose, sold per foot (Ø in accordance with cabinet)	23	601316	DB 6 hp dust bags (Qty : 16)
9A	As cabinet	Clamp	24	618306	1/2" x 1/2" self-adhesive rubber foam
9B	601427	600 V Automatic shacker (DCM 160)	25	610287	Complete door handle
			26	610223	Door latch
			27	606112	1/8" Ø urethane hose



SPARE PARTS FOR DC 230 / DCM 230

#	STOCK	DESCRIPTION (ALL SOLD PER FOOT OR PER UNIT)
1	616332	3 hp 575 V (DCM 230 only) Standard model : If different, contact your distributor.
2	610528	3 hp impeller (DCM 230 only)
3	NPN	Name plate
4	608508	Pneumatic shaker button
5	NPN	Air inlet (quick connect 1/4" M # 607222, & 1/4" F # 607219)
5A	606112	Urethane hose 1/8"
6	601371	Dust trap
6A	618305	1/2 " x 1 " self-adhesive rubber foam (sold per foot)
7	610280	8" adjustable air inlet
8	618318	1/4" x 1/2" self-adhesive rubber foam
9	As cabinet	Dust conveying hose, sold per foot (Ø in accordance with cabinet)
9A	As cabinet	Clamp
9B	601427	600 V Automatic shaker (DCM 160)
10	608406	Clevis rod

#	STOCK	DESCRIPTION (ALL SOLD PER FOOT OR PER UNIT)
11	608405	3/4" dia. x 3" stroke cylinder
12	608407	Bracket for cylinder
13	608408	Flow adjust 10-32
14	608409	1/4" adaptor
15	608508	Pneumatic shaker button
16	619005	2" wheel
18	601309	"S" hook
20	617063	Electric box
20	617068	3 hp overload
21	616575	Electric cable
22	616405	Male plug 15A 125V 2P 3F
23	601316	DB 6 hp dust bags (Qty : 25)
24	618306	1/2" x 1/2" self-adhesive rubber foam
25	610287	Complete door handle
26	610223	Door latch
27	606112	1/8 " Ø urethane hose

SPARE PARTS FOR DC 330 / DCM 330

#	STOCK	DESCRIPTION (ALL SOLD PER FOOT OR PER UNIT)
1	616340	5 hp 575 V motor (DCM 330 only) Standard model : If different, contact your distributor
	616339	5 hp 480 V motor
2	610529	5 hp impeller (DCM 330 only)
3	NPN	Name plate
4	608508	Pneumatic shaker button
5	NPN	Air inlet (quick connect 1/4" M # 607222, & 1/4" F # 607219)
5A	606112	Urethane hose 1/8"
6	601371	Dust trap
6a	618305	1/2 " x 1 " self-adhesive rubber foam (sold per foot)
7	610280	8" adjustable air inlet
8	618318	1/4" x 1/2" self-adhesive rubber foam
9	As cabinet	Dust conveying hose, sold per foot (Ø in accordance with cabinet)
9A	As cabinet	Clamp
9B	601427	600 V Automatic shaker (DCM 160)

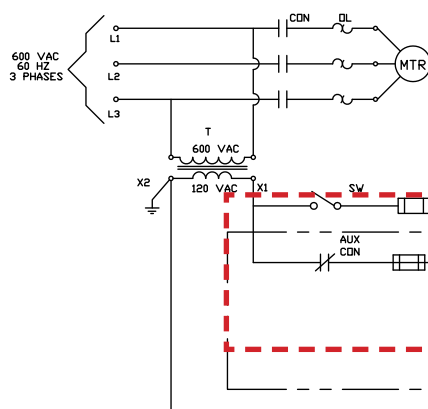
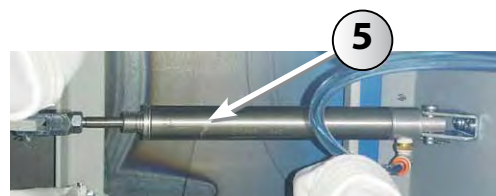
#	STOCK	DESCRIPTION (ALL SOLD PER FOOT OR PER UNIT)
10	608406	Clevis rod
11	608405	3/4" dia. x 3" stroke cylinder
13	608408	Flow adjust 10-32
14	608409	1/4" adaptor
15	608508	Pneumatic shaker button
16	619005	2" wheel
18	601309	"S" hook
20	617063	Electric box
	617067	5hp overload for 575 V motor
	617072	Overload for motor 480 V
21	616575	Electric cable
22	616405	Male plug 15A 125V 2P 3F
23	601308	DB 9 hp dust bags (Qty: 36)
24	618306	1/2" x 1/2" self-adhesive rubber foam
25	610287	Complete door handle
26	610223	Door latch
27	606112	1/8 " Ø urethane hose



ELECTRICAL SHAKER (OPTIONAL) INSTALLATION



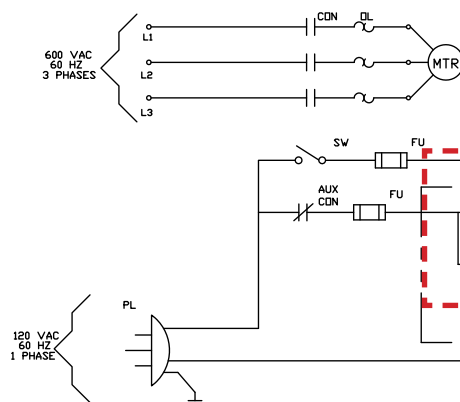
#	STOCK	DESCRIPTION
1	917850	TIMERS
2	324560	1/4" PUSHIN FITTINGS
3	608568	SOLENOID VALVE
4	608284	MUFFLER
5	608405	PNEUMATIC PISTON



OPTIONAL SHAKER

NOTE: ALL 'DCM-xxxx' MODEL

SINGLE SOURCE SCHEMATIC.



DOUBLE SOURCE SCHEMATIC.

NOTE: ALL 'DCM-xxxx' MODEL

1	MA198	FOR CSA APPROVAL	HERGE
NO	DATE	DESCRIPTION	BY/PAR
REVISIONS			
TITLE/TITRE			
SCHEMATIC			
STAND ALONE DUST COLLECTOR			
DESIGNED BY	L. FREDES	TECHNICAL NTS	PROJECT
DRAWN BY	HERGE	REF. NO	DWG/REV. NO
CHECKED BY	L. FREDES		DUST_CSA
ISSUE/REV	1		

DROITS D'AUTEUR
CE DESSIN EST LA PROPRIETE DE CANABLAST INC. LES
INFORMATIONS QU'IL CONTIENT NE PEUVENT ETRE UTILISEES
SANS L'ACCORD PREALABLE DE CANABLAST INC. LA POSSESSION
DE CE DESSIN N'AUTOTISE NI L'UTILISATION NI LA TRANSMISSION A
QUICONQUE DES INFORMATIONS QU'IL CONTIENT.

EXCLUSIVE RIGHTS
THIS DRAWING IS THE EXCLUSIVE PROPERTY OF CANABLAST INC.
INFORMATION CONTAINED HEREIN CAN BE USED ONLY WHEN
SPECIFICALLY AUTHORIZED BY CANABLAST INC. POSSESSION OF THIS
DRAWING DOES NOT AUTHORIZE USE NOR TRANSMISSION TO ANY
OTHER ORGANIZATION.

TOLERANCE DE FABRICATION	
TOLERIE/SOUDURE	MACHINAGE
TOL. FRAC: $\pm 1/16"$	TOL. FRAC: $\pm 1/32"$
TOL. DE PLIAGE: $\pm 2^\circ$	TOL. DEC. XX: $\pm 0.015"$
	TOL. DEC. XXX: $\pm 0.005"$

ISTblast
346 Allée du Golf, St-Eustache (Québec) J7R 0M8 Canada
Tel 1 800 361-1185 • 450 963-4400 Fax 450 963-5122



ISTBLAST LIMITED WARRANTY

ISTblast warrants all equipment led in this manual which is manufactured by **ISTblast** and bearing its name, to be free from defects in material and workmanship on the date of sale by an authorized **ISTblast** distributor to the original purchaser for use. Notwithstanding any special, extended or limited warranty published by **ISTblast** will, for a period of TWELVE (12) months from the date of sale, repair or replace any part of the equipment determined by **ISTblast** to be defective. This warranty applies only when the equipment is installed, operated and maintained in accordance with **ISTblast**'s written recommendations.

This warranty does not cover, and **ISTblast** shall not be liable for general wear and tear, or any malfunction, damage or wear caused by faulty installation, misapplication, abrasion, corrosion, inadequate or improper maintenance, negligence, accident, tampering, or substitution of non- **ISTblast** component parts. Nor shall **ISTblast** be liable for malfunction, damage or wear caused by the incompatibility with **ISTblast** equipment with structures, accessories, equipment or materials not supplied by **ISTblast**, or the improper design, manufacture, installation, operation or maintenance of structures, accessories, equipment or materials not supplied by **ISTblast**.

This warranty is conditioned upon the prepaid return of the equipment claimed to be defective to an authorized **ISTblast** distributor for verification of the claimed defect. If the claimed defect is verified, **ISTblast** will repair or replace free of charge any defective parts. The equipment will be returned to the original purchaser, transportation prepaid. If the inspection of the equipment does not disclose any defect in material or workmanship, repairs will be made at a reasonable charge, which charges may include the costs of parts, labor, and transportation.

THIS WARRANTY IS EXCLUSIVE, AND IS IN LIEU OF ANY OTHER WARRANTIES, EXPRESSED OR IMPLIED, INCLUDING BUT NOT LIMITED TO WARRANTY OF MERCHANTABILITY OR WARRANTY OF FITNESS FOR A PARTICULAR PURPOSE.

ISTblast's sole obligation and the buyer's sole remedy for any breach of warranty shall be as set forth above. The buyer agrees that no other remedy (including, but not limited to, incidental or consequential damages for lost profits, lost sales, injury to person or property, or any other incidental or consequential loss) shall be available. Any action for breach of warranty must be brought forward within one (1) year of the date of sale.

ISTblast MAKES NO WARRANTY, AND DISCLAIMS ALL IMPLIED WARRANTIES OF MERCHANTABILITY AND FITNESS FOR A PARTICULAR PURPOSE, IN CONNECTION WITH ACCESSORIES, EQUIPMENT, MATERIALS OR COMPONENTS SOLD BUT NOT MANUFACTURED BY ISTblast. These items sold, but not manufactured by **ISTblast** (such as electric motors, switches, hose, etc.), are subject to the warranty, if any, of their manufacturer. **ISTblast** will provide the purchaser with reasonable assistance in making any claim for breach of these warranties.

LIMITATION OF LIABILITY

In no event will **ISTblast** be liable for indirect, incidental, special or consequential damages resulting from **ISTblast** supplying equipment hereunder, or the furnishing, performance, or use of any products or other goods sold hereto, whether due to a breach of contract, breach of warranty, the negligence of **ISTblast**, or otherwise.

Report all accidents or "near misses" which involve ISTblast products to:
- Technical Assistance

The following items are not covered under the ISTblast warranty policy:
- Parts or chassis replacement due to normal wears.

Defective material or workmanship is not considered normal wear

