

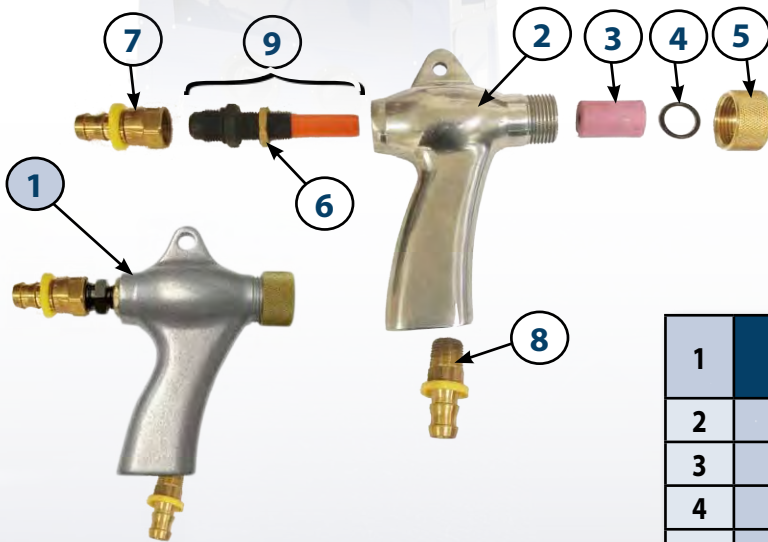
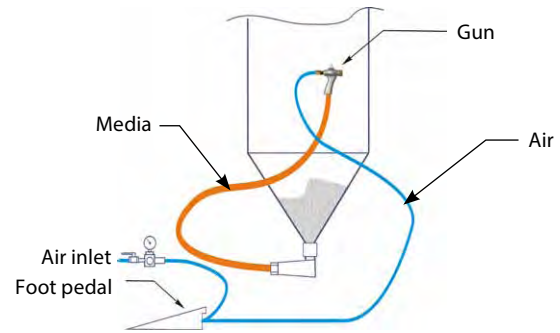


SANDBLAST GUNS FOR CABINETS



SANDBLAST GUN FOR EC0420

HOW IT WORKS

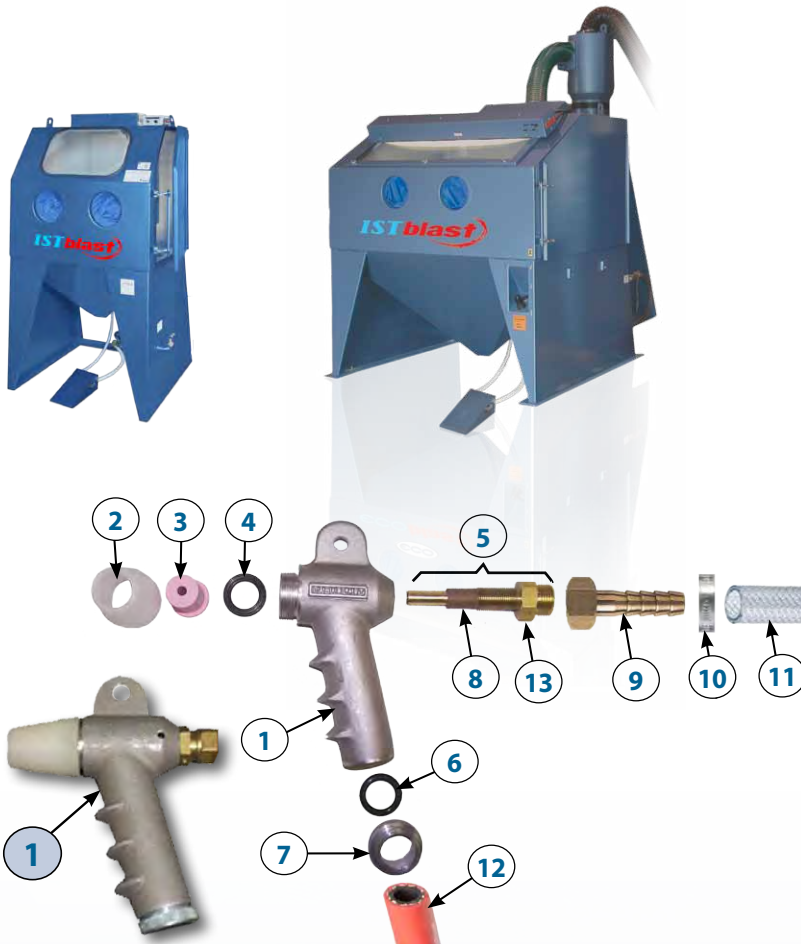


1	420010	SBC420 Complete Gun (include 2 to 8)
2	420004	Body
3	905304	1/4" Ceramic Nozzle
4	420003	Nozzle O-ring #3
5	420001	Nozzle holding nut (metric)
	420001IMP	Nozzle holding nut (imperial)
6	420005	Air jet hex nut
7	420008	Connect F@ 45°, 1/2" ID x 1/2" fl.
8	420009	Media inlet 3/8"
9	420006	Air jet sleeve (incl. 6)

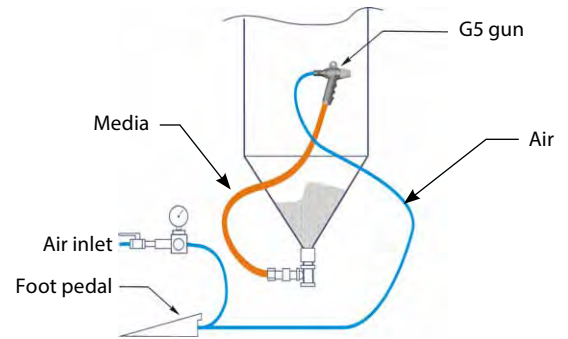


SANDBLAST GUNS FOR SUCTION CABINETS

MODEL G5 FOR ECAB AND INDUSTRIAL SERIE M CABINETS



HOW IT WORKS



1	610119	G-5 blast gun body only
2	607037	NA-G5 / SH5 adaptor
3	605005	CN2-5, standard $5/16'' \pm$ ceramic nozzle for G5-SH5
4	618017	NW-2 rubber washer
5	610117	Complete G5 / SH5 standard $5/32'' \pm$ air jet
6	618110	G5 "O" ring
7	607038	G5 / SH5 hose adaptor
8	618219	Rubber protector
9	632771	$1/2''$ brass female swivel hose barb
10	624015	$3/4''$ "O" clamp
11	606104	$1/2''$ PCV compressed air hose (sold per
12	606148	$1/2''$ multi purpose abrasive conveying

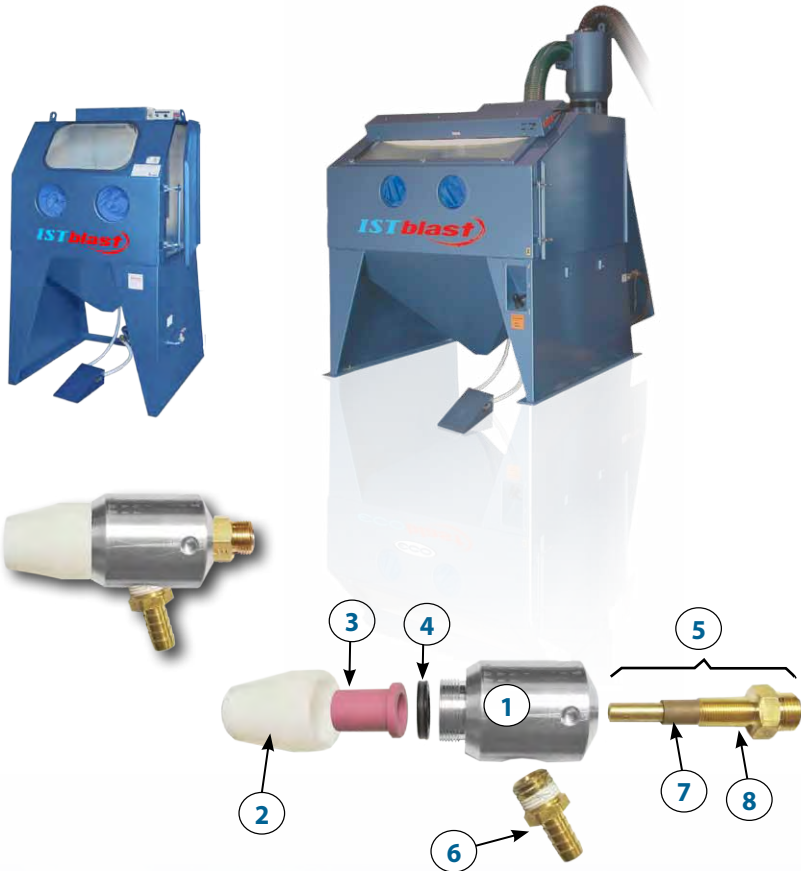
PROPER AIR JET/NOZZLE COMBINATIONS						
Complete blast guns (pre-assembled*)		NOZZLES			Air jet (Complete)	Orifices \pm
G5	Nozzles	Type	Orifice	Code		
610121	Ceramic	CN2-4	1/4"	605004	610116	1/8"
610120	Ceramic (Standard)	CN2-5	5/16"	605005	610117	5/32"
610166	Ceramic	CN2-6	3/8"	605015	610109	3/16"
610122	Ceramic	CN2-7	7/16"	605006	610118	7/32"
610123	Tungsten	TN2-4	1/4"	605007	610116	1/8"
610124	Tungsten	TN2-5	5/16"	605008	610117	5/32"
610167	Tungsten	TN2-6	3/8"	605018	610109	3/16"
610125	Tungsten	TN2-7	7/16"	605009	610118	7/32"
610126	Boron carbide	BN2-4	1/4"	605010	610116	1/8"
610127	Boron carbide	BN2-5	5/16"	605011	610117	5/32"
610168	Boron carbide	BN2-6	3/8"	605021	610109	3/16"
610128	Boron carbide	BN2-7	7/16"	605012	610118	7/32"

* Pre-assembled guns include parts 1 to 8 in the table above

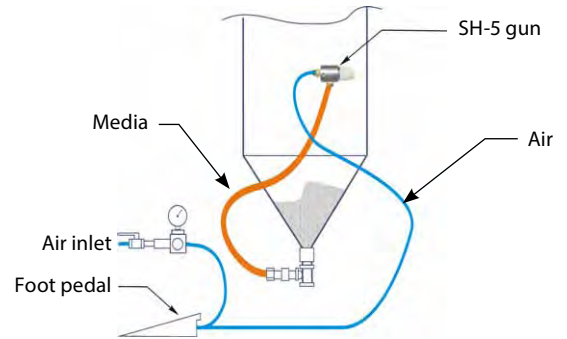


SANDBLAST GUNS FOR SUCTION CABINETS (CONT'D)

MODEL SH-5 FOR ECAB AND INDUSTRIAL SERIE M CABINETS



HOW IT WORKS



1	610134	SH-5 blast gun body only
2	607037	NA-G5 / SH5 adaptor
3	605005	CN2-5, standard 5/16" ± ceramic
4	618017	NW-2 rubber washer
5	610117	Complete G5 / SH5 standard 5/32" ± air jet
6	632760	1/2" stem brass hose barb
7	618219	Rubber protector
8	610109	3/16" air jet

PROPER AIR JET/NOZZLE COMBINATIONS

Complete blast guns (pre-assembled*)		NOZZLES			Air jet (Complete)	Orifices ±
SH-5	Nozzles	Type	Orifice	Code		
610135	Ceramic	CN2-4	1/4"	605004	610116	1/8"
610136	Ceramic (Standard)	CN2-5	5/16"	605005	610117	5/32"
610144	Ceramic	CN2-6	3/8"	605015	610109	3/16"
610137	Ceramic	CN2-7	7/16"	605006	610118	7/32"
610138	Tungsten	TN2-4	1/4"	605007	610116	1/8"
610139	Tungsten	TN2-5	5/16"	605008	610117	5/32"
610145	Tungsten	TN2-6	3/8"	605018	610109	3/16"
610140	Tungsten	TN2-7	7/16"	605009	610118	7/32"
610141	Boron carbide	BN2-4	1/4"	605010	610116	1/8"
610142	Boron carbide	BN2-5	5/16"	605011	610117	5/32"
610146	Boron carbide	BN2-6	3/8"	605021	610109	3/16"
610143	Boron carbide	BN2-7	7/16"	605012	610118	7/32"

* Pre-assembled guns include parts 1 to 8 in the table above

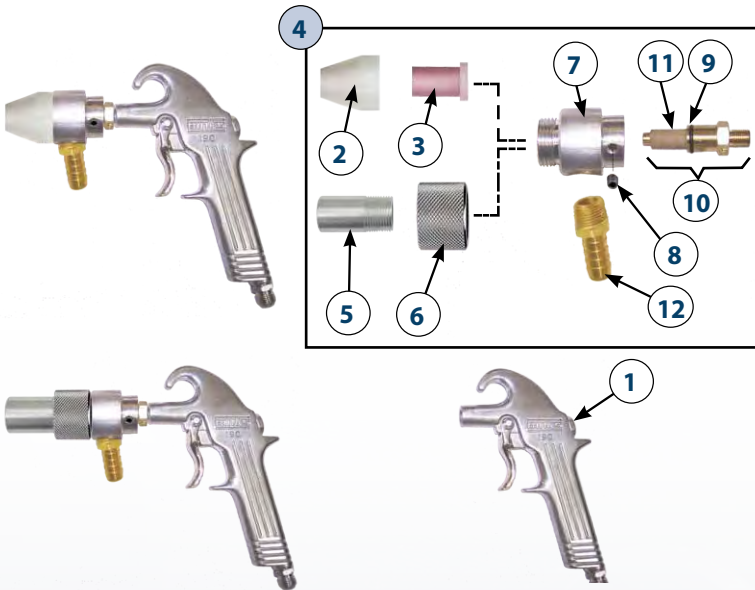
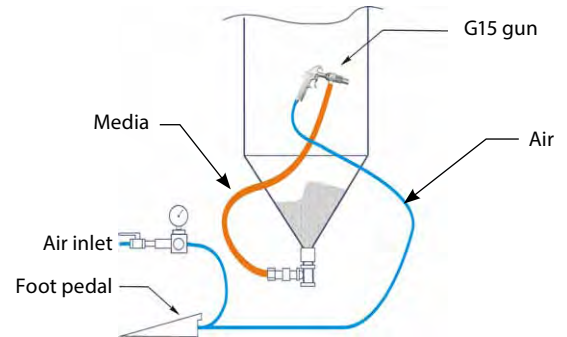


SANDBLAST GUNS FOR SUCTION CABINETS (CONT'D)

G15 MODEL FOR ECONOBLAST CABINETS



HOW IT WORKS



1	610110	G15 Gun body
2	607039	NA-G15 nozzle adaptor
3	605001	Ceramic nozzle CN1-5 5/16" (standard)
4	610148	Suction head ass'y including # 2-3-7-8-10-12 or # 5-6-7-8-10-12
5	605415	BC1-3 3/16" Boron carbide nozzle (standard)
6	607043	3/4" thread, male nozzle adaptor
7	610111	G-15 Suction head
8	NPN	Hexagonal screw 1/4" - 20 x 1/4"
9	618100	G15 "O" ring
10	910104	Repair Kit
11	618218	G15 rubber protector
12	632761	3/8" MPT x 1/2" stem brass hose barb

PROPER AIR JET/NOZZLE COMBINATIONS

Complete blast guns (pre-assembled*)		NOZZLES			Air jet (Complete)	Orifices ±
G15	Nozzles	Type	Orifice	Code		
610100	Ceramic	CN1-4	1/4"	605000	610113	1/8"
610101	Ceramic (Standard)	CN1-5	5/16"	605001	610112	5/32"
610102	Tungsten	TN1-4	1/4"	605002	610113	1/8"
610103	Tungsten	TN1-5	5/16"	605003	610112	5/32"
610105	Tungsten	DC1-3	3/16"	605359	610112	3/32"
610106	Boron carbide	BC1-3	3/16"	605415	610112	3/32"
610107	Boron carbide	BC1-4	1/4"	605416	610113	1/8"
610108	Boron carbide	BC1-5	5/16"	605417	610112	5/32"

* Pre-assembled guns include parts 1 to 8 in the table above