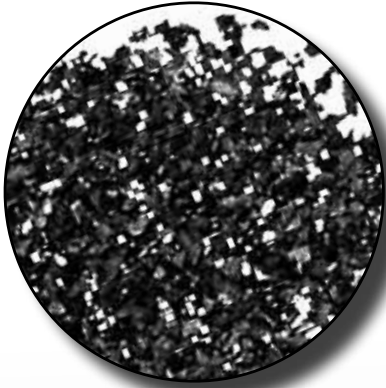




## STEEL GRIT




Steel Grit is one of the most popular abrasive media used in the market today due to its aggressiveness and its high recyclability. Grit is made from chilled iron. It is angular and, like thousands of tiny chisels and cutting tools, does a fast cleaning job. It also produces an ideal surface for adherence of new coatings.

It is widely used in blast rooms and airless wheel blasters for various surface preparation or blast cleaning applications. It is the preferred media for foundries and structural steel manufacturers.

Often the GRIT is mixed with SHOT to achieve specific finishes according to desired applications.

Working speed	MEDIUM-HIGH
Recyclability	VERY HIGH
Probability of metal removal	MEDIUM
Hardness, Mohs scale (Rockwell RC)	8-9 (40-66)

Bulk Density (lb/pi.cu.)	230
Mesh Size	10-325
Typical Blast Pressure (psi)	30-90
Shape	

### ADVANTAGES

- Long lasting media
- Produces low dust
- Can be recycled many times
- Very aggressive media
- Angular and very fast cutting

### APPLICATIONS:

- Blast cleaning
- Paint stripping
- Surface preparation prior to paint job
- Rust / stubborn materials removal and parts restoration
- Descaling of parts from forging, stamping, die forging, drawing and rolling or after heat treatment



## STEEL GRIT (CONT'D)

Steel grit comes in different grades of hardness according to desired application:

Hardness grade	Form	Applications
<b>GH</b>	Angular	Very aggressive, suitable for wheel blasters and pressure blast systems, fast cleaning, surface finishing, stone work, removing epoxies
<b>GL</b>	Edges rounded	High durability, fast cleaning, descaling and surface preparation prior to coating
<b>GP</b>	Spherical	Suitable for descaling work

Grit Size Sieve Opening (mm):

Code	Grade	Sieve Opening (mm)
<b>635233</b>	G-14	1.18
<b>635231</b>	G-16	1.00
<b>635232</b>	G-18	0.71
<b>635224</b>	G-25	0.42
<b>635240</b>	G-40	0.30
<b>635230</b>	G-50	0.18
<b>635244</b>	G-80	0.12

## PACKAGING



Bag = 55 lb



Drum = 1,700 lb



Pallet = 40 bags

