



SANDBLASTING CABINET **M SUCTION SERIES**



- Warranty
- Safety
- Operation

- Service Parts
- Accessory Information
- Registration Form



INSTRUCTION MANUAL

2018-09-14



TABLE OF CONTENTS

Page

IST LIMITED WARRANTY	3
NOTICE TO PURCHASERS AND USERS OF OUR PRODUCTS AND THIS INFORMATIONAL MATERIAL.....	4
SAFETY AND WARNING.....	4
DANGER AND WARNING LABELS	5
GENERAL SAFETY RULES	6
PERSONAL SAFETY	6
UNIT USE AND CARE.....	6
INTRODUCTION.....	7
INSTALLATION	7
ELECTRICAL CONNECTIONS.....	8
VERIFY INSTALLATION	8
ABRASIVE MEDIA LOADING.....	9
ABRASIVES	10
OPERATION	10
RECLAIMER	10
RECLAIMER (CONT'D)	11
MAINTENANCE	11
SHUT DOWN	12
USING YOUR SUCTION CABINET	12
CHANGING THE MEDIA	13
CABINET DIAGRAM & PARTS LIST.....	14
CABINET DIAGRAM & PARTS LIST.....	15
OPTION : TURNTABLE (ON RAILS).....	15
RECYCLER - EXPLODED VIEW	15
RECYCLER - PARTS LIST ASS'Y	16
DUST COLLECTOR - PARTS LIST	18
G5 BLAST GUN	19
ELECTRICAL WIRING	22
NO-CONTACT FOOT PEDAL (OPTIONAL)	23
PEDAL & PARTS	23
NO-CONTACT FOOT PEDAL (OPTIONAL)	24
CONTROL PANEL WITH PARTS & ELECTRICAL DIAGRAM	24
IST WARRANTY REGISTRATION	25
OUR MAP LOCATION.....	27
ABOUT THE COMPANY	28



IST LIMITED WARRANTY

IST warrants all equipment led in this manual which is manufactured by IST and bearing its name, to be free from defects in material and workmanship on the date of sale by an authorized IST distributor to the original purchaser for use. Notwithstanding any special, extended or limited warranty published by IST will, for a period of TWELVE (12) months from the date of sale, repair or replace any part of the equipment determined by IST to be defective. This warranty applies only when the equipment is installed, operated and maintained in accordance with IST's written recommendations.

This warranty does not cover, and IST shall not be liable for general wear and tear, or any malfunction, damage or wear caused by faulty installation, misapplication, abrasion, corrosion, inadequate or improper maintenance, negligence, accident, tampering, or substitution of non-IST component parts. Nor shall IST be liable for malfunction, damage or wear caused by the incompatibility with IST equipment with structures, accessories, equipment or materials not supplied by IST, or the improper design, manufacture, installation, operation or maintenance of structures, accessories, equipment or materials not supplied by IST.

This warranty is conditioned upon the prepaid return of the equipment claimed to be defective to an authorized IST distributor for verification of the claimed defect. If the claimed defect is verified, IST will repair or replace free of charge any defective parts. The equipment will be returned to the original purchaser, transportation prepaid. If the inspection of the equipment does not disclose any defect in material or workmanship, repairs will be made at a reasonable charge, which charges may include the costs of parts, labor, and transportation.

THIS WARRANTY IS EXCLUSIVE, AND IS IN LIEU OF ANY OTHER WARRANTIES, EXPRESSED OR IMPLIED, INCLUDING BUT NOT LIMITED TO WARRANTY OF MERCHANTABILITY OR WARRANTY OF FITNESS FOR A PARTICULAR PURPOSE.

IST's sole obligation and the buyer's sole remedy for any breach of warranty shall be as set forth above. The buyer agrees that no other remedy (including, but not limited to, incidental or consequential damages for lost profits, lost sales, injury to person or property, or any other incidental or consequential loss) shall be available. Any action for breach of warranty must be brought forward within one (1) year of the date of sale.

IST MAKES NO WARRANTY, AND DISCLAIMS ALL IMPLIED WARRANTIES OF MERCHANTABILITY AND FITNESS FOR A PARTICULAR PURPOSE, IN CONNECTION WITH ACCESSORIES, EQUIPMENT, MATERIALS OR COMPONENTS SOLD BUT NOT MANUFACTURED BY IST. These items sold, but not manufactured by IST (such as electric motors, switches, hose, etc.), are subject to the warranty, if any, of their manufacturer. IST will provide the purchaser with reasonable assistance in making any claim for breach of these warranties.

LIMITATION OF LIABILITY

In no event will IST be liable for indirect, incidental, special or consequential damages resulting from IST supplying equipment hereunder, or the furnishing, performance, or use of any products or other goods sold hereto, whether due to a breach of contract, breach of warranty, the negligence of IST, or otherwise.

Report all accidents or "near misses" which involve IST products to:

- Technical Assistance

The following items are not covered under the IST warranty policy:

- Parts or chassis replacement due to normal wears.



NOTICE TO PURCHASERS AND USERS OF OUR PRODUCTS AND THIS INFORMATIONAL MATERIAL

The products described in this material, and the information relating to those products, is intended for knowledgeable, experienced users of abrasive blasting equipment.

No representation is intended or made as to the suitability of the products described herein for any particular purpose of application. No representations are intended or made as to the efficiency, production rate, or the useful life of the products described herein. Any estimate regarding production rates or production finishes are the responsibility of the user and must be derived solely from the user's experience and expertise, and must not be based on information in this material.

The products described in this material may be combined by the user in a variety of ways for purposes determined solely by the user. No representations are intended or made as to the suitability or engineering balance of the combination of products determined by the user in his selection, nor as to the compliance with regulations or standard practice of such combinations of components or products.

It is the responsibility of the knowledgeable, experienced users of the products mentioned in this material to familiarize themselves with the appropriate laws, regulations and safe practices that apply to these products, equipment that is connected to these products and materials that may be used with these products.

It is the responsibility of the user to insure that proper training of operators has been performed and a safe work environment is provided.

Our company is proud to provide a variety of products to the abrasive blasting industry, and we have confidence that the professionals in our industry will utilize their knowledge and expertise in the safe efficient use of these products.

SAFETY AND WARNING

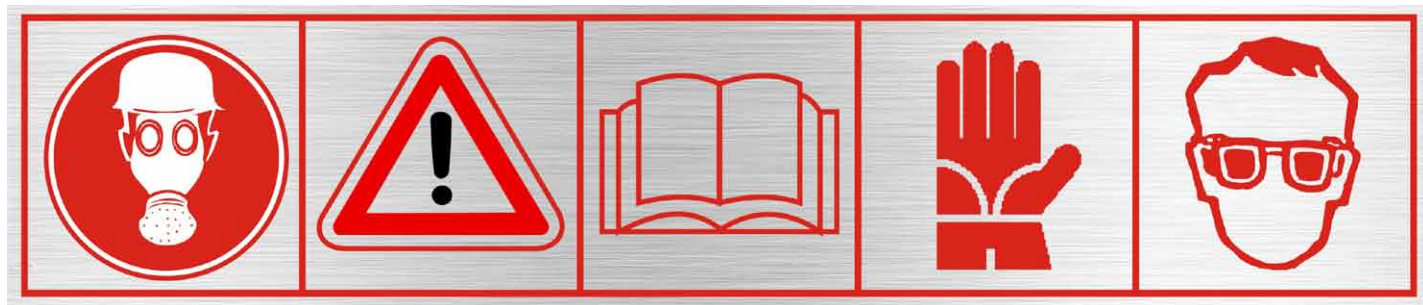
GENERAL SAFETY

1. Carefully inspect the shipping carton for any signs of transport damage. The damage to the carton often indicates possibility of transport damage to the equipment inside.
2. Carefully remove your IST SANDBLASTING CABINET from the shipping carton and skid.
3. Check your equipment immediately to ensure that it is free of transport damage. Report any transport damage to the carrier without delay for possible claim procedures. International Surface Technologies inc. is not responsible for damage to equipment after it leaves our warehouse.
4. Check the equipment and compare it with the parts you have received. If any parts are missing, contact the supplier you purchased the equipment from.

Before operating the IST SANDBLASTING CABINET, read this Instruction Manual completely. All IST products are engineered and manufactured to the highest performance standards and have been subjected to detail testing before shipment from the factory.



DANGER AND WARNING LABELS



1

2

3

4

5

1. Wear breathing mask
2. Observe warnings at all times.
3. Read the Instruction Manual carefully.
4. Wear rubber gloves.
5. Wear protective eyewear before use.

WARNING

« READ ALL INSTRUCTIONS » Failure to follow the SAFETY RULES identified by a BULLET (●) symbol listed BELOW and other safety precautions may result in serious personal injury.

« SAVE THESE INSTRUCTIONS »



GENERAL SAFETY RULES

- **KEEP WORK AREA CLEAN.**
- **KEEP CHILDREN AWAY.** Do not let visitors come in contact with the equipment. All visitors should be kept away from the work area.

PERSONAL SAFETY

- **GUARD AGAINST ELECTRIC SHOCK.** Non-skid footwear is recommended where damp or wet ground may be encountered. A ground fault circuit interrupter protected power line must be used for these conditions.
- **DRESS PROPERLY.** Do not wear loose clothing or jewelry. They can be caught in the moving parts. Wear protective hair covering to contain long hair.
- **USE SAFETY EQUIPMENT. WEAR SAFETY GOGGLES** or glasses with side shields.
- **WEAR A DUST PROOF MASK.**
- **STAY ALERT. USE YOUR COMMON SENSE.** Concentrate on what you are doing. Do not operate the unit when you are tired or under the influence of drugs.
- **DO NOT OVERREACH.** Keep proper footing and balance at all times.
- **BEFORE CONNECTING THE UNIT** be sure the power is the same as that specified on the nameplate of the Sand Blasting Cabinet. With power greater than that specified on the Nameplate can seriously injure the user – as well as damage the Unit.

UNIT USE AND CARE

- **DO NOT FORCE THE UNIT.** It will perform better and safer at the rate for which it was designed.
 - **THE USE OF ANY OTHER ACCESSORIES** not specified in this manual may create a hazard.
 - **CLOSE THE MAIN BREAKER SWITCH BEFORE SERVICING** or when not in use.
 - **DO NOT ALTER OR MISUSE THE UNIT.** These units are precision built. Any alteration or modification not specified is misuse and may result in a dangerous situation.
- Only trained repairmen should attempt (●) **ALL REPAIRS**, electrical or mechanical. Contact the nearest IST a repair service facility. Use only IST replacement parts; any other parts may create a hazard.



INTRODUCTION

Welcome to the IST[®] family of sandblasting products. This booklet contains helpful information and acquaints you with the operation and maintenance of your equipment. Please read carefully and follow our recommendations to assure trouble free operation. If you have any questions, please do not hesitate to contact your distributor or our technical service.

INSTALLATION

1. Make sure the cabinet is leveled and well grounded. Do not place on a wooden floor or a rubber mat, unless a ground wire has been installed. Check with a qualified electrician.
2. Place the system to the installation location
3. Unwrap and remove the cabinet from the pallet
4. Insure there is adequate space on both sides of the cabinet for full opening of part loading/unloading and maintenance access doors.
5. Insure that there is adequate space at both sides of the system for easy access to components such as the reclaimer and dust collector
6. The dust collector should be located on a leveled area near the back of the cabinet, on the right side (while facing cabinet). Attach one end of the corrugated discharge hose to the outlet of the reclaimer and the other end to the inlet located at the bottom of the dust collector. Secure both ends with the supplied clamps. See dust collector section for more details

Connect your shop's air supply line to the air inlet. The hose should have a minimum of 1/2 inch inside diameter. Never use male-female quick couplings. **Choose couplings that offer as little restriction to the airflow as possible.** Compressed air must be clean, dry, and oil free

All IST M[®] series cabinets are equipped with a dust collection model DC-50, DC or DCM 100, 160, 230 or 330 or an optional high-performance dust collector model.



ELECTRICAL CONNECTIONS



Connect cabinet power supply cord to standard 120 Volts, 15 amps outlet.

Note: None-standard voltage is also available.

All electrical connections to the IST cabinet should be made by a qualified electrician and must comply to the codes, standards, and procedures specified by the local authority having jurisdiction.

The customer is responsible for providing appropriate disconnecting means adjacent to the equipment for each incoming power circuit.

Electrical, pneumatic diagrams Refer to pages 25, 26.



It is important to connect the IST system to an Earth Ground to bleed off static electricity, which may be generated while blasting. The Earth Ground may also reduce the discomfort an operator may experience when static electricity is discharged.

VERIFY INSTALLATION

1. Check that all pipe and hose connections are tightly fastened and air tight.
2. Check that all electrical box covers are securely installed.
3. Check that the dust drum under the dust collector is sitting firmly and is center (if equipped).
4. Turn the cabinet snap switch to the "On" position. The cabinet lights will power on and the dust collector fan and the reclaimer will start.
5. Set the blast air pressure regulator to the desired pressure
6. Insert both hands into the cabinet gloves, take the gun and press the foot pedal. Blasting will start, wait a few second and the blast flow will stabilize.
7. Turn the cabinet snap switch to the "Off" position. Light will turn off and the dust collector fan and reclaimer will stop.



CAUTION



Disable and lock out power sources before performing service or maintenance work. Do not look into the fan outlet to determine the correct motor rotation. Check that the fan exhaust is clear of tools and free of debris before checking fan rotation. To avoid personal injury, stay clear of the fan exhaust.

ABRASIVE MEDIA LOADING

Start the electric motor. Open the cabinet door and slowly pour about 25 pounds of abrasive inside the cabinet. Abrasive will be transferred automatically to the reclaimer.

Important note : Your suction cabinet is designed to operate efficiently with most **recyclable abrasive media** on the market. However, certain types such as sand, recycled glass or silica are not recommended and should not be used in our blast cabinet. These abrasives generate very fine dust that may block the bag's pores, obstruct the ventilation system and cause dust accumulation inside the cabinet while in use. Instead, use reclaimable abrasives such as glass beads, aluminum oxide steel grit or plastic media. **For better results** for the reclaiming process, **please call one of your technical representatives** if you have to use a different **type of abrasive** from the one your equipment has been set for at the factory.

Warning : Sudden dumping of media into the cabinet will clog the return hose and stop the reclaiming system.

To properly operate, your IST system use clean, dry air. Moisture or oil from the compressed air supply can contaminate the abrasive, and prevent it from flowing freely and cause inefficient blasting.



ABRASIVES

Manufactured Abrasives

NAME	TYPE	SHAPE	HARDNESS SCALE	DENSITY PDS/CUFT	CONTENT SILICA	DUST FACTOR	MESH SIZE	REUSE FACTOR	AVAILABILITY
Aluminium Oxide	Oxide	Irregular	8 Mohs	120	None	Low	6-600	Good	Good
Silicon Carbide	Carbide	Angular	9 Mohs	100-110	None	Low	6-600	Good	Good
Glass Beads	Silica	Spherical	5-6 Mohs	100	0 free Silica	Low	20-325	Good	Good
Plastic Grit	Polyurethane	Angular	3-4 Mohs	58-60	None	Low	12-80	Good	Good
Chilled Iron & Steel Grit	Metallic	Angular	40-68 Rc Rockwell C	250	None	Very Low	18-200	High	Good
Chilled Iron & Steel Shot	Metallic	Spherical	40-68 Rc Rockwell C	250	None	Very Low	7-200	High	Good

OPERATION

Turn on compressed air and turn on lightning and motor with the power switch. Compressed air must be clean, dry, and oil free.

1. When using the unit, air pressure **should not exceed 110 psi**) Place the part to be treated inside the cabinet. The parts must be free of oil, grease, and moisture. Close and latch the cabinet load doors.
2. After closing the door, insert your hands into the two front glove openings. The blasting gun should be held firmly in one hand and the part to be treated in the other hand. The stream of abrasive should be oriented to the bottom of the working chamber.
3. Depressing blast control pedal will release compressed air flow to the blast gun. As the compressed air passes through the air jet, it creates a vacuum inside the gun and sucks up the media from the reclaimer and discharges it out through the nozzle. Hold the gun or nozzle at a 90-degree angle to the part at a distance that produces the fastest results. The reclaimer screen will require periodic cleaning. The frequency of cleaning will depend on the volume of debris produced.
4. After the media has blasted the part, the reclaiming system vacuums up the abrasive, dust and foreign material through the conduit at the bottom of the cabinet to the reclaimer. The reusable abrasive is separated from the dust and foreign material and is returned to the storage hopper for reuse. The dust bag or the cartridges of the dust collector, filters the dust and fine particles. Larger pieces of contaminants are trapped in the hopper's screen drawer.

RECLAIMER

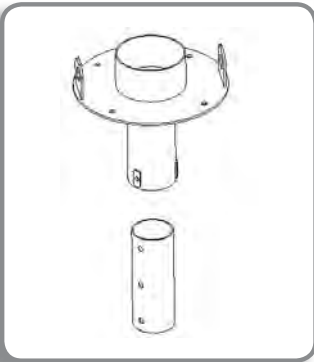
Although the reclaimer is factory set, it is possible to increase the amount of fine dust to be sucked up by the dust bag or dust collector. Just move the rubber band to adjust the obstruction of the holes located behind it. There are **two methods to change those settings**

1. Adjustment of the SBR 1/8 « X 2 » rubber band

This adjustment will influence the quantity of dust that will be evacuated to the dust collector. Proceed step by step, moving the rubber band 1/4" at the time, covering or uncovering the slots behind it. **A wider opening will draw up more dust to the dust collector; a smaller opening will reduce that quantity. The equipment has to run for approx. two (2) hours before any changes can be noticed. Repeat as needed.**



RECLAIMER (CONT'D)



2. Adjustment of the telescopic tube, inside of reclaimer

If, after a few tests, the rubber band adjustments should prove to be insufficient, you will have to proceed to the telescopic tube adjustment. This will be necessary if you have to change the abrasive type or granulometry. Proceed step by step, moving the tube up or down, 1 inch at the time. The equipment has to run for approx. two (2) hours before any changes can be noticed. Repeat as needed. Moving the tube downward will increase the quantity of dust drawn up by the dust collector, moving it up will decrease that quantity.

AR 3/4 abrasive regulator :



Located at the bottom of the reclaimer, the AR 3/4 abrasive regulator meters the amount of media discharged from the nozzle. Be sure that nothing seals off the hole completely. You can adjust the opening using the adjustable clamp that must be located over it, covering about 2/3 of the hole. A smaller opening will bring more abrasive to the nozzle; a wider opening will bring less abrasive. A complete opening or a complete covering will interrupt the abrasive flow. To insure the performances of your equipment, the compressed air supply must be clean and dry. Oil or humidity in the compressed air will cause an abrasive jam at the abrasive regulator level, reducing and even stopping the abrasive flow.

MAINTENANCE

To avoid blockage, it is highly recommended to empty and clean the reclaimer's screen drawer every day.

Check for wear on all parts in direct contact with the blasting action: air jet, nozzle, window, window's acetate protector, gloves, hoses, door's rubber seals.

Nozzle : Check nozzle wear on a regular basis. The orifice diameter should never be more than 1/8" wider than the original diameter. A worn nozzle will cause a drop of abrasive pull and velocity.

Abrasive hose : Check abrasive hose for wear. It has to be changed before it gets any perforation. Give a special attention to parts of the hose that are curved.

Couplings and gaskets: Check on a regular basis the hose couplings and gaskets for wear.



SHUT DOWN

1. Release the foot treadle. The blast will stop.
2. Once cleaning is finished, await 10 to 15 seconds before turning off the power switch and opening the door of the cabinet in order to allow the evacuation of dust in suspension.
3. Open the door and remove the blast treated parts from the blast cabinet
4. Close air supply
5. Turn power switch to the off position.
6. Empty the dust collector waste drum. (Optional part) Replace the drum squarely on the dust drum platform and centered under the cover. The dust drum and cover must create an airtight seal.

USING YOUR SUCTION CABINET

1. Check both the quantity and quality of abrasive frequently. If required, clean out the system and reload with new media. Make sure to use dry, clean abrasive. During normal blasting operation, the media should be replaced completely after 8 hours.
2. Empty dust pail or dust collector's bottom hopper regularly.
3. Check for wear on all parts in direct contact with the blasting action: nozzle, gloves, window, plastic shield, air-jet, gun etc. Special attention must be given to nozzle, nozzle ring and rubber protector to avoid premature wear of gun. Make sure ventilation inlet is always free of obstruction.

WARNING : Never shake bags while cabinet reclaiming is running. Never wash dust bags instead use compressed air, **blowing from the outside to the inside of the bag**, (the opposite would clog the bag's pores and make it unusable).

4. Make sure you have a proper air jet/nozzle combination. Standard IST suction cabinets are equipped with 5/32" air jets and 5/16" nozzles. A simple way to determine if you have an incorrect combination is to check the abrasive regulator at the bottom of the reclaimer when the operator's pedal is depressed. If media is being discharged out of the regulator, there is an incorrect jet/nozzle combination or an obstruction inside the gun.

Proper Jet/nozzle combinations

JET	NOZZLE	AIR CONSUMPTION
1/8"	1/4"	21 CFM * @ 80 PSI *
5/32"	5/16" standard	34 CFM * @ 80 PSI *
3/16"	3/8"	48 CFM * @ 80 PSI *
7/32"	7/16"	65 CFM * @ 80 PSI *

- CFM: Cubic Feet / Minute * PSI : Pounds / Square Inch



CHANGING THE MEDIA

When changing from one type or size of media to another, it can be extremely important to clean out the blast and recovery hoses, storage hopper, and the cabinet interior thoroughly to avoid contamination of the new media.

CLEANING THE SYSTEM

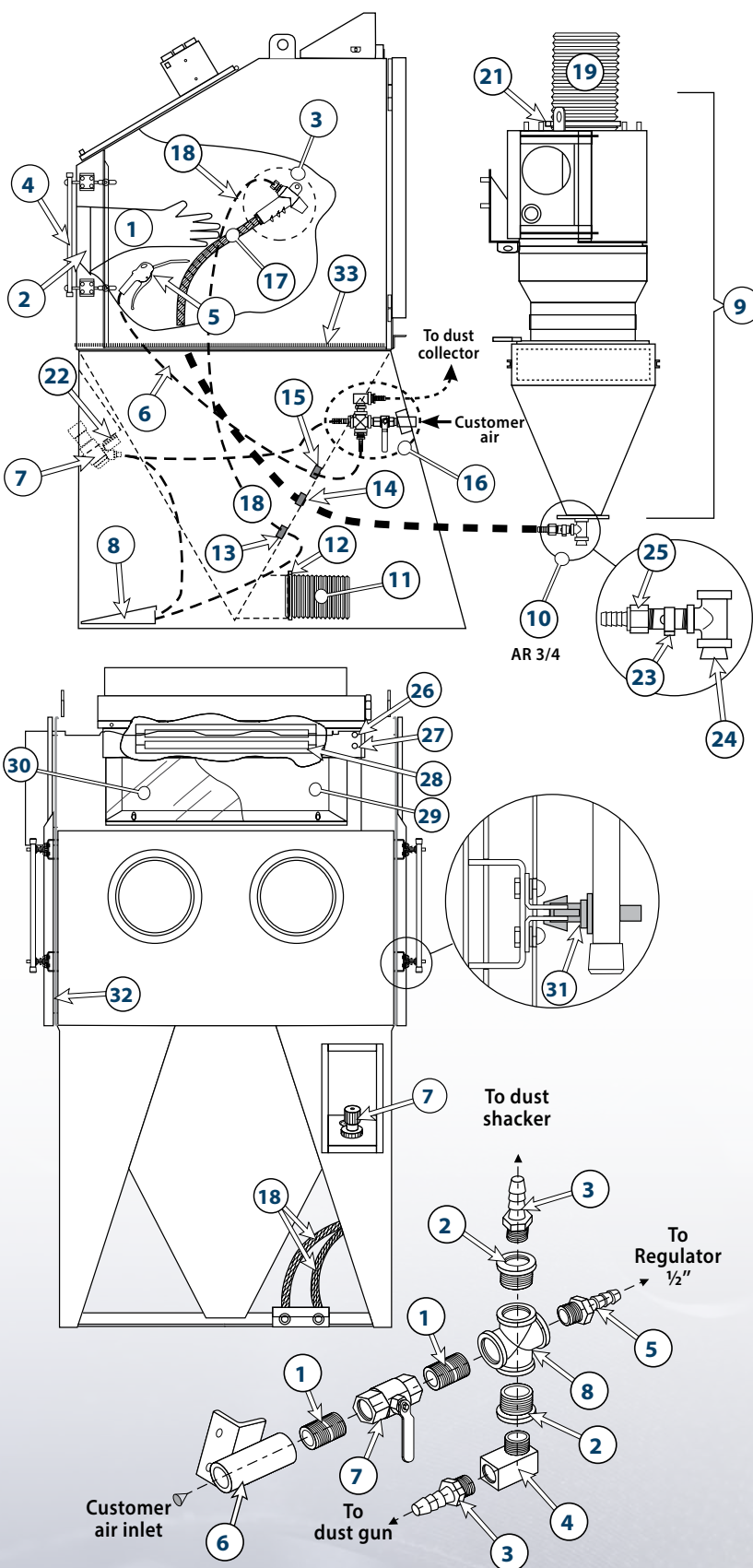
1. Turn the system off.
2. You need a container large enough to collect used media. Place the container under the AR $\frac{3}{4}$ valve (part 3, page 18).
3. Remove AR $\frac{3}{4}$ rubber plug , media will fall in your container.(part 12, page 18)
4. Turn on system and press foot pedal, to make sure all media as been removed.
5. All media will be expelled from the system trough sandblast hose
6. Turn off system and put back AR $\frac{3}{4}$ rubber plug. (part 12, page 18)
7. When cleaning is done put back everything in place.

RELOADING WITH NEW ABRASIVE

1. Turn system power switch on.
2. Slowly pour new media in cabinet (25 pounds).
3. Adjust pressure at desired position.
4. You are now ready to operate.



CABINET DIAGRAM & PARTS LIST



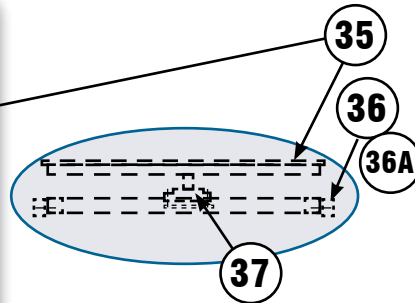
1	603212	GLOVES WITH NYLON SLEEVES, 8" ID Ø X 30" LONG
	603205	GLOVES WITH LEATHER SLEEVES
2	624128	8" Ø GLOVE CLAMP
3	610120	G5 CN2-5 COMPLETE SAND BLAST GUN
4	610288	STANDARD DOOR HANDLE
5	610275	DUST BLOW-OFF GUN
6	606147	M.P. 1/4" DUST GUN HOSE (SOLD PER FOOT)
7	608022	1/2" PRESSURE REGULATOR
8	610270	SUCTION FOOT PEDAL
	608604	SUCTION FOOT PEDAL VALVE
9		COMPLETE RECYCLER (SEE TABLE)
10	608010	AR 3/4 ABRASIVE REGULATOR
	606120	RECLAIMER HOSE 5" - 600 CFM
		RECLAIMER HOSE 5" - 900 CFM
11	606123	RECLAIMER HOSE 6" - 1200 CFM
		RECLAIMER HOSE 6" - 1800 CFM
12	624121	5" CLAMP
	624124	6" CLAMP
13	618126	GROMMET FOR AIR HOSE 1/2"
14	618127	GROMMET FOR ABRASIVE HOSE 1/2"
15	618133	GROMMET FOR DUST GUN HOSE 1/4"
16	666211	PNEUMATIC SUCTION MANIFOLD
17	606148	MULTI PURPOSE 1/2" ABRASIVE HOSE
18	606104	AIR HOSE 1/2"
	606169	6" - 600 CFM SUCTION HOSE
19	606171	7" - 900 CFM SUCTION HOSE
	606173	8" - 1200 CFM - 1800 CFM SUCTION HOSE
20	618305	1/2" X 1" DRAWER SEAL (SOLD PER FOOT)
	624124	6" CLAMP
21	624127	7" CLAMP
	624128	8" CLAMP
22	611022	1/4" PRESSURE GAUGE
23	608011	AR 3/4" CLIP
24	618226	DRAIN PLUG
25	632960	PL ADAPTOR 3/4" FPT X 1/2"
26	616933	AGC FUSE 1A-250V
	616907	FUSE HOLDER
27	617014	ON/OFF SWITCH
28	617150	24" FIXTURE C/W LED LIGHT (CABINET LESS THAN 48")
	617151	48" FIXTURE C/W LED LIGHT (CABINET MORE THAN 48")
29	610212	23 3/4" X 18 3/4" LAMINATED SAFETY GLASS (CABINET LESS THAN 48")
	610211	17" X 48" LAMINATED SAFETY GLASS (CABINET MORE THAN 48")
	618318	WINDOW SEAL 1/2" X 1/4" (SOLD PER FOOT)
30	613038	RPW 50 - 23 3/4" X 18 3/4" ACETATE GLASS PROTECTOR
	613035	RPW 1748 ACETATE GLASS PROTECTOR (CABINET MORE THAN 48")
31	910223	TOGGLE STEM
32	618321	DOOR RUBBER GASKET TYPE "P"
	610453	28" X 44" EXPANDED STEEL FLOOR
	610458	36" X 36" EXPANDED STEEL FLOOR
	610459	36" X 48" EXPANDED STEEL FLOOR
33	610462	42" X 48" EXPANDED STEEL FLOOR
	610463	48" X 48" EXPANDED STEEL FLOOR
	610469	48" X 60" EXPANDED STEEL FLOOR
	610465	60" X 60" EXPANDED STEEL FLOOR
34	600116	SECURITY SWITCH (OPTIONAL)

SUCTION MANIFOLD

1	630301	1/2" NPT NIPPLE
2	632745	1/2" NPTX 1/4" NPT REDUCTOR
3	632270	1/4" NPT ELBOW
4	630328	M-F 1/4" NPT ELBOW
5	632760	1/2" NPT ADAPTOR
6	630390	1/2" NPT INLET RING
7	630341	1/2" NPT BALL VALVE
8	630327	1/2" CROSS

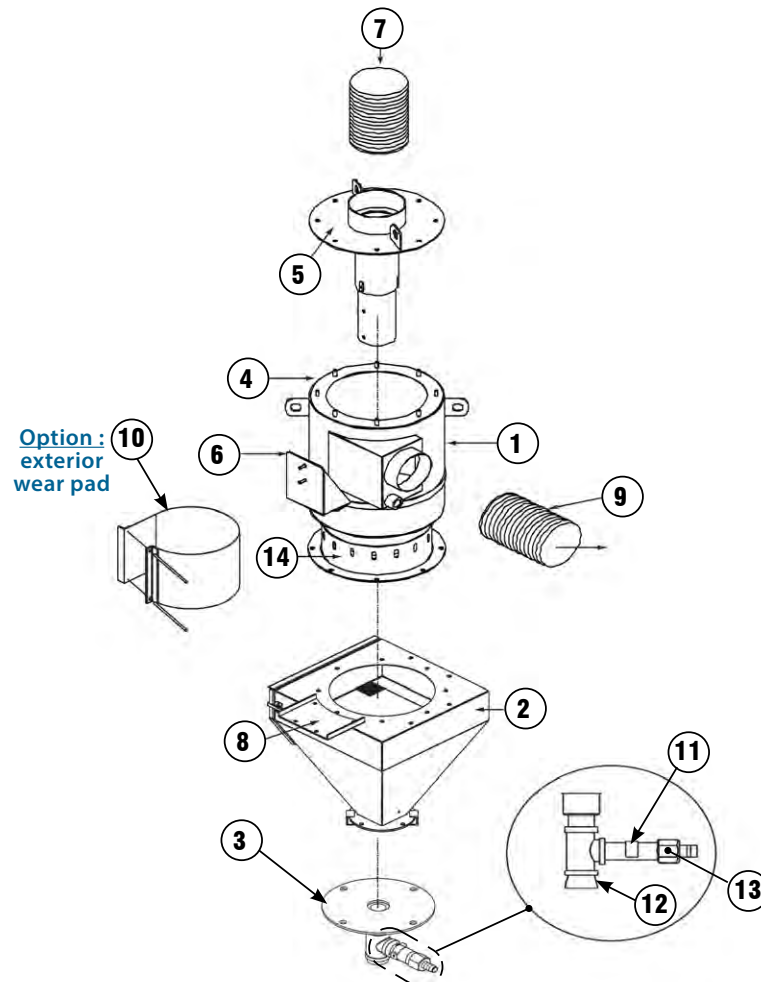


CABINET DIAGRAM & PARTS LIST **OPTION : TURNTABLE (ON RAILS)**



#	STOCK	DESCRIPTION
35	619121	18" TURNTABLE TOP ONLY
	619122	21" TURNTABLE TOP ONLY
	619123	28" TURNTABLE TOP ONLY
	619124	32" TURNTABLE TOP ONLY
	619125	36" TURNTABLE TOP ONLY
	619126	40" TURNTABLE TOP ONLY
	619128	48" TURNTABLE TOP ONLY
36	619022	4" «V» GROOVE WHEEL C/W BUSHING
36A	619025	BUSHING ONLY (FOR WHEEL)
37	619211	1" SHAFT BEARING

RECYCLER - EXPLODED VIEW





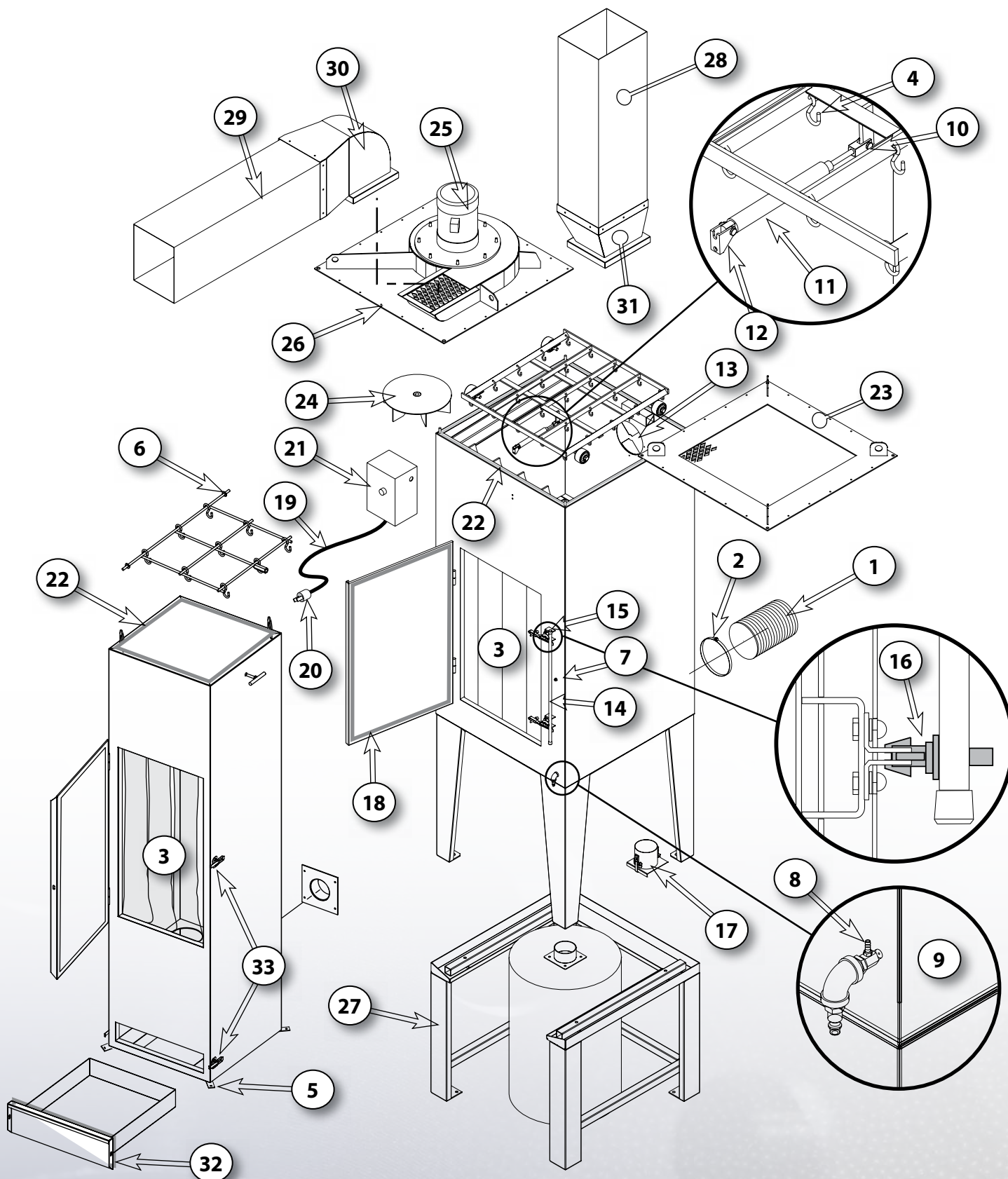
RECYCLER - PARTS LIST ASS'Y

	1	2	3	4	5	6	7
COM- PLETE RECY- CLER	Casing	Hopper	Suction Hopper Adaptor	Auto- adhesive Rubber (sold per foot)	Outlet Case	Casing Support	Suction Hose (sold per foot)
609188 RVM 13"	609230	609286	609287	618318	-	609180	606169
609242 RVB 13"	609230	609286	609287	618318	609212	609180	606169
609190 RVM 16"	609231	609286	609287	618318	-	609180	606171
609244 RVB 16"	609231	609286	609287	618318	609213	609181	606171
609192 RVM 24"	609232	609286	609287	618318	-	609181	606173
609246 RVB 24"	609232	609286	609287	618318	609214	609182	606173

	8	9	10	11	12	13	14
COM- PLETE RECY- CLER	Suction Hopper Support	Abrasive Carry Hose (sold per foot)	Exterior Wear Pad	AR 3/4" CLIP	Rubber plug	PL adaptor 3/4" FPT x 1/2" B	Rubber band
609188 RVM 13"	609178	606120	609283	608011	618226	632960	618334
609242 RVB 13"	609178	606120	609283	608011	618226	632960	618334
609190 RVM 16"	609178	606123	609284	608011	618226	632960	618334
609244 RVB 16"	609178	606123	609284	608011	618226	632960	618334
609192 RVM 24"	609174	606124	609285	608011	618226	632960	618334
609246 RVB 24"	609174	606124	609285	608011	618226	632960	618334



DUST COLLECTOR - EXPLODED VIEW



For DC50 only

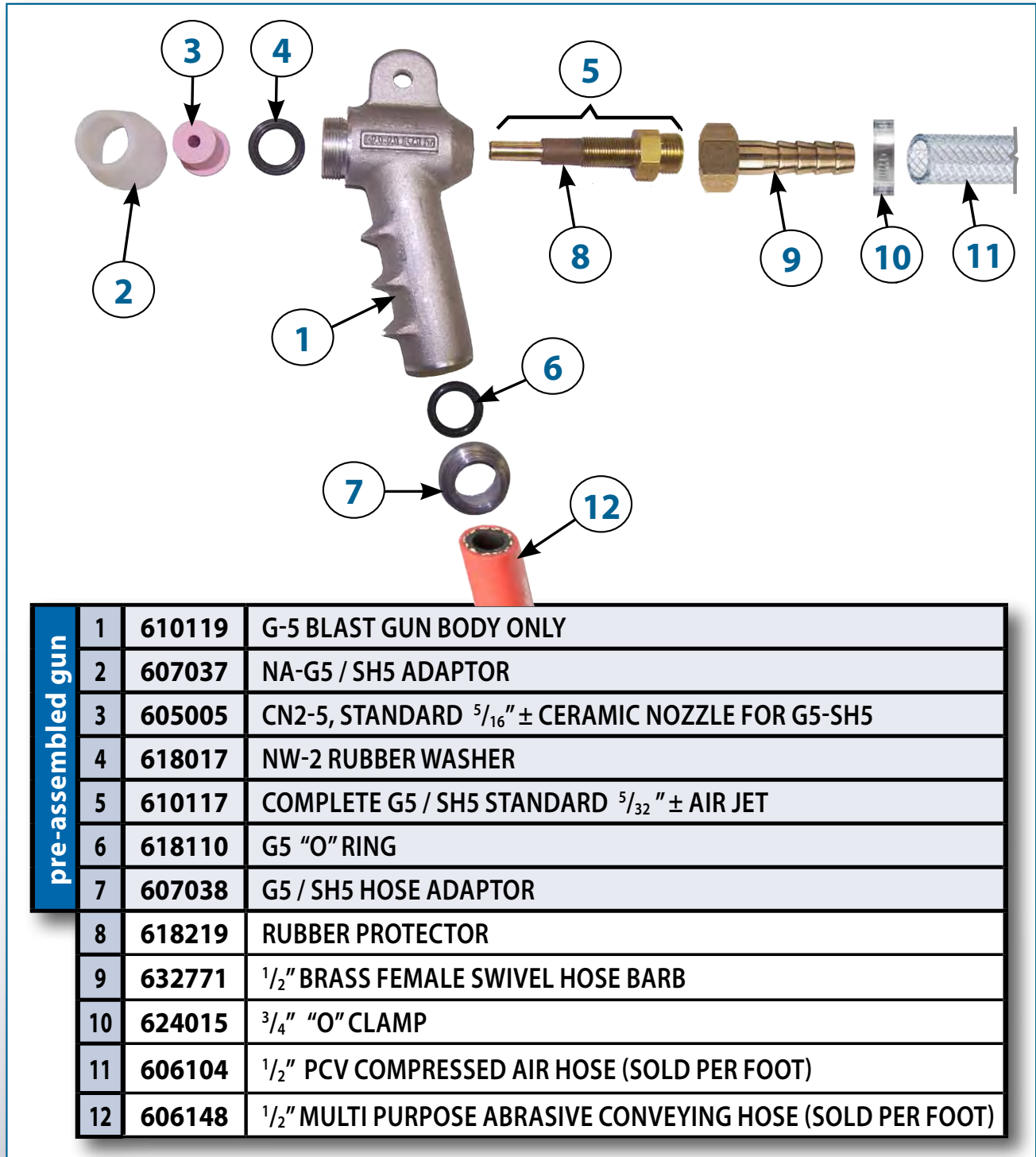


DUST COLLECTOR - PARTS LIST

		MODELS	DC50	DC100	DCM100	DC160	DCM160	DC200	DC230	DCM230	DC330	DCM330
#	Part Nb	DESCRIPTION	APPLICATION									
1	606167	Suction hose 4" (sold per foot)	X									
	606168	Suction hose 5" (sold per foot)		X	X							
	606169	Suction hose 6" (sold per foot)		X	X							
	606171	Suction hose 7" (sold per foot)				X	X					
	606173	Suction hose 8" (sold per foot)						X	X			
	606177	Suction hose 10" (sold per foot)								X	X	
2	624117	4" clamp	X									
	624121	5" clamp										
	624124	6" clamp		X	X							
	624127	7" clamp				X	X					
	624128	8" clamp						X	X			
	624137	10" clamp								X	X	
3	601316	Dust bag DB-6	9	16	16	25	25	30	36	36		
	601308	Dust bag DB-9								36	36	
4	601309	"S" hook	X	X	X	X	X	X	X	X	X	X
5	612427	Level leg	X									
6	619006	DC50 wheel	X									
7	608508	Shaking button		X	X	X	X	X	X	X	X	X
8	608408	Flow regulator		X	X	X	X	X	X	X	X	X
9	608409	Adaptor		X	X	X	X	X	X	X	X	X
10	608406	Hinge Axle		X	X	X	X	X	X	X	X	X
11	608405	Actuation cylinder		X	X	X	X	X	X	X	X	X
12	608407	Hinge plate		X	X	X	X	X	X	X	X	X
13	610280	Adjustable air trap	X	X	X	X	X	X	X	X	X	X
14	610287	Door handle		X	X	X	X	X	X	X	X	X
15	610223	Toggle lock		X	X	X	X	X	X	X	X	X
16	910223	Toggle stem		X	X	X	X	X	X	X	X	X
17	601378	"Z" Cleaning Trap		X	X	X	X	X	X	X	X	X
18	618306	Auto-adhesive foam (sold per foot)	X	X	X	X	X	X	X	X	X	X
19	616575	Electric cable (sold per foot)			X		X			X		X
20	616406	Electrical plug			X		X			X		X
21	617063	Electrical box					X			X		X
	617066	2 hp overload protector					X					
	617068	3 hp overload protector								X		
	617067	5 hp overload protector									X	
22	618318	Auto-adhesive rubber (sold per foot)	X	X	X	X	X	X	X	X	X	X
23	601340	Plate		X								
	601341	Plate				X						
		MODELS	DC50	DC100	DCM100	DC160	DCM160	DC200	DC230	DCM230	DC330	DCM330
#	Part Nb	DESCRIPTION	APPLICATION									
24	601480	Plate								X		X
	610526	Impeller 1 hp			X							
	610527	Impeller 2 hp				X						
	610528	Impeller 3 hp								X		
	610529	Impeller 5 hp										X
	616313	Motor 1 hp 120V STD - 600 CFM			X							
25	616324	Motor 2 hp 575V STD - 900 CFM										
	616332	Motor 3 hp 575V STD - 1200 CFM								X		
	616340	Motor 5 hp 575V STD - 1800 CFM										X
	601342	Motor plate (1 hp)			X							
26	601343	Motor plate (2 hp)				X						
	601482	Motor plate (3 hp)								X		
	601483	Motor plate (5 hp)										X
	601486	Barrel option DC/DCM 100 - 15 gals		X	X							
27	601487	Barrel option DC/DCM 160 - 30 gals				X	X					
	601488	Barrel option DC/DCM 160 - 15 gals				X	X					
	601489	Barrel option DC/230 330 - 15 gals							X	X	X	X
	601490	Barrel option DC/230 330 - 30 gals							X	X	X	X
	601492	Barrel option DC/DCM 160 - 45 gals				X	X					
	901449	Barrel option DC200 - 30 gals						X				
	601423	Vertical muffler 600 CFM			X							
	601424	Vertical muffler 900 CFM				X						
28	601425	Vertical muffler 1200 CFM								X		
	601426	Vertical muffler 1800 CFM										X
	601434	Horizontal muffler 6000 CFM			X							
	601435	Horizontal muffler 900 CFM				X						
29	601436	Horizontal muffler 1200 CFM								X		
	601437	Horizontal muffler . 1800 CFM										X
	601402	Horizontal muffler adaptor 600 CFM			X							
	601403	Horizontal muffler adaptor 900 CFM				X						
30	601404	Horizontal muffler adaptor 1200 CFM								X		
	601405	Horizontal muffler adaptor 1800 CFM										X
	601416	Vertical muffler adaptor 600 CFM			X							
	601417	Vertical muffler adaptor 900 CFM				X						
31	601418	Vertical muffler adaptor 1200 CFM								X		
	601419	Vertical muffler adaptor 1800 CFM										X
	618305	Rubber foam 1/2" x 1"	X									
	610269	Toggle stem	X									



G5 BLAST GUN



pre-assembled gun	1	610119	G-5 BLAST GUN BODY ONLY
	2	607037	NA-G5 / SH5 ADAPTOR
	3	605005	CN2-5, STANDARD $\frac{5}{16}$ " \pm CERAMIC NOZZLE FOR G5-SH5
	4	618017	NW-2 RUBBER WASHER
	5	610117	COMPLETE G5 / SH5 STANDARD $\frac{5}{32}$ " \pm AIR JET
	6	618110	G5 "O" RING
	7	607038	G5 / SH5 HOSE ADAPTOR
	8	618219	RUBBER PROTECTOR
	9	632771	$\frac{1}{2}$ " BRASS FEMALE SWIVEL HOSE BARB
	10	624015	$\frac{3}{4}$ " "O" CLAMP
	11	606104	$\frac{1}{2}$ " PCV COMPRESSED AIR HOSE (SOLD PER FOOT)
	12	606148	$\frac{1}{2}$ " MULTI PURPOSE ABRASIVE CONVEYING HOSE (SOLD PER FOOT)

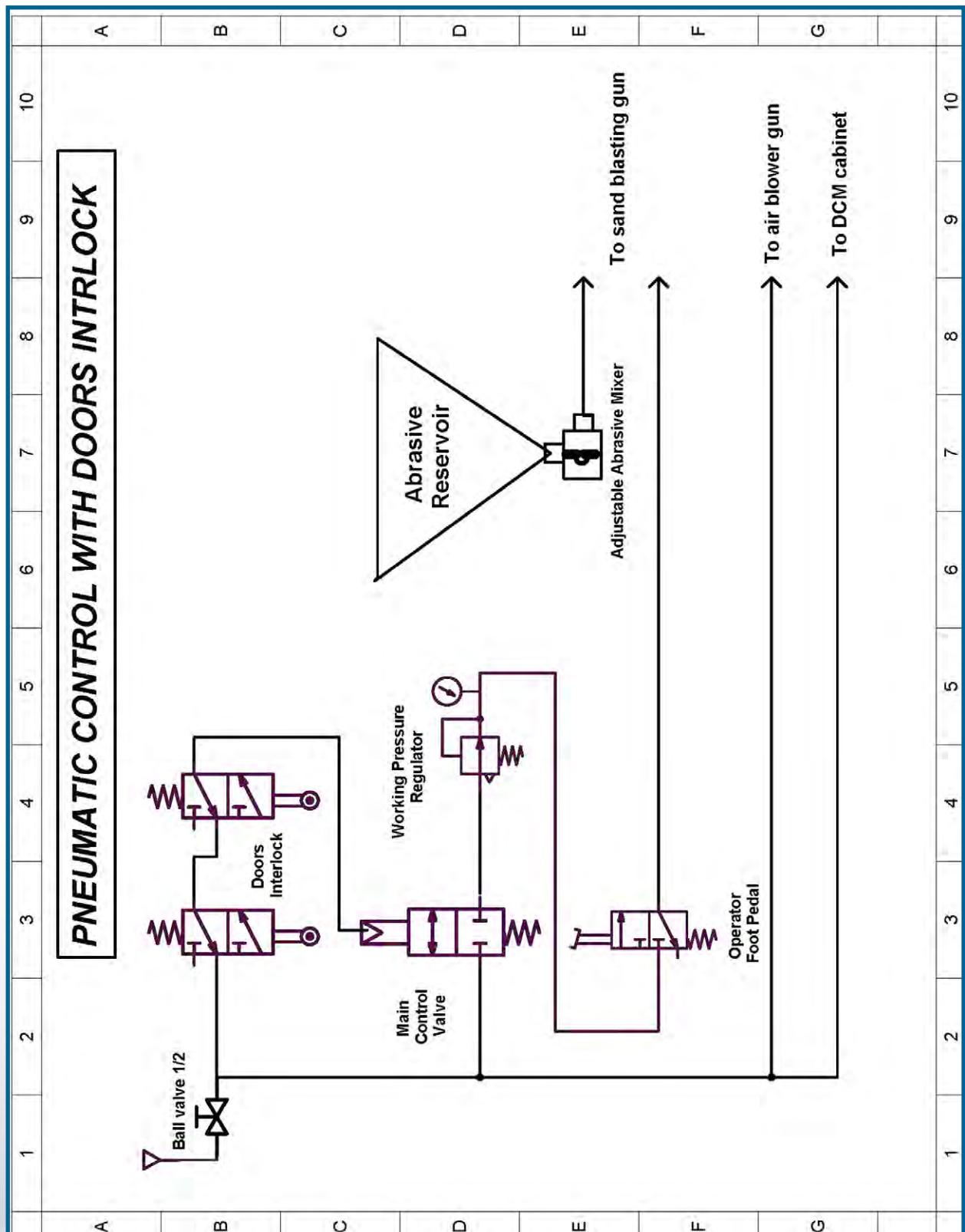


PROPER AIR JET/NOZZLE COMBINATIONS

G5 COMPLETE BLAST GUN (PRE-ASSEMBLED*)		NOZZLES			AIR JET (COMPLETE)	ORIFICES ±
G5	NOZZLES	TYPE	ORIFICE	CODE		
610121	CERAMIC	CN2-4	1/4"	605004	610116	1/8"
610120	CERAMIC (STANDARD)	CN2-5	5/16"	605005	610117	5/32"
610166	CERAMIC	CN2-6	3/8"	605015	610109	3/16"
610122	CERAMIC	CN2-7	7/16"	605006	610118	7/32"
610123	TUNGSTEN	TN2-4	1/4"	605007	610116	1/8"
610124	TUNGSTEN	TN2-5	5/16"	605008	610117	5/32"
610167	TUNGSTEN	TN2-6	3/8"	605018	610109	3/16"
610125	TUNGSTEN	TN2-7	7/16"	605009	610118	7/32"
610126	BORON CARBIDE	BN2-4	1/4"	605010	610116	1/8"
610127	BORON CARBIDE	BN2-5	5/16"	605011	610117	5/32"
610168	BORON CARBIDE	BN2-6	3/8"	605021	610109	3/16"
610128	BORON CARBIDE	BN2-7	7/16"	605012	610118	7/32"

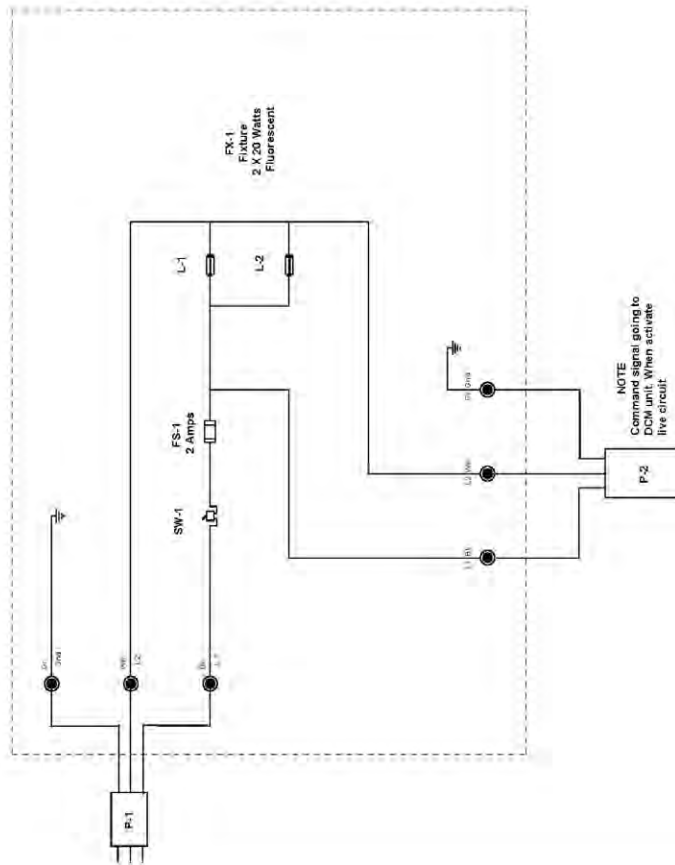


PNEUMATIC DIAGRAM





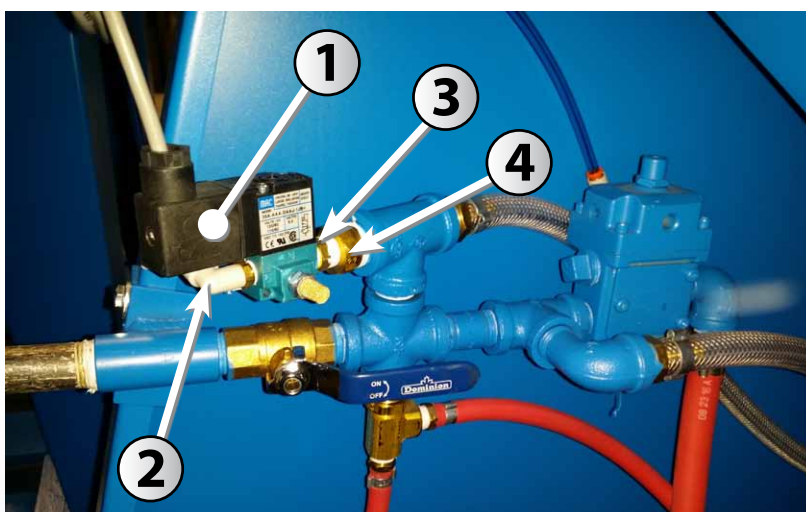
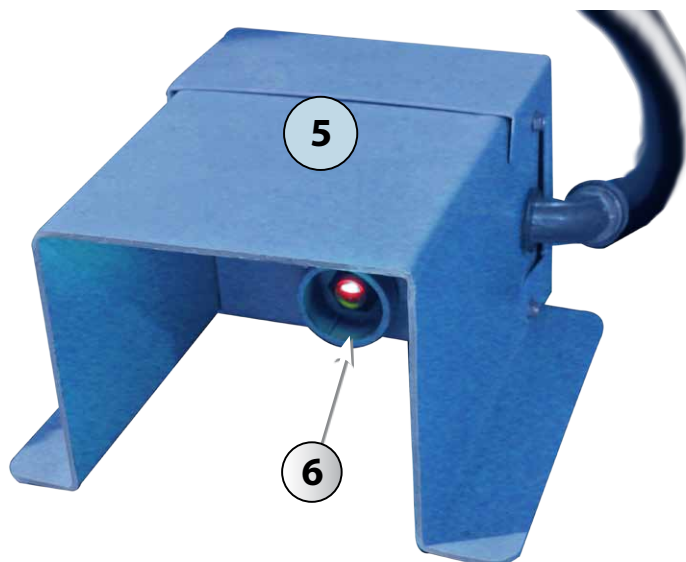
SYMBOL	PIN	DESCRIPTION
P-1	616462	Plug male 15 Amps 125 V AC
P-2	616406	Plug female 15 Amps 125 V AC
SW-1	617014	Switch toggle 15 Amps 250 VAC
SW-1	617019	Boot rubber protective
FS-1	616907	Fuse holder AGC type fuse
FS-1	616934	Fuse AGC 2 Amps 250 VAC
L-1	617150	Lamp neon 24 inches
L-1	617150	Lamp neon 24 inches
FX-1	617141	Fixture 2 lamps 125 VAC



Name:	M3648/DCM	Date :	Sep 2010
	115 VAC	Revision:	Sep 17 2010
Drawn By:	M. T.	Drawing Number:	M3648/DCM 115VAC Page 1 of 1



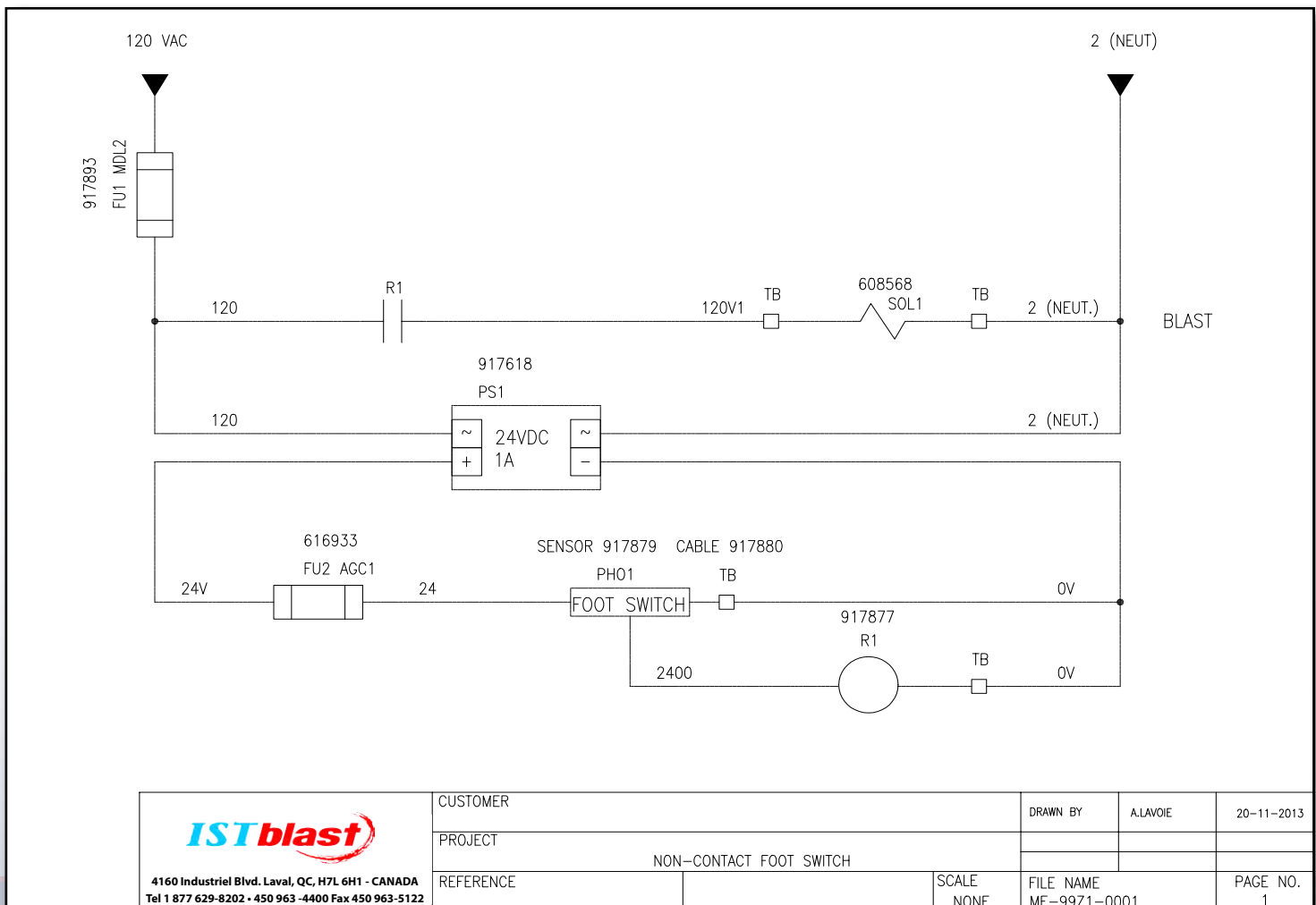
NO-CONTACT FOOT PEDAL (OPTIONAL) PEDAL & PARTS



#	STOCK	DESCRIPTION
1	608568	SOLENOID VALVE
2	324561	1/8" PUSH-IN FITTING
3	632214	ADAPTER 1/8" TO 1/4"
4	632745	ADAPTER 1/2" TO 1/4"
5	910525	COMPLETE NO-CONTACT FOOT PEDAL (FRAME + CELL)
6	917879	INFRARED SENSOR CELL



#	STOCK	DESCRIPTION
1	917618	24V DC - POWER SUPPLY
2	917877	24V DC RELAY
3A	917893	MDL.2A FUSE
3B	616933	AGC-1A FUSE
4	-/-	TERMINAL BLOCKS
5	616865	GROUND BLOCKS
6	917880	SENSOR CABLE



1ST WARRANTY REGISTRATION

IST would like to thank you for your recent purchase of our product line. Please complete the card below and either mail or fax it to our office so that we may start the warranty of your product and keep you up to date on the EPA regulations by fax. Again, thank you for your purchase and if you have any suggestions or comments, please feel free to contact our office.

COMPANY NAME :

ADDRESS :

CITY : |_|_|_|_|_|_|_|_|_|_|_|_|_|_| STATE/PROV.:

1 2 3 4 5 6 7 8 9 10

COUNTRY : |_|_|_|_|_|_|_|_|_|_|_|_|_|_| **ZIP CODE :** |_|_|_|_|_|_|_|_|_|_|_|_|_|_|

[illegible]

TEL. NUMBER: |__|__|__| |__|__|__| - |__|__|__|__|

FAX NUMBER: | | | | | - | | | | |

PURCHASE FROM:

DATE OF PURCHASE: |_|_| |_|_| |_|_|_|_|

Month Day Year

SERIAL NUMBER: |__|__| - |__|__|__| - |__|__|__|__| **MODEL NUMBER:** |__|__|__|__|__|__|

TYPE OF MEDIA USED: | | | | | | | | | | | | | | | | | | | | | |

Which factors most influenced your decision to purchase this ECO unit?

[illegible]

SUGGESTIONS ABOUT THE EQUIPMENT: _____

IMPORTANT! Please complete and return within 30 days after purchase to activate the warranty.

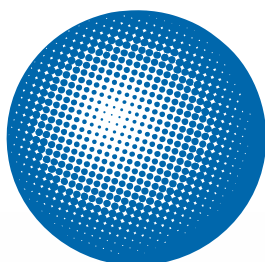
PLEASE SEND THE COMPLETED FORM TO :

IST - International Surface Technologies



INFORMATION / TECHNICAL ASSISTANCE

ISTblast is a registered trademark of:



International
Surface
Technologies
istsurface.com

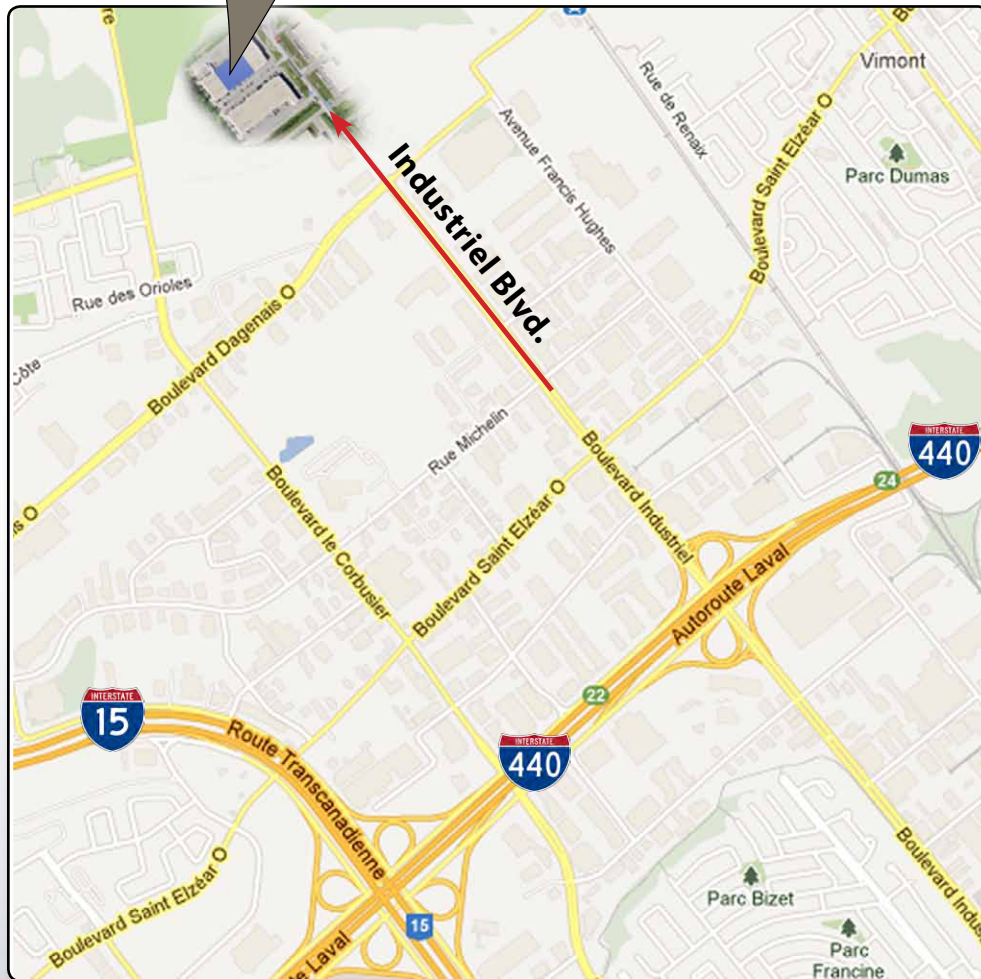
For more information, pricing or technical support, contact your local
IST distributor or call / fax to our Consumer Information numbers:

TEL.: 1 877 629-8202 & 450 963-4400 FAX : 450 963-5122

Or visit us at:
istsurface.com



OUR MAP LOCATION





ABOUT THE COMPANY

WHO WE ARE

IST is a leading industrial manufacturer of standard and custom engineered equipment for the surface treatment industry and the solvent recycling industry.

MISSION

IST is dedicated to being an innovative and trusted supplier in the conception, fabrication and distribution of surface treatment equipment and recycling equipment.

The products, technologies and industry expertise of IST are used in a wide range of manufacturing and industrial applications, including but not limited to :

- General Manufacturing
- Industrial Equipment
- Metal forming
- Aerospace and Aviation
- Rail and Transit
- Marine
- Automotive
- Petroleum
- Flexography (Labeling) & Lithography
- Wood finishing
- Power & Energy
- Pharmaceutical

