



GWMA 700 PURETECH



ACCESSORIES INCLUDED

- ✓ Air blow gun
- ✓ Adapter tubes and fitters
- ✓ Cleaning nozzles
- ✓ Trigger holding clamp (2)
- ✓ Blue Filter kit
- ✓ Instruction manual



Use only with Puretech
Hybrid Cleaner.

- Warranty
- Safety

- Operation
- Service Parts

- Accessory Information
- Registration Form

Complete cleaner # 350700

CE  II 2G T6

INSTRUCTION MANUAL

2018-03-09

TABLE OF CONTENTS

	Page
SETTING THE MACHINE UP	3
INSTALLATION OF CONTAINER.....	4
AIR INLET CONNECTION	4
USING THE MACHINE : MANUAL WASH.....	5
AUTO WASH	6
AUTO WASH (CONT'D)	7
MANUAL WASH	8
AVAILABLE ACCESSORIES	9
HEALTH & SAFETY DATA SHEET	10
ISTPURE LIMITED WARRANTY	11
WARRANTY REGISTRATION	12

SETTING THE MACHINE UP

PLEASE NOTE

It is advised that an air, dirt and water trap filter is fitted part as shown on the page 9. This will protect the valves and cylinder from dirt and water contamination.

It is possible to obtain 500/600 gun washes from a 5.3 gal drum of PURETECH cleaner but this is dependent upon how much paint material is left in your spray gun cup. We recommend regular changing of the solvent to ensure absolute cleanliness of your spray gun.

- Connect the machine to the air supply. All air connections are located on the right hand side of the machine when viewed from the front.
- Connect earth wire on rear of machine to suitable earthing point.

Air supply pressure : 40 to 90 psi. Thread size : 1/4" NPT

MAINTENANCE SCHEDULE

Frequency	EVERY MONTH
Action	<ul style="list-style-type: none">• Add two drops of air tool oil into the air side of the two pumps inside the machine.• Check the dirt and water trap and empty when necessary. DO NOT ALLOW THIS TO FILL AND BLOCK.

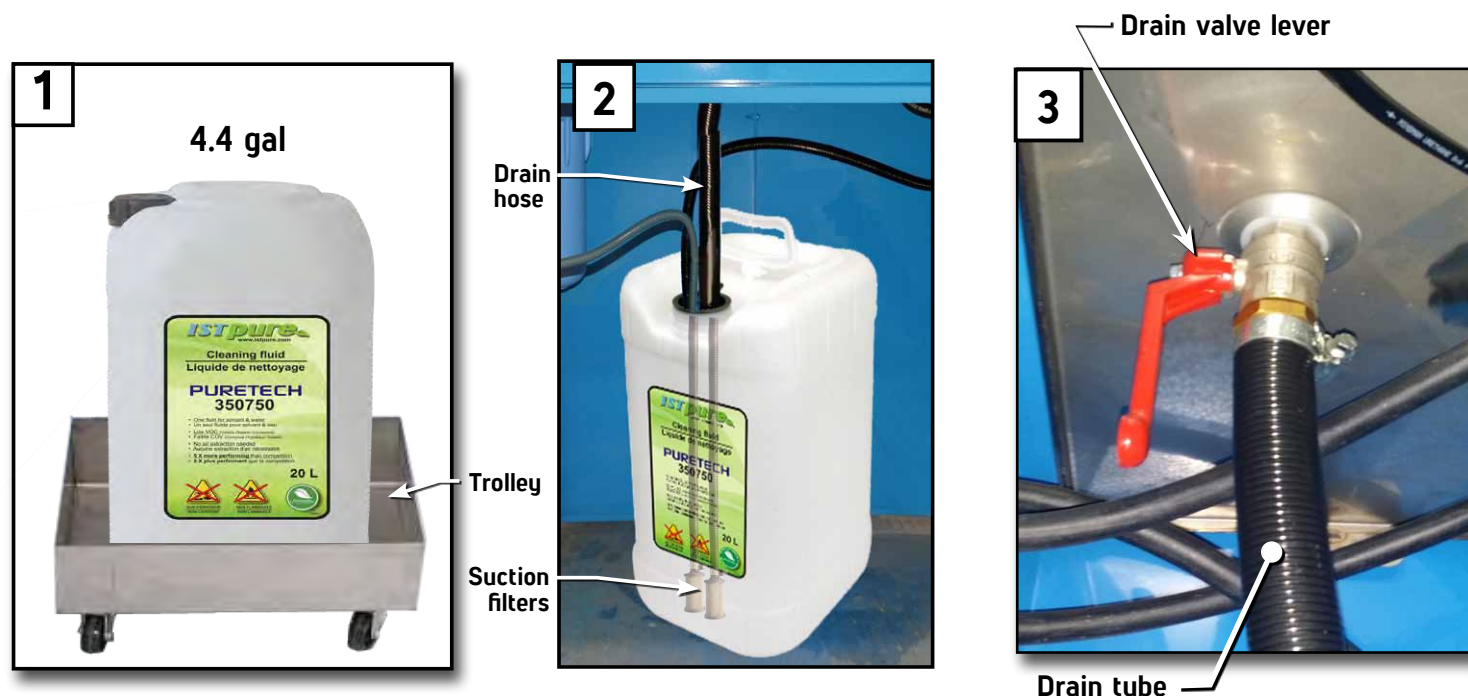
Frequency	EVERY 1 – 3 MONTHS
Action	<ul style="list-style-type: none">• Change the paint trap filter depending of contamination found under the work screen in the cleaning tank.

Frequency	EVERY 6 MONTHS
Action	<ul style="list-style-type: none">• Change the little blue filter cartidge (inline filter) or sooner depending on contamination; find the little blue filter in the base of the machine.

INSTALLATION OF CONTAINER

Place A 4.4 gal container of Puretech cleaner on the supplied trolley and slide it under the machine to collect the used fluid and water [1].

- Place the container at the center of the machine in order to align the drain hose with the opening of the container [1].
- Insert the two hoses with the suction filter and the drain hose into the container [2].
- Make sure the drain valve lever is in vertical position [3].



AIR INLET CONNECTION



We strongly recommend using a dirt / water trap and an air pressure regulator when using your GWMA700.

The pressure regulator and filter should be installed on the compressed air inlet of the clenaer as shown in the picture.

The air pressure should be set between **76 and 100 psi**.

USING THE MACHINE : MANUAL WASH

For the most efficient clean and use of the PURETECH cleaning fluid, ensure the spray gun and cup are emptied from any residual pain prior to use the GWMA700 PURETECH cleaner. We recommend to keep a waste paint drum at the side of the machine to reclaim waste paint.



1. Empty the paint cup and remove it from the spray gun (A).
2. Remove the air cap (B) and blow air through the spray gun to remove any residual paint inside (C).

WARNING

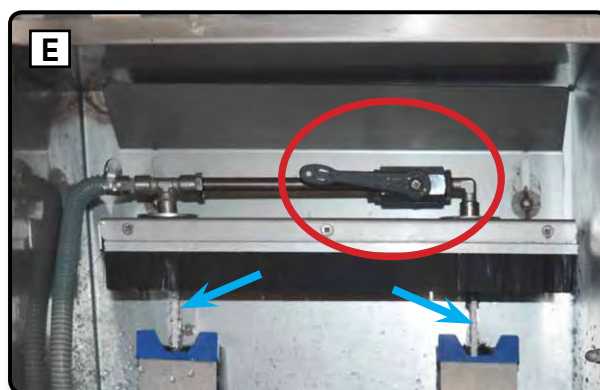
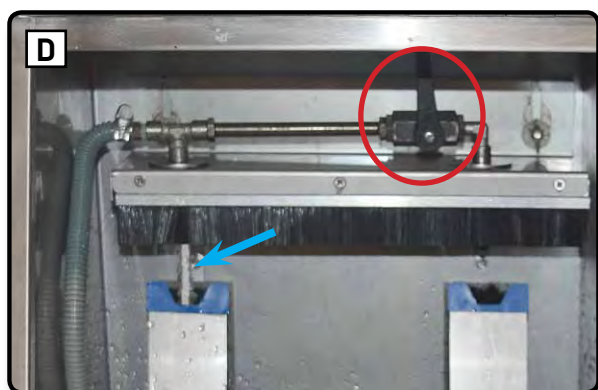
We advise that you DO NOT store the spray guns in the machine.

AUTO WASH

WARNING

- THE LID MUST BE CLOSED DURING OPERATION FOR YOUR SAFETY

1. A prewash of the spray gun interior and exterior is strongly recommended prior to run an auto wash cycle. Refer to the manual wash process at page 8 of the manual.
2. When cleaning only one spray gun, make sure the ON/OFF valve is in vertical position **(D)**. When cleaning two spray guns, the valve must be in horizontal position **(E)**.

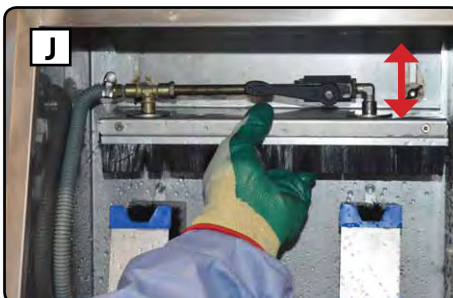
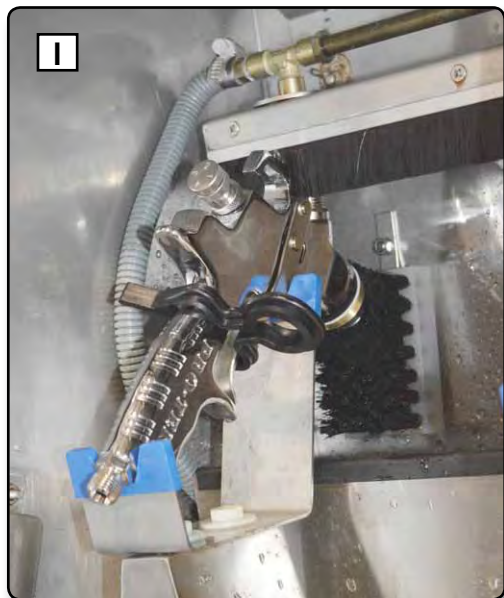
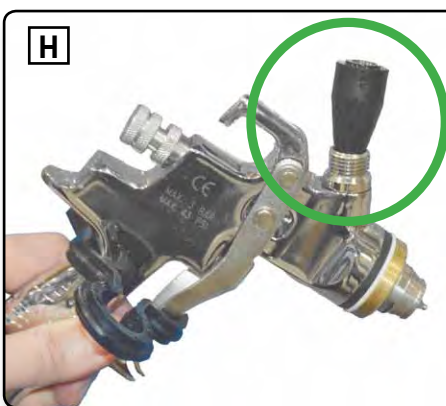


3. Lock the trigger using the trigger clip **(F)**.



AUTO WASH (CONT'D)

4. Position the spray gun onto the left hand "Easy Locate System" cradle when cleaning only one spray gun, or on both cradles when cleaning two guns. Push down the cradle with one hand (**G**), make sure the spray gun cup connector is well positioned under the GWMA700 cleaning nozzle (**H**), and release the cradle to lock the spray gun in place (**I**). If needed, adjust the height of the cleaning nozzles mount (**J**).



5. Close the lid and start the timer by pushing the **green** button. The cleaning process will stop automatically after 5 minutes. You can stop the process at any time by pressing on the **red** button (**K**).
6. Manually clean the spray gun air cap and other parts in the manual station while you wait the end of the automatic washing process (See Manual Wash Process on page 8).

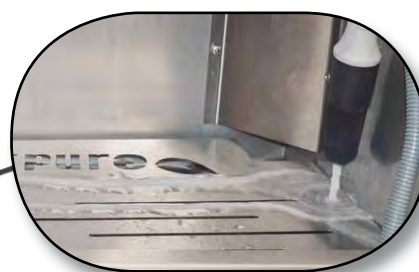
PLEASE NOTE

For best results spray guns should be cleaned as soon as possible after use.

MANUAL WASH

You can proceed to clean manually the cup and other parts while the automatic wash is processing.

1. Turn the manual mode switch clockwise to activate manual wash **(L)**. The PURETECH cleaning fluid will flow from the manual flow-through brush **(M)**.



2. Clean the spray gun(s), cup(s), air cap(s) and other disassembled parts using the manual flow-through brush **(N)**.



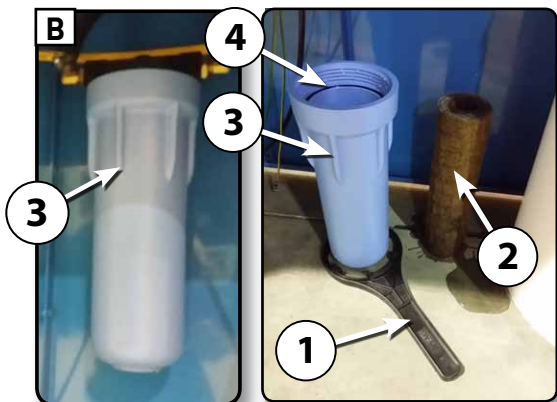
3. If needed, the sink can be used as a soaking tank when using supplied cap **(O)**.



4. Dry thoroughly the spray gun, the cup and other disassembled parts using the air blow gun **(P)**. No rinsing needed.



REPLACEMENT OF THE OPTIONAL "BLUE FILTER" CARTRIDGES



- Take the cartridge key **[1]** and gently unscrew the blue cap off the filter.
- Remove the old cartridge and place a new one **(2)** it into the blue cap **(3)**.
- Ensure the O-ring seal **(4)** is properly in place and screw the blue cap under the cartridge support and screw it firmly in place.
- The cartridge **(3)** must be in place as shown on the picture B.

NB : Blue Filter cartridge should be replaced when clogged, which may vary from one facility to another depending on the frequency of usage and the amount of paint/contaminants left in the equipment for cleaning. For better results, reduce as much as possible the amount of paint/contaminants sent through the washer.

It is recommended to verify the filter condition often (once a month during the first months of usage) and to replace it at least once a year. Clogged filter must be replaced immediately to provide better cleaning performance and to avoid machine breakage.

AVAILABLE ACCESSORIES

Description	Pressure Gauge (# 311002)	Gate Valve	¼" Pressure Regulator with filter (# 324562)
Visual			

TECHNICAL SPECIFICATIONS	
Washing Station(s)	Manual / Automatic
Washing Station capacity	2 Paint Guns / 2 Cups
Dimensions (H x W x D)	58" x 39" x 16"
Weight	143 lb.
Air input	76/100 psi
Air input connection	¼" NPT
Warranty Parts / Pump	2 years / 5 years
Product No.	350700

HEALTH & SAFETY DATA SHEET

PRODUCT NAME USES	Removal of paint from paint spray guns, cups and hoses.
GENERAL PRECAUTIONS	<p>Before operating this spray gun washer, operators must be familiar with the correct operating procedures as detailed in the manufacturer's Instruction Manual.</p> <p>Do not tamper with the safety lid switch, which prevents the unit operating in the cleaning mode when the lid is open.</p> <p>Close drain valve and close lid when the unit is not in use. All solvent should be drained from the cleaning tank before closing the drain valve.</p> <p>Inspect solvent storage compartment daily to ensure there is no leaks from the solvent containers.</p> <p>Replace solvent filter pad frequently (bimonthly replacement of the filter pad is recommended)</p> <p>Always disconnect the air source before performing maintenance tasks.</p>
FIRE HAZARDS	<p>Do not smoke or use other ignition sources near the cabinet.</p> <p>E.g. no hot work, such as welding.</p>
HEALTH HAZARDS	<p>The cleaning solvent used will contain substances hazardous to health, typically acetone, methanol, white spirit, xylene and toluene. Air monitoring carried out with a recommended cleaning thinner has shown that concentrations do not exceed exposure limits. Levels were less than 50% of the mixed short-term exposure limit when the lid was open for removal of the spray gun, cups and hoses and just 6% of the limit during the cleaning cycle. Substances in the solvent however can be absorbed through the skin, see personal protection equipment.</p>
VENTILATION	<p>A local exhaust ventilation system as supplied with the machines, should be installed so that vapours are safely vented to atmosphere away from windows and other air inlets.</p>
PERSONAL PROTECTION EQUIPMENT	<p>Suitable gloves must be worn when replacing and removing spray guns from the cleaning machine. Most glove manufacturers recommend Nitrile gloves for the solvent xylene and toluene, which can be absorbed through the skin.</p>
WASTE DISPOSAL	<p>Waste solvent must be removed by a registered carrier to a disposal or recovery facility licensed to receive waste solvent.</p>
EMERGENCY ACTION	<p>FIRE</p> <p>In case of fire, use a form of dry powder extinguishing agent. Cool solvent drums exposed to fire with water spray.</p> <p>FIRST AID</p> <p>Eye contact with solvent- irrigate with clean water. Skin contact with solvent remove contaminated clothing, wash skin thoroughly with soap and water. Excess inhalation of solvent vapours – Remove to fresh air, seek medical attention</p> <p>Accidental Ingestion – Do not induce vomiting, seek medical attention.</p> <p>SPILLAGE OF SOLVENT</p> <p>Contain and collect with non-combustible materials E.g. sand and earth. Do not allow to enter drains. Exclude sources of ignition. Ventilate area.</p>

ISTPURE LIMITED WARRANTY

IST warrants all equipment led in this manual which is manufactured by IST and bearing its name, to be free from defects in material and workmanship on the date of sale by an authorized IST distributor to the original purchaser for use. Notwithstanding any special, extended or limited warranty published by IST will, for a period of TWENTY (24) months from the date of sale, and SIXTY (60) months from the date of sale for the pump to repair or replace any part of the equipment determined by IST to be defective. This warranty applies only when the equipment is installed, operated and maintained in accordance with IST's written recommendations.

This warranty does not cover, and IST shall not be liable for general wear and tear, or any malfunction, damage or wear caused by faulty installation, misapplication, abrasion, corrosion, inadequate or improper maintenance, negligence, accident, tampering, or substitution of non-IST component parts. Nor shall IST be liable for malfunction, damage or wear caused by the incompatibility with IST equipment with structures, accessories, equipment or materials not supplied by IST, or the improper design, manufacture, installation, operation or maintenance of structures, accessories, equipment or materials not supplied by IST.

This warranty is conditioned upon the prepaid return of the equipment claimed to be defective to an authorized IST distributor for verification of the claimed defect. If the claimed defect is verified, IST will repair or replace free of charge any defective parts. The equipment will be returned to the original purchaser, transportation prepaid. If the inspection of the equipment does not disclose any defect in material or workmanship, repairs will be made at a reasonable charge, which charges may include the costs of parts, labor, and transportation.

THIS WARRANTY IS EXCLUSIVE, AND IS IN LIEU OF ANY OTHER WARRANTIES, EXPRESSED OR IMPLIED, INCLUDING BUT NOT LIMITED TO WARRANTY OF MERCHANTABILITY OR WARRANTY OF FITNESS FOR A PARTICULAR PURPOSE.

IST's sole obligation and the buyer's sole remedy for any breach of warranty shall be as set forth above. The buyer agrees that no other remedy (including, but not limited to, incidental or consequential damages for lost profits, lost sales, injury to person or property, or any other incidental or consequential loss) shall be available. Any action for breach of warranty must be brought forward within one (1) year of the date of sale.

IST MAKES NO WARRANTY, AND DISCLAIMS ALL IMPLIED WARRANTIES OF MERCHANTABILITY AND FITNESS FOR A PARTICULAR PURPOSE, IN CONNECTION WITH ACCESSORIES, EQUIPMENT, MATERIALS OR COMPONENTS SOLD BUT NOT MANUFACTURED BY IST. These items sold, but not manufactured by IST (such as electric motors, switches, hose, etc.), are subject to the warranty, if any, of their manufacturer. IST will provide the purchaser with reasonable assistance in making any claim for breach of these warranties.

LIMITATION OF LIABILITY

In no event will IST be liable for indirect, incidental, special or consequential damages resulting from IST supplying equipment hereunder, or the furnishing, performance, or use of any products or other goods sold hereto, whether due to a breach of contract, breach of warranty, the negligence of IST, or otherwise.

Report all accidents or "near misses" which involve IST products to :
- Technical Assistance

The following items are not covered under the IST warranty policy :
- Parts or chassis replacement due to normal wears.

Report all accidents or negligence involving IST products to our Service Department :

1 877 629-8202

WARRANTY REGISTRATION

ISTpure would like to thank you for your recent purchase of our product line. Please complete the card below and either mail or fax it to our office so that we may start the warranty of your product and keep you up to date on the EPA regulations by fax. Again, thank you for your purchase and if you have any suggestions or comments, please feel free to contact our office.

COMPANY NAME :

[illegible]

CITY : _____ STATE/PROV. : _____

COUNTRY : |_|_|_|_|_|_|_|_|_| POSTAL/ZIP CODE : |_|_|_| |_|_|

[illegible]

TEL. NUMBER: [] [] [] [] [] [] - [] [] [] [] [] [] FAX NUMBER: [] [] [] [] [] [] - [] [] [] [] [] []

[illegible]

DATE OF PURCHASE: / /

Month Day Year

SERIAL NUMBER: | | | | - | | | | | - | | | | | MODEL NUMBER: | 3 | 5 | 0 | 7 | 0 | 0 |

[illegible]

Which factors most influenced your decision to purchase this ISTpure unit?

SUGGESTIONS ABOUT THE EQUIPMENT:

IMPORTANT! Please complete and return within 30 days after purchase to activate the warranty.

PLEASE SEND THE COMPLETED FORM VIA EMAIL OR FAX TO:

INFO@ISTSURFACE.COM