



GWA 200



Floor stand (Optional)



Standard wall mounting shown

ACCESSORIES INCLUDED

- ✓ Adapter tubes and fitters
- ✓ Trigger holding clamp
- ✓ Exhaust for solvent fume extraction (2)
- ✓ Wall Mounting Brackets
- ✓ "Blue Filter" Kit
- ✓ Instruction Manual
- ✓ Air Blow Gun

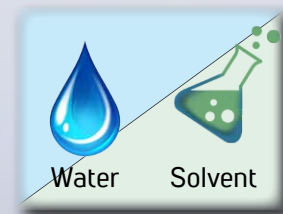




TABLE OF CONTENTS

	Page
SETTING THE MACHINE UP	3
INSTALLATION OF CONTAINERS	4
EXHAUST INSTALLATION	5
SOLVENT CONTAINER INSTALLATION	5
WALL MOUNTING INSTALLATION	6
FLOOR STAND INSTALLATION (OPTIONAL)	7
USING THE MACHINE	8
USING THE MACHINE (CONT'D)	9
HEALTH & SAFETY DATA SHEET	10
OPTIONAL ACCESSORIES & PARTS, AIR CIRCUIT PIPING, TECHNICAL SPECIFICATIONS.....	11
EXPLODED VIEW & PARTS LIST	12
ISTPAINT LIMITED WARRANTY	13
WARRANTY REGISTRATION.....	14
INFORMATION / TECHNICAL ASSISTANCE	15
OUR MISSION.....	16



SETTING THE MACHINE UP

PLEASE NOTE

**It is advised that an air, dirt and water trap filter is fitted part as shown on the page 11
This will protect the valves and cylinder from dirt and water contamination.**

It is possible to obtain 100/150 gun washes from a 23 litres drum of solvent but this is dependent upon how much paint material is left in your spray gun cup. We recommend regular changing of the solvent to ensure absolute cleanliness of your spray gun.

1. Position machine in a well ventilated area. The extraction outlet will accept 3" hose and should be connected to an existing system or taken to the external part of a building and vented via the atmosphere. Hose and a range of adaptors are available direct from ISTpaint.
2. Connect the machine to the air supply. All air connections are located on the right hand side of the machine when viewed from the front.
3. Connect earth wire on rear of machine to suitable earthing point.

Air supply pressure : 40 to 90 psi, Thread size: 1/4" NPT

MAINTENANCE SCHEDULE

Frequency	DAILY OPERATION & MAINTENANCE
Action	<ul style="list-style-type: none"> ○ Clean the suction filter every time you replace the solvent drums. ○ Check the dirt and water trap and empty when necessary. DO NOT ALLOW THIS TO FILL AND BLOCK

Frequency	EVERY MONTH
Action	<ul style="list-style-type: none"> ○ Add two drops of air tool oil into the air side of the two pumps inside the machine.

Frequency	EVERY 6 MONTHS
Action	<ul style="list-style-type: none"> ○ Change the blue filter cartridge (inline filter) and O-Ring gasket or sooner depending on contamination.

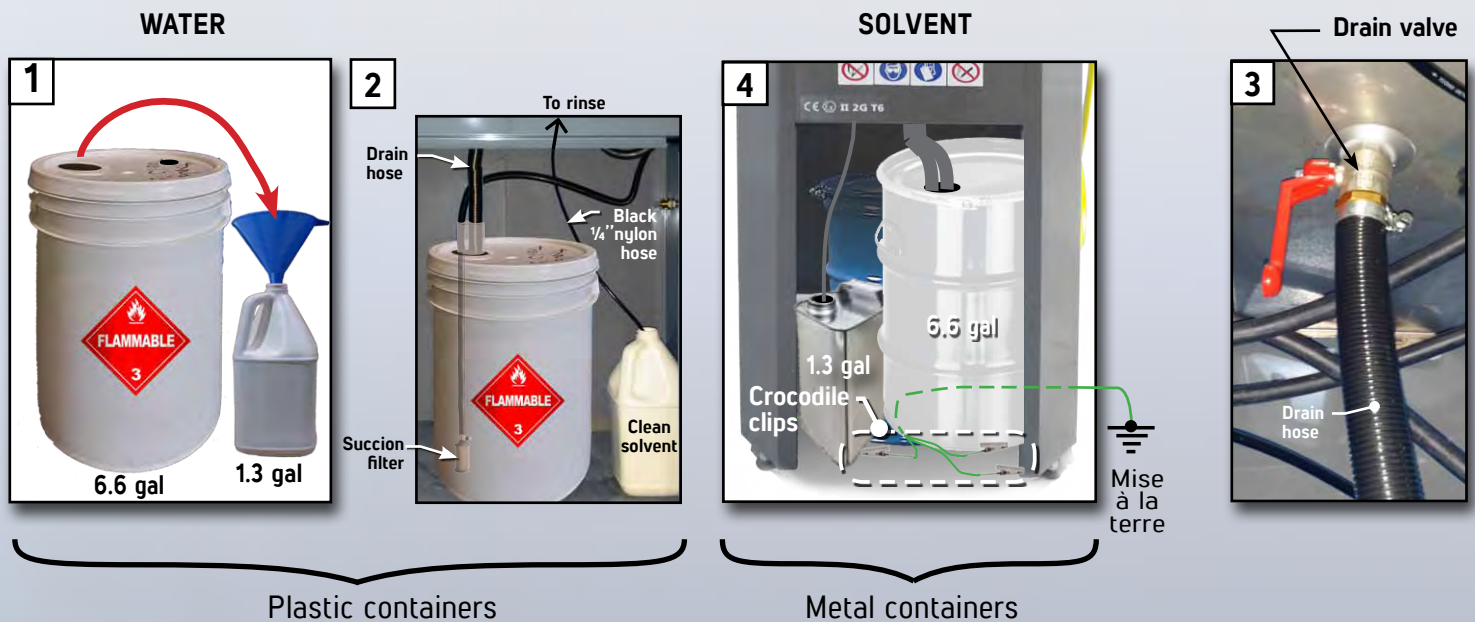


INSTALLATION OF CONTAINERS

WARNING
DO NOT SMOKE OR USE OPEN FLAME NEAR CABINET.

In order to use the clean rinse feature, you will need one 6.6 gal drum of clean solvent and one 1.3 gal empty container.

- Take a 6.6 gal drum of clean solvent, remove 1.3 gal and fill an empty 1.3 gal container [1]
- Insert hose with suction filter into the 6.6 gal drum of solvent and enter drain tube [2].
- Push this solvent container/s under machine aligning filler neck with bottom part of flexible hose [2].
- Place the full 1.3 gal (clean solvent) container under the centre of the machine next to the 6.6 gal drum of solvent and insert the black ¼" nylon tube with wire clip in to the full 1.3 gal container [2].
- Turn drain valve lever to vertical position [3].
- Underneath the machine at the rear are the earthing wire(s), the crocodile clip(s) **must be attached to any metal solvent container(s) if used (these are not supplied by ISTpaint)** [4]





EXHAUST SOLVENT VAPOURS INSTALLATION

All exhaust have been removed for shipment.

Solvent Cleaning Setup

By default, the washer is set for solvent cleaning. The ventilation fume extraction system will activate upon opening of the lid to prevent users from being exposed to solvent fumes. (Fig.2-3)



Waterborne Cleaning Setup

To set up the washer for waterborne cleaning, simply replace the air jet nozzle with the cap. This will disable the ventilation system and reduce power consumption and maintenance costs of the washer.

Jets can be twisted toward the back of the tank or front for fitting and removal

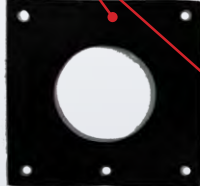
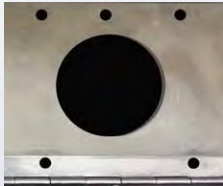


Mount exhaust as shown in this picture, dome nuts and spring washers on the top of the tank.



Inside the tank fit the neoprene gasket in between the exhaust and tank and fit the baffle last.

Gasket & hardware
Fig. 1



Exhaust pipe



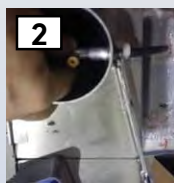
1. Fix the exhaust pipe on top of the cabinet using supplied hardware and gasket (Fig.1).

Fig. 2

Fume extraction air jet



Air hose



2. Insert the ventilation fume extraction air jet inside the exhaust pipe (Fig.2-1) and fix it to the air hose using a flat wrench (Fig.2-2) until it is firmly screwed in place (Fig.2-3).

FUME EXHAUST INSTALLATION



Evacuate fume outside of the building or link the exhaust to the building air evacuation system using a 3" flexible aluminum duct.

No additional ventilation system required.



WALL MOUNTING INSTALLATION

PLEASE NOTE

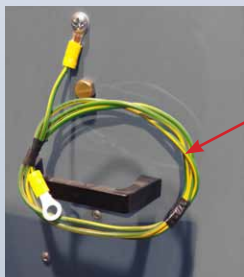
Ensure the machine is positioned in a well-ventilated area. If using the solvent option, ensure that there is suitable ventilation nearby to connect the exhaust system (The machine will self-vent to a maximum distance of 16,4').



1. Fix one mounting bracket to the wall with the bolt notches facing up. This bracket will be your upper bracket.
2. Fix all four mounting bolts to the back of the machine in the threaded holes. Do not tighten.
3. Hang the machine on the top bracket by inserting the top bolts in the bracket.
4. Take the second bracket and position it in place by fixing it to the bottom bolts, with the bolt notches facing up.
5. Mark the bracket position.



6. Remove the unit from the wall and drill the holes and fix the second bracket.
7. Once the two brackets are firmly fixed in the wall, hang the machine on all four bolt notches, and tighten the bolts to secure the unit.
8. Fix the ground wire to an earth point.
9. Our extraction exhaust is 3" in diameter. Attach suitable flexible/ or rigid hosing to the exhaust and ensure the exhaust then vents to atmosphere, this can be through existing extraction systems.



Earth wire

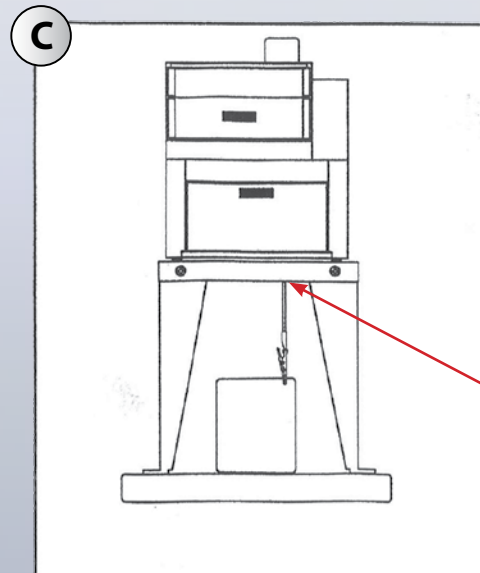
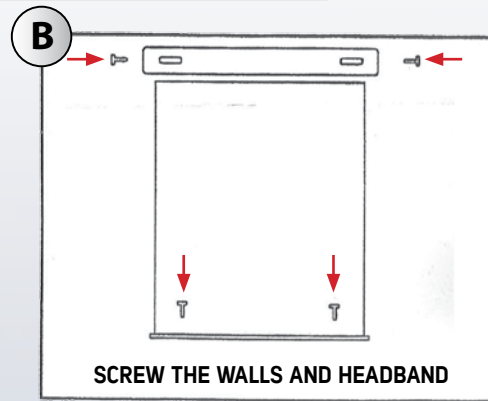
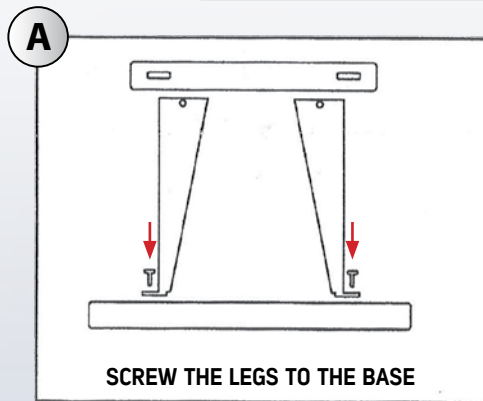
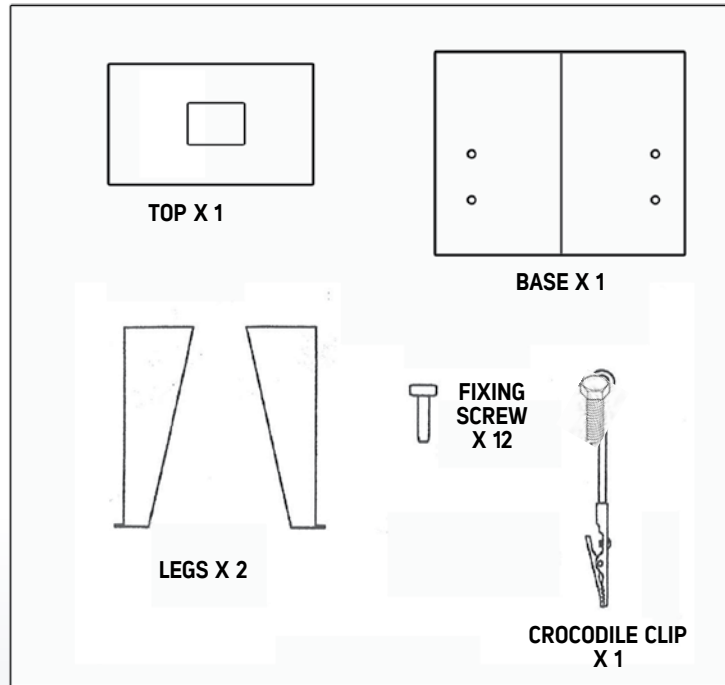


Flexible hosing



FLOOR STAND INSTALLATION (OPTIONAL)

WHAT'S INCLUDED :





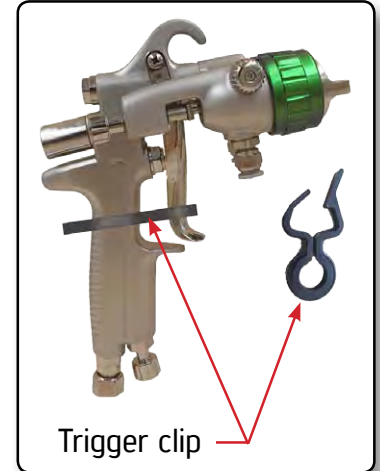
USING THE MACHINE

PLEASE NOTE

For best results spray guns should be cleaned as soon as possible after use.

AUTOMATIC WASH

1. Any paint left in cup/pot should be emptied into a waste container or stored for future use.
2. Place paint cup/pot into machine over the single square nozzle jets.
3. The air cap of the spray gun can either be loosened or removed completely and put into machine.
4. Fit the trigger clip to trigger of spray gun. (Look at the picture on right.)
5. Install the spray gun into machine. See Diagram A.



Gravity Fed Spray Gun



1 Push down the bracket

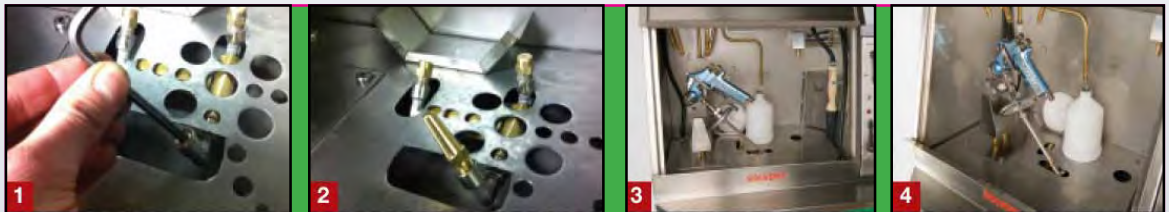
2 Locate the spray gun

3 Release the bracket locking the spray gun into position

4 Start Auto Wash operation



Suction Fed Spray Gun



1 Remove the spray blank

2 Place the nozzle provided in the fitting

3 Position the suction fed gun shown in the picture

4 Start Auto Wash operation

6. Close lid.
7. Turn timer knob clockwise (The machine will run automatically for approximately 4 minutes).
8. Upon completion open the lid and remove the spray guns from the machine. We advise that you **DO NOT** store the spray guns in the machine.

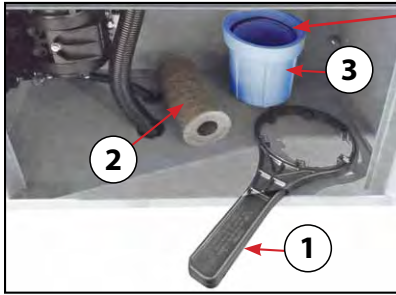
WARNING

- THE LID MUST BE LOCKED DURING OPERATION FOR YOUR SAFETY
- THE LOCK MUST NOT BE REMOVED
- TO UNLOCK SWITCH OFF THE MACHINE



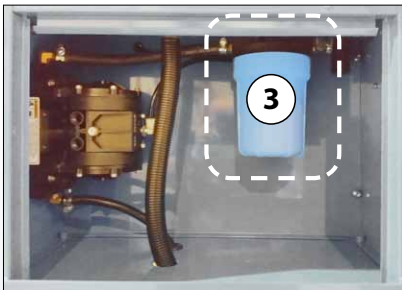
USING THE MACHINE (CONT'D)

REPLACEMENT OF THE "BLUE FILTER" CARTRIDGE



O-Ring

- Take the cartridge key **(1)** and gently unscrew the blue cap off the filter.
- Remove the old cartridge and place a new one ***(2) (# 324816 for a pack of 5)** into the blue cap **(3)**.
- Ensure the O-ring is properly in place and screw the blue cap **(3)** under the cartridge support and screw it firmly in place with the cartridge key **(1)**.

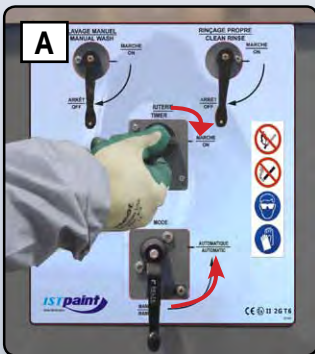


- The cartridge blue cap **(3)** must be in place as shown on this picture on left.

NB : Blue Filter cartridge should be replaced when clogged, which may vary from one facility to another depending on the frequency of usage and the amount of paint/contaminants left in the equipment for cleaning. For better results, reduce as much as possible the amount of paint/contaminants sent through the washer.

It is recommended to verify the filter condition often (once a month during the first months of usage) and to replace it at least once a year. Clogged filter must be replaced immediately to provide better cleaning performance and to avoid machine breakage.

AUTOMATIC WASH



Close the lid, turn the wash MODE selection valve to AUTOMATIC and turn the timer knob clockwise to start the cycle **(A)**. The cleaning process will stop automatically after 4 minutes. The lid of the cleaning station must be closed in order to deactivate the security system **(B)**.



HEALTH & SAFETY DATA SHEET

PRODUCT NAME USES	Removal of paint from paint spray guns, cups and hoses.
GENERAL PRECAUTIONS	<p>Before operating this spray gun washer, operators must be familiar with the correct operating procedures as detailed in the manufacturer's Instruction Manual.</p> <p>Do not tamper with the safety lid switch, which prevents the unit operating in the cleaning mode when the lid is open.</p> <p>Close drain valve and close lid when the unit is not in use. All solvent should be drained from the cleaning tank before closing the drain valve.</p> <p>Inspect solvent storage compartment daily to ensure there is no leaks from the solvent containers.</p> <p>Replace solvent filter pad frequently (bimonthly replacement of the filter pad is recommended)</p> <p>Always disconnect the air source before performing maintenance tasks.</p>
FIRE HAZARDS	<p>Do not smoke or use other ignition sources near the cabinet. E.g. no hot work, such as welding.</p>
HEALTH HAZARDS	<p>The cleaning solvent used will contain substances hazardous to health, typically acetone, methanol, white spirit, xylene and toluene. Air monitoring carried out with a recommended cleaning thinner has shown that concentrations do not exceed exposure limits. Levels were less than 50% of the mixed short-term exposure limit when the lid was open for removal of the spray gun, cups and hoses and just 6% of the limit during the cleaning cycle. Substances in the solvent however can be absorbed through the skin, see personal protection equipment.</p>
VENTILATION	<p>A local exhaust ventilation system as supplied with the machines, should be installed so that vapours are safely vented to atmosphere away from windows and other air inlets.</p>
PERSONAL PROTECTION EQUIPMENT	<p>Suitable gloves must be worn when replacing and removing spray guns from the cleaning machine. Most glove manufacturers recommend Nitrile gloves for the solvent xylene and toluene, which can be absorbed through the skin.</p>
WASTE DISPOSAL	<p>Waste solvent must be removed by a registered carrier to a disposal or recovery facility licensed to receive waste solvent.</p>
EMERGENCY ACTION	<p>FIRE In case of fire, use a form of dry powder extinguishing agent. Cool solvent drums exposed to fire with water spray.</p> <p>FIRST AID Eye contact with solvent- irrigate with clean water. Skin contact with solvent remove contaminated clothing, wash skin thoroughly with soap and water. Excess inhalation of solvent vapours – Remove to fresh air, seek medical attention</p> <p>Accidental Ingestion – Do not induce vomiting, seek medical attention.</p> <p>SPILLAGE OF SOLVENT Contain and collect with non-combustible materials E.g. sand and earth. Do not allow to enter drains. Exclude sources of ignition. Ventilate area.</p>

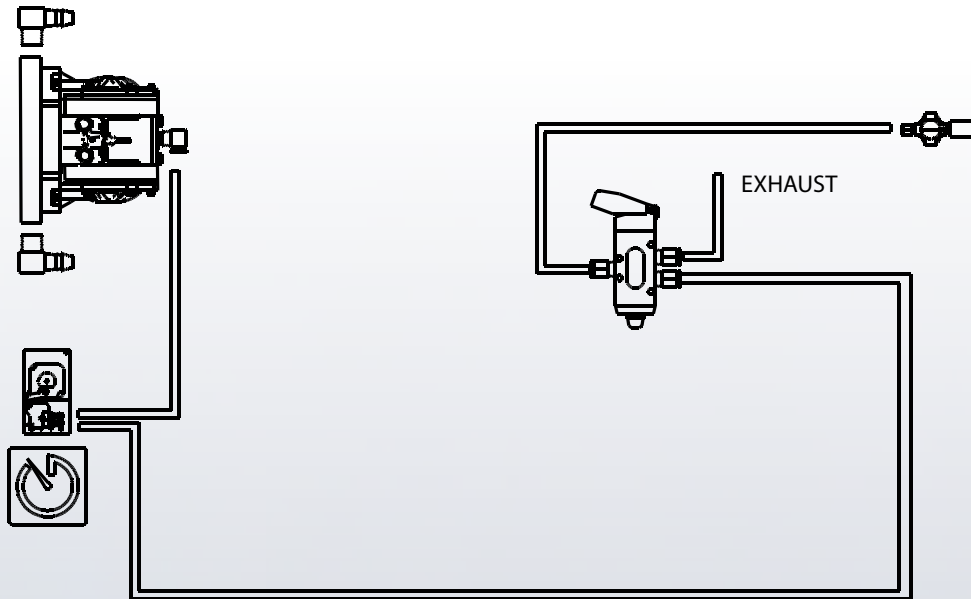


OPTIONAL ACCESSORIES & PARTS

FLOOR STAND



AIR CIRCUIT PIPING



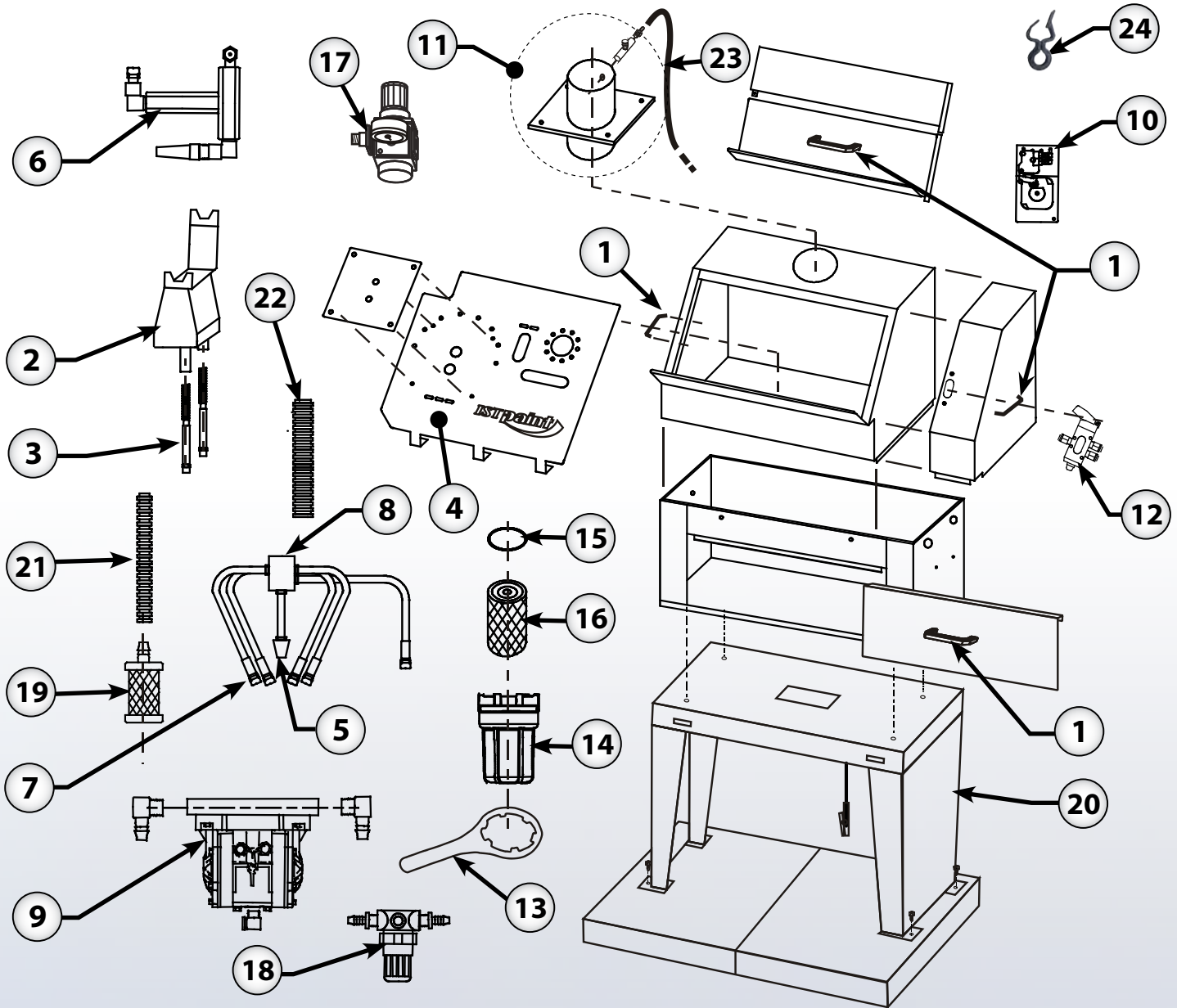
TECHNICAL SPECIFICATIONS

Washing Station Capacity	1 Paint Gun / 1 Cup
Dimensions (H x W x D)	*34" x 19" x 12"
Weight	42 lb
Air input	40 / 90 psi
Air consumption	< 2 cfm
Air input connection	1/4" NPT
Warranty Parts / Pump	2 years / 5 years
Product number	350200

* 58" with floor stand



EXPLODED VIEW & PARTS LIST



ID	Part #	Description
1	324822	Black Door Handle
2	NPN	Easy-Locate Gun Mounting Ass'y
3	NPN	Spring
4	NPN	Workscreen
5	324804	Wide Angle Jet
6	NPN	Pot Lid Wash Assembly
7	NPN	Plastic Nozzle
8	NPN	Automatic Cleaning Spray Bar Ass'y
9	324800	Husky 205 Pump
10	324805	Timer Assembly
11	324824	Fume Extractor
12	324825	Lid Lock Valve Assembly

ID	Part #	Description
13	324839	Clamping Tool for Blue Filter
14	NPN	Small Blue Filter Housing
15	324840	O-Ring for Blue Filter
16	324816	Half 10 Micron Cartridge Filter (pkg of 5)
17	324843	Pressure Regulator & Gauge (for Blow Gun)
18	324826	50 psi Gunwash Pressure Regulator
19	324803	Pail Suction Filter
20	324836	Floor Stand
21	324842	½" Corrugated Hose (sold by foot)
22	324817	1" Corrugated Hose for Drain (sold by foot)
23	324835	8 mm Air Hose for Fume Extractor (sold by foot)
24	324806	Nylon Trigger Clip



IST LIMITED WARRANTY

IST warrants all equipment led in this manual which is manufactured by IST and bearing its name, to be free from defects in material and workmanship on the date of sale by an authorized IST distributor to the original purchaser for use. Not with standing any special, extended or limited warranty published by IST will, for a period of TWENTY FOUR (24) months for parts and SIXTY (60) months for the pump from the date of sale, repair or replace any part of the equipment determined by IST to be defective. This warranty applies only when the equipment is installed, operated and maintained in accordance with IST's written recommendations.

This warranty does not cover, and IST shall not be liable for general wear and tear, or any malfunction, damage or wear caused by faulty installation, misapplication, abrasion, corrosion, inadequate or improper maintenance, negligence, accident, tampering, or substitution of non-IST component parts. Nor shall IST be liable for malfunction, damage or wear caused by the incompatibility with IST equipment with structures, accessories, equipment or materials not supplied by IST, or the improper design, manufacture, installation, operation or maintenance of structures, accessories, equipment or materials not supplied by IST.

This warranty is conditioned upon the prepaid return of the equipment claimed to be defective to an authorized IST distributor for verification of the claimed defect. If the claimed defect is verified, IST will repair or replace free of charge any defective parts. The equipment will be returned to the original purchaser, transportation prepaid. If the inspection of the equipment does not disclose any defect in material or workmanship, repairs will be made at a reasonable charge, which charges may include the costs of parts, labor, and transportation.

THIS WARRANTY IS EXCLUSIVE, AND IS IN LIEU OF ANY OTHER WARRANTIES, EXPRESSED OR IMPLIED, INCLUDING BUT NOT LIMITED TO WARRANTY OF MERCHANTABILITY OR WARRANTY OF FITNESS FOR A PARTICULAR PURPOSE.

IST's sole obligation and the buyer's sole remedy for any breach of warranty shall be as set forth above. The buyer agrees that no other remedy (including, but not limited to, incidental or consequential damages for lost profits, lost sales, injury to person or property, or any other incidental or consequential loss) shall be available. Any action for breach of warranty must be brought forward within one (1) year of the date of sale.

IST MAKES NO WARRANTY, AND DISCLAIMS ALL IMPLIED WARRANTIES OF MERCHANTABILITY AND FITNESS FOR A PARTICULAR PURPOSE, IN CONNECTION WITH ACCESSORIES, EQUIPMENT, MATERIALS OR COMPONENTS SOLD BUT NOT MANUFACTURED BY IST. These items sold, but not manufactured by IST (such as electric motors, switches, hose, etc.), are subject to the warranty, if any, of their manufacturer. IST will provide the purchaser with reasonable assistance in making any claim for breach of these warranties.

LIMITATION OF LIABILITY

In no event will IST be liable for indirect, incidental, special or consequential damages resulting from IST supplying equipment hereunder, or the furnishing, performance, or use of any products or other goods sold hereto, whether due to a breach of contract, breach of warranty, the negligence of IST, or otherwise.

Report all accidents or "near misses" which involve IST products to :
- Technical Assistance

The following items are not covered under the IST warranty policy :
- Parts or chassis replacement due to normal wears.

Report all accidents or negligence involving IST products to our Service Department :

1 877 629-8202



WARRANTY REGISTRATION

ISTpaint would like to thank you for your recent purchase of our product line. Please complete the card below and either mail or fax it to our office so that we may start the warranty of your product and keep you up to date on the EPA regulations by fax. Again, thank you for your purchase and if you have any suggestions or comments, please feel free to contact our office.

COMPANY NAME : _____

ADDRESS : _____

CITY : _____ STATE/PROV. : _____

COUNTRY : _____ POSTAL/ZIP CODE : _____

CONTACT : _____

TEL. NUMBER: _____ FAX NUMBER: _____

PURCHASE FROM: _____

DATE OF PURCHASE: _____

Month Day Year

SERIAL NUMBER: _____ MODEL NUMBER: 3|5|0|2|0|0|

TYPE OF FLUID USED: _____

Which factors most influenced your decision to purchase this ISTpaint unit?

SUGGESTIONS ABOUT THE EQUIPMENT:

IMPORTANT! Please complete and return within 30 days after purchase to activate the warranty.

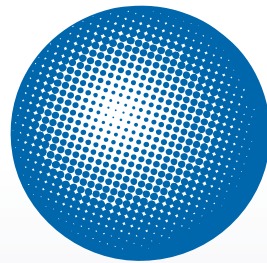
PLEASE SEND THE COMPLETED FORM VIA EMAIL OR FAX TO :

INFO@ISTSURFACE.COM OR 450 963-5122



INFORMATION / TECHNICAL ASSISTANCE

ISTpaint is a registered trademark of:



**International
Surface
Technologies**
istsurface.com

For more information, pricing or technical support, contact your local IST distributor or call / fax to our Consumer Information

TEL.: 1 877 629-8202 & 450 963-4400 FAX : 450 963-5122

Or visit us at:
istsurface.com



ABOUT THE COMPANY

WHO WE ARE

IST is a leading industrial manufacturer of standard and custom engineered equipment for the surface treatment industry and the solvent recycling industry.

MISSION

IST is dedicated to being an innovative and trusted supplier in the conception, fabrication and distribution of surface treatment equipment and recycling equipment.

The success of our mission relies on the following core values :

Innovation - Integrity - Quality

The products, technologies and industry expertise of IST are used in a wide range of manufacturing and industrial applications, including but not limited to :

- General Manufacturing
- Industrial Equipment
- Metal forming
- Aerospace and Aviation
- Rail and Transit
- Marine
- Automotive
- Petroleum
- Flexography (labelling) & Lithography
- Wood finishing
- Power & Energy
- Pharmaceutical

