



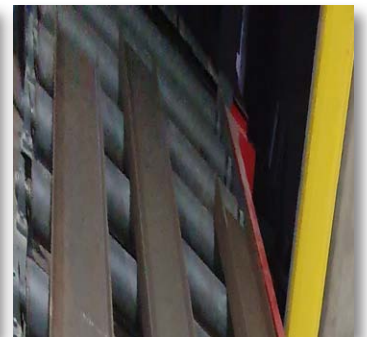
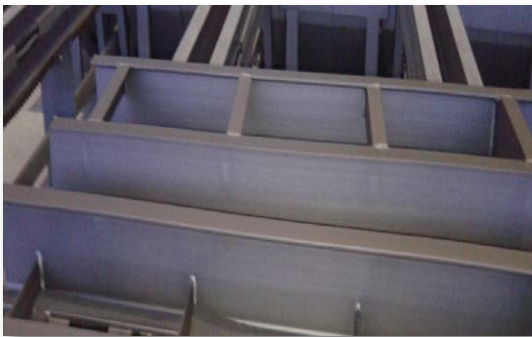
P - PLATE BLASTER WITH ROLLER CONVEYOR

Continued shot blasting of the corroded layer and filings from sheet metal, sections, simple constructions and small shafts with different types of abrasive, easier and faster cutting and welding of steel semi-finished products with clean surface, multiple increase in durability of surface-protective applications, e.g. colour, enamel, improving structure of the surface of treated objects.



DESCRIPTION

Treated objects move through the machine on a roller conveyor. Turbines made from wear-resistant materials with power from 5.5 to 30 kW provide efficient shot blasting. The shot blasting part of the machine's robust housing is protected by wear resistant shields made from manganese steel. Entry seals chamber with series of rubber screens and the exit cleaning chamber keep the abrasive inside the machine. Rotating brush and high-pressure fan remove the abrasive from the treated object before it exits the machine. Screw conveyors, an elevator and sand cleaner provide returning and continuing cleaning of the abrasive. Standard equipment includes: PLC Klockner Moeller or Siemens, display, automatic or manual mode, automatic start-up of turbine, working hours counter, variable frequency drive of the cylinder drive, etc. In addition to the above mentioned machines we also offer already developed machines P-500, P-1000 x 800, P-2000 x 1000, P-2000 x \varnothing 1500, P-2500 x 1000, P-2800 x 1500, P-3200 x 1600, P -3500 x 1200 and special machines for shot blasting rod materials, tubes, steel bottles (conical cylinders), vats and special machines by order. Machines may be built into highly productive lines for basic colour application, including drying chamber, automatic colouring chamber and drying tunnel.





TECHNICAL DATA - MACHINE TYPE

Machine type -->	P-600x400	P-1000x400	P-1250x400	P-1500x400
Max working width for plates (inch)	23.6	39.4	49.2	59.1
Max working width for profiles (inch)	15.7	27.6	31.5	47.2
Max working height for profiles (inch)	15.7			
Pass speed (ft/min)	1.6-6.2	1.6-5.2	1.6-4.6	1.6-4.9
Max load per m on roller conveyor (lb/ft)	7,233			10,850
Throwing wheel power (hp)	10 (15, 20)	15 (15, 20)	15 (20)	20
Number of wheels required (included basic motor)	4			
Diameter of throwing wheels (inch)	ir-12.6			
Machine weight (lb)	15,432	19,842	24,692	34,172
Exhausten air quantity (cfm)	194,231	282,517	300,175	353,147
Integrated filter with filtration area (ft ²)	646	969	969	1,453
Abrasive blow off chamber with incl. brush (manual bursh height adjustment by press button)	included			
Machine height (ft)	18			
Foundation	not needed			
Reversible direction of roller conveyor drive	included			

FLOOR PLAN

